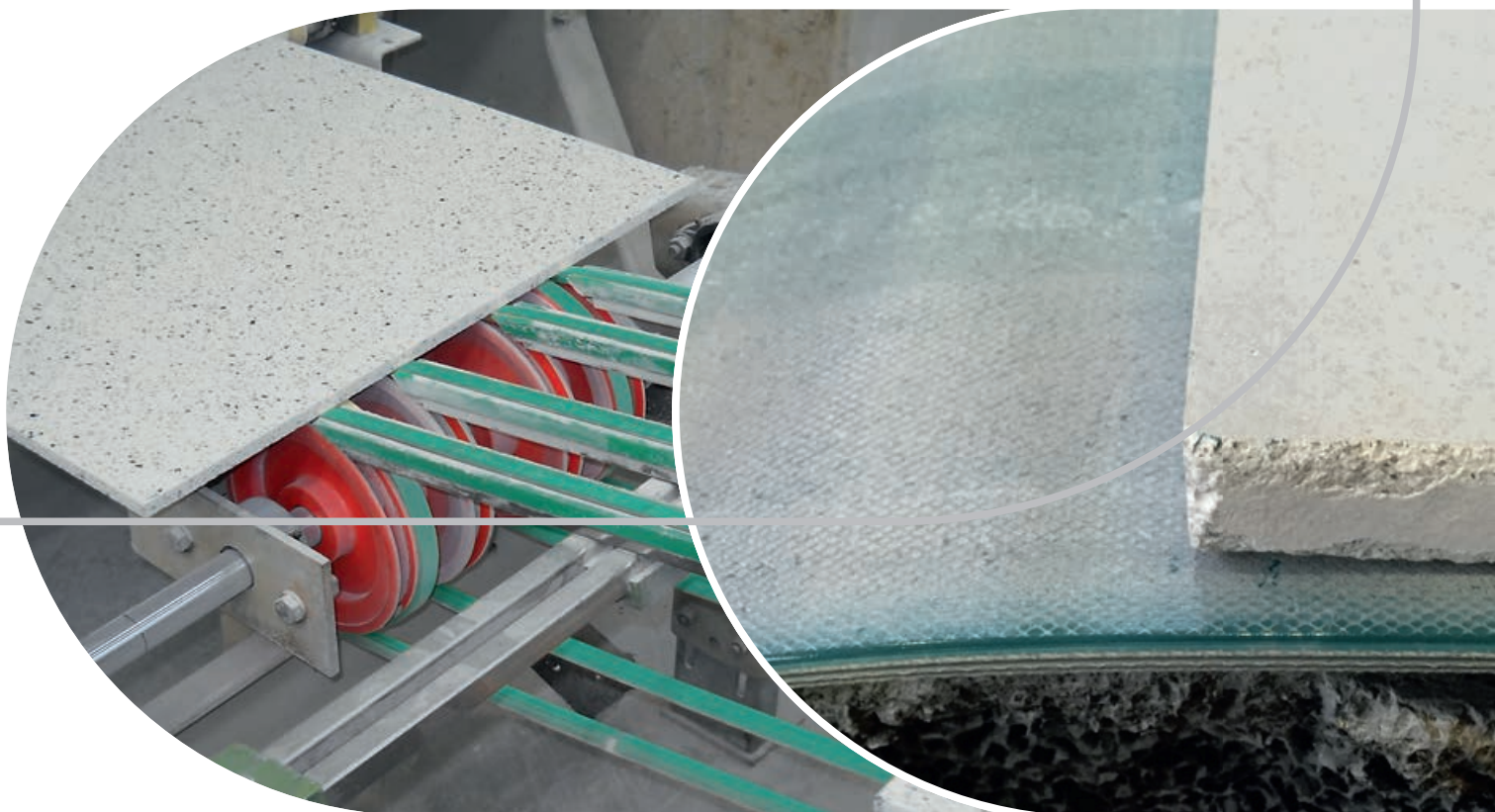


# Marble, Granite and Ceramics Industry



Solutions you can rely on	3
Processing lines	4
Belt range and technical data	5
Application table	6
Features and benefits	7
Solutions in motion	10
Contacts	12



## Competence and experience

Customers in the marble, granite and ceramics industry rely on Habasit's vast belting experience to deliver first-class solutions for their applications. Our wide range of belts and covers allows you to select the optimal combination for your sizing, cutting and polishing needs for all product thicknesses and weights.

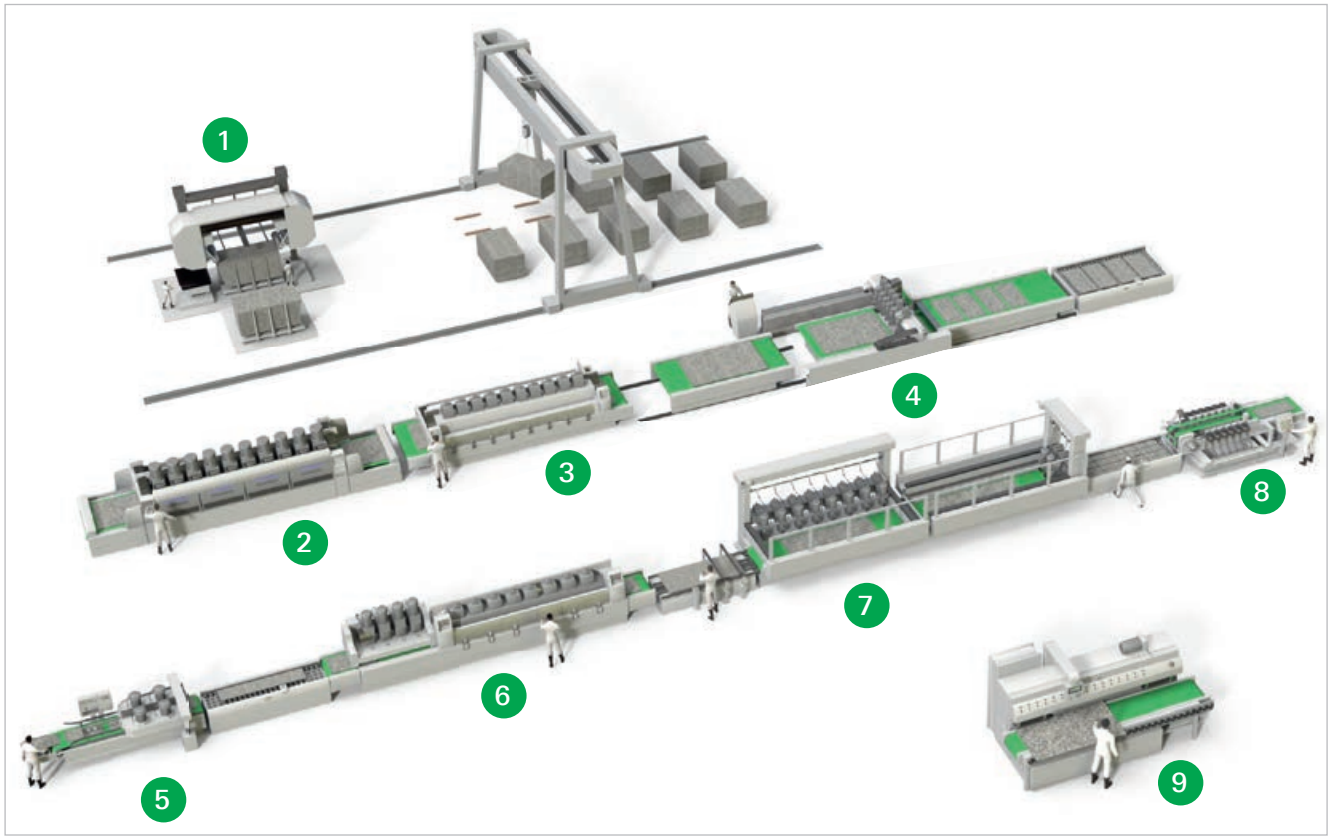
The solid experience in the industry, together with innovative materials, high-performing technical solutions and continuous research, make Habasit belts the benchmark for the industry.

## Belts, the key element for your processing lines

Habasit solutions deliver excellent product adhesion on the belt, higher grip and abrasion resistance. A high and even modulus of elasticity ensures excellent tracking. The belts run smoother and free of elasticity to ensure reliable, high-quality production on your lines. Habasit's research has led to the development of a high-quality joining system that guarantees strength, functionality and durability, while maintaining belt flexibility and homogeneous thickness. The belts can easily be installed on-site at the customer's plant.

The global marble training and competence center located in Verona offers state-of-the-art fabrication and service. Our team is continuously searching for better solutions to meet your most demanding application needs, and trains Habasit technicians to deliver top-quality standards all over the world.





## Marble and granite big slab process

- 1 Block cutting
- 2 Slab calibration
- 3 Slab polishing
- 4 Transversal and longitudinal cutting

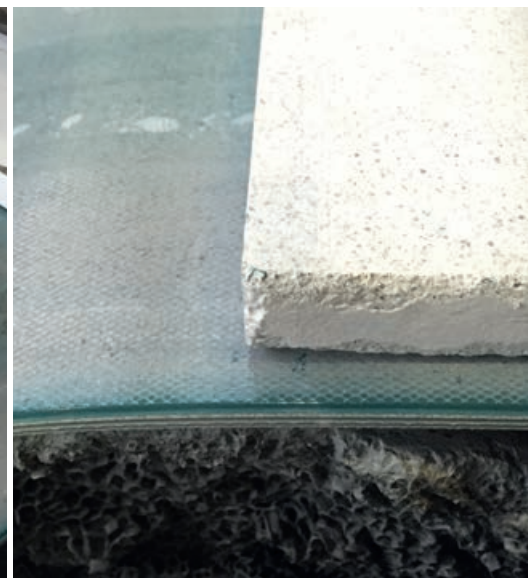
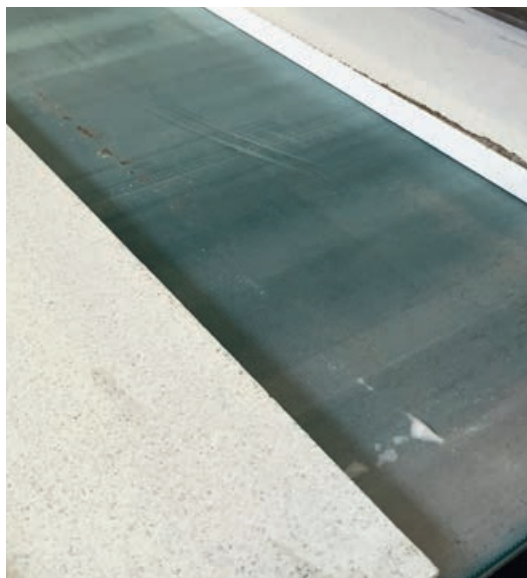
## Marble and granite tiles process

- 5 Splitting
- 6 Calibration and polishing
- 7 Transversal and longitudinal cutting
- 8 Chamfering

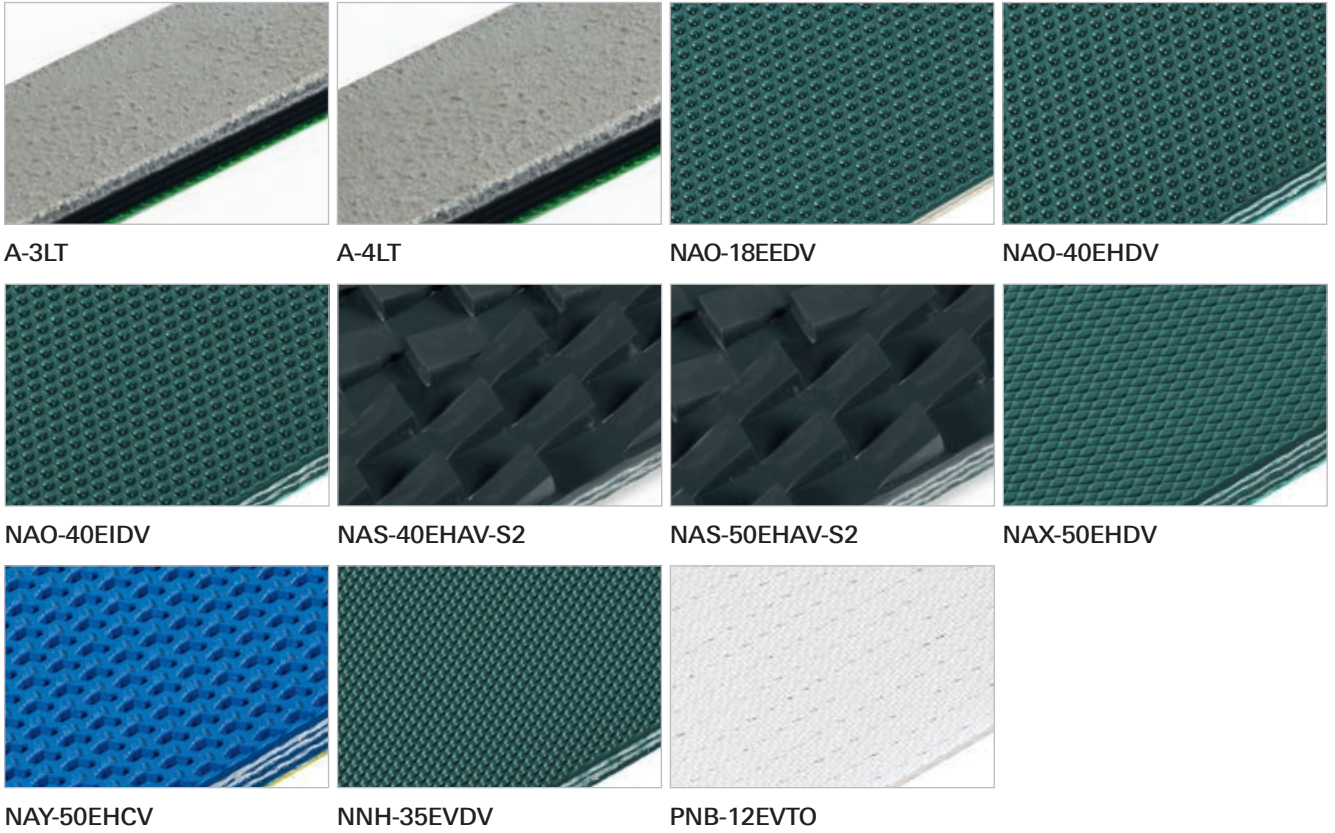
## Finishing process

- 9 Edge polishing

These drawings show schematic examples of selected belt applications and processes only. Those are neither complete nor comprehensive. The actual set-up of a marble and stone processing lines varies by product and original equipment installed.



## Belt range

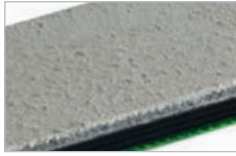


		A-3LT	A-4LT	NAO-18EEDV	NAO-40EHDV	NAO-40EIDV	NAS-40EHAV-S2	NAS-50EHAV-S2	NAX-50EHDV	NAY-50EHCV	NNH-35EVDV	PNB-12EVTO
<b>Technical data</b>												
Material		Leather	Leather	PVC	PVC	PVC	PVC	PVC	PVC	PVC	PVC	TPO
Number of plies		1	1	3	3	3	3	4	4	4	2	2
Thickness	mm	3.1	3.7	4.9	7	6.8	12	13	9	9	5.9	2.5
Admissible tensile force	N/mm	22	39	25	42	42	42	48	48	48	35	16
Tensile force for 1% elongation after relaxation (k1% <sub>relaxed</sub> ) per unit of width (Habasit Standard SOP3-155 / EN ISO 21181)	N/mm	8	18	10	22	22	22	26	26	26	16	7.5
Hardness	Shore A	–	–	70	70	45	50	50	70	45	75	95
Pulley diameter minimum	mm	125	300	120	300	300	300	400	350	350	250	80
Pulley diameter minimum with counter flexion	mm	125	300	150	300	300	300	500	400	400	250	80
Conveying side structure		Rough structure	Rough structure	Orbital	Orbital	Orbital	Double row saw tooth	Double row saw tooth	Snake skin	Y embossing	Honey comb	Smooth
Color		Light gray	Light gray	Dark green	Dark green	Dark green	Anthracite	Anthracite	Dark green	Cobalt blue	Dark green	Transparent

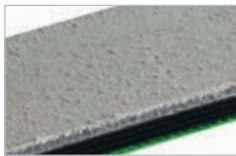
<p>This application/belt matrix does not claim to be complete and serves only as an indication of potential solutions.</p> <p>For detailed material and belt selection, please contact your local Habasit partner or visit: <a href="http://www.habasit.com">www.habasit.com</a></p>	A-3LT	A-4LT	NAO-18EEDV	NAO-40EHDV	NAO-40EIDV	NAS-40EHAV-S2	NAS-50EHAV-S2	NAX-50EHDV	NAY-50EHCV	NNH-35EVDV	PNB-12EVTO
Application											
Block cutting with gangsaw	•	•									
Calibration of big marble and granite slabs				•	•				•		
Calibration and polishing of gres and terrazzo, marble and granite tiles				•				•	•		
Polishing of marble slabs, engineered stone slabs				•	•				•		
Polishing of big granite slabs						•	•				
Edge polishing of marble, engineered stone and granite					•				•		
Splitting machine for marble and granite tiles				•				•			
Chamfering of marble, engineered stone and granite			•		•						
Flaming of marble and granite			•								
Bush hammering of marble and granite			•								
Conveying of engineered stone powders and resins											•
Engineered stone slab forming										•	



## Block cutting with gangsaw



A-3LT



A-4LT

Key features	Your benefits
<ul style="list-style-type: none"> <li>• High performance leather top cover</li> </ul>	<ul style="list-style-type: none"> <li>• Excellent friction on pulley and efficient power transmission</li> <li>• Longer belt service life</li> </ul>
<ul style="list-style-type: none"> <li>• Wear resistance in all production environments</li> </ul>	<ul style="list-style-type: none"> <li>• Smoother and more stable power transmission</li> </ul>
<ul style="list-style-type: none"> <li>• High performance PA element traction</li> </ul>	<ul style="list-style-type: none"> <li>• Higher resistance against weight overload</li> </ul>

## Calibration of big marble and granite slabs



NAO-40EHDV



NAO-40EIDV



NAY-50EHCV

Key features	Your benefits
<ul style="list-style-type: none"> <li>• High and even modulus of elasticity</li> </ul>	<ul style="list-style-type: none"> <li>• Higher resistance against elongation</li> </ul>
<ul style="list-style-type: none"> <li>• High and homogeneous lateral stiffness</li> </ul>	<ul style="list-style-type: none"> <li>• Smoother and more stable belt running</li> </ul>
<ul style="list-style-type: none"> <li>• Low coefficient of friction (running side with impregnated fabric)</li> </ul>	<ul style="list-style-type: none"> <li>• No vibration</li> </ul>
<ul style="list-style-type: none"> <li>• Different cover hardnesses and profile designs in the conveying side structure (orbital and Y)</li> </ul>	<ul style="list-style-type: none"> <li>• Perfect product positioning during the entire production process</li> <li>• Higher product adhesion on the belt surface</li> </ul>
<ul style="list-style-type: none"> <li>• High abrasion and scratch resistance</li> </ul>	<ul style="list-style-type: none"> <li>• Fewer cuts on the belt cover</li> <li>• Longer belt service life</li> </ul>

## Calibration and polishing of gres and terrazzo, marble and granite tiles



NAO-40EHDV



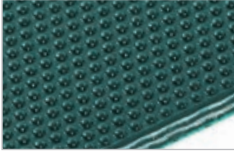
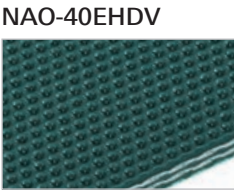
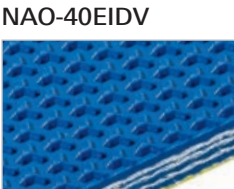
NAX-50EHDV



NAY-50EHCV

Key features	Your benefits
<ul style="list-style-type: none"> <li>• High and even modulus of elasticity</li> </ul>	<ul style="list-style-type: none"> <li>• Used on polishing machines with calibrators and long interaxis</li> <li>• Higher resistance against elongation</li> </ul>
<ul style="list-style-type: none"> <li>• High and homogeneous lateral stiffness</li> </ul>	<ul style="list-style-type: none"> <li>• Smoother and more stable belt running</li> </ul>
<ul style="list-style-type: none"> <li>• Low coefficient of friction (running side with impregnated fabric)</li> </ul>	<ul style="list-style-type: none"> <li>• No vibration</li> </ul>
<ul style="list-style-type: none"> <li>• Different cover hardnesses and profile designs in the conveying side structure (orbital, snake skin and Y)</li> </ul>	<ul style="list-style-type: none"> <li>• Better water outflow</li> </ul>
<ul style="list-style-type: none"> <li>• High abrasion and scratch resistance</li> </ul>	<ul style="list-style-type: none"> <li>• Fewer cuts on the belt cover</li> <li>• Longer belt service life</li> </ul>


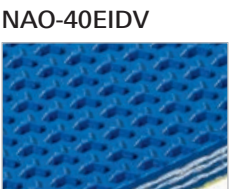
## Polishing of marble slabs, engineered stone slabs

	<b>Key features</b>	<b>Your benefits</b>
	<ul style="list-style-type: none"> <li>• High and even modulus of elasticity</li> <li>• High and homogeneous lateral stiffness</li> </ul>	<ul style="list-style-type: none"> <li>• Higher resistance against elongation</li> <li>• Smoother and more stable belt running</li> </ul>
	<ul style="list-style-type: none"> <li>• Low coefficient of friction (running side with impregnated fabric)</li> <li>• Different cover hardnesses and profile designs in the conveying side structure (orbital and Y)</li> </ul>	<ul style="list-style-type: none"> <li>• No vibration</li> <li>• Higher product adhesion on the belt surface</li> <li>• Perfect product positioning during the entire production process</li> <li>• Better water outflow</li> </ul>
<p>NAY-50EHCV</p>	<ul style="list-style-type: none"> <li>• High strength carcasses with 3 and 4 plies</li> </ul>	<ul style="list-style-type: none"> <li>• Greater quality result in the production process even if running in high speed</li> </ul>

## Polishing of big granite slabs

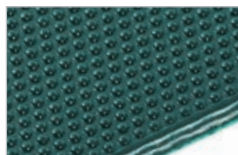
	<b>Key features</b>	<b>Your benefits</b>
	<ul style="list-style-type: none"> <li>• Specific double-row saw-toothed embossing surface design</li> <li>• High and homogeneous lateral stiffness</li> <li>• Surface hardness 50 Shore A</li> </ul>	<ul style="list-style-type: none"> <li>• Perfect product adhesion on the belt surface, also for products with uneven surfaces</li> <li>• More homogeneous processing and slab stability (no rotation)</li> <li>• Smoother and more stable belt running</li> </ul>
<p>NAS-50EHAV-S2</p>	<ul style="list-style-type: none"> <li>• High strength carcasses with 3 and 4 plies</li> </ul>	<ul style="list-style-type: none"> <li>• Perfect product positioning during the entire production process</li> <li>• More homogeneous processing, used on polishing machines with calibrator and long interaxis</li> <li>• Longer belt service life</li> </ul>

## Edge polishing of marble, engineered stone and granite

	<b>Key features</b>	<b>Your benefits</b>
	<ul style="list-style-type: none"> <li>• High and homogeneous lateral stiffness</li> </ul>	<ul style="list-style-type: none"> <li>• Smoother and more stable belt running</li> <li>• No vibration</li> <li>• No mistracking</li> </ul>
<p>NAY-50EHCV</p>	<ul style="list-style-type: none"> <li>• High adhesive top cover</li> <li>• Different cover hardnesses and profile designs in the conveying side structure (orbital and Y)</li> </ul>	<ul style="list-style-type: none"> <li>• Higher product adhesion on the belt surface</li> <li>• Perfect product positioning during the entire production process</li> <li>• Better water outflow</li> </ul>



### Splitting machine for marble and granite tiles



NAO-40EHDV



NAX-50EHDV

#### Key features

- Thick belt covers
- High scratch and abrasion resistance

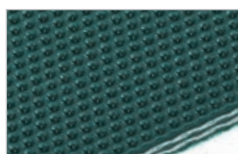
#### Your benefits

- Longer belt service life
- Fewer cuts on the belt cover

### Chamfering of marble, engineered stone and granite



NAO-18EEDV



NAO-40EIDV

#### Key features

- High and even modulus of elasticity
- High adhesive top cover

#### Your benefits

- Higher resistance against elongation
- Smoother and more stable belt running
- No vibration
- Higher product adhesion on the belt surface
- Perfect product positioning during the entire production process

### Flaming and bush hammering of marble and granite



NAO-18EEDV

#### Key features

- High and even modulus of elasticity
- High abrasion and scratch resistance

#### Your benefits

- Higher resistance against elongation
- Longer belt service life

### Conveying of engineered stone powders and resins



PNB-12EVTO

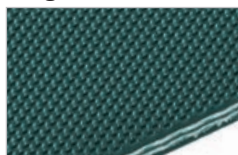
#### Key features

- High-quality belt cover
- Excellent mechanical resistance
- Superior chemical resistance
- High release surface
- Flexproof joining

#### Your benefits

- Higher grip and abrasion resistance
- Longer belt service life
- Safe to clean using aggressive detergents
- Excellent use with sticky products
- Easier installation and replacement

### Engineered stone slab forming



NNH-35EVDV

#### Key features

- High and even modulus of elasticity
- Hard cover with deep impression
- Low coefficient of friction on the running side

#### Your benefits

- Higher resistance against elongation
- Excellent release properties
- No belt sticking effect on the press
- Reduced friction during the process

## Customers first

Your success is our goal. That is why we don't just offer products; we provide solutions. As committed partners to our customers, we are dedicated to sharing our knowledge and providing full support.

Since our founding in 1946, Habasit has been finding ways to meet customer's specific needs in every application. This is what differentiates us as the #1 worldwide belting provider in the industry today.



## Comprehensive consulting and technical support

Profit from the best consulting and technical support in the lightweight belting industry. Local experts are always available to assist you in your belting needs. The Habasit team is proud to provide the highest level of support, together with top-quality products that lead the global market for decades.



## Belt Selection and Calculation Assistance

We are always glad to help you select the most suitable belt for any application for your convenience. We now also provide the free online tool 'SeleCalc' which allows you to easily make selections and calculations yourself. Simply register online at [selecalc.habasit.com](http://selecalc.habasit.com).



## Fabrication, assembly, and local installation services

As a full-service belting provider, we offer joining and assembly services either at our own locations or directly on your equipment.

Habasit has over 30 affiliates worldwide, each with its own inventory, fabrication, assembly and service facilities.

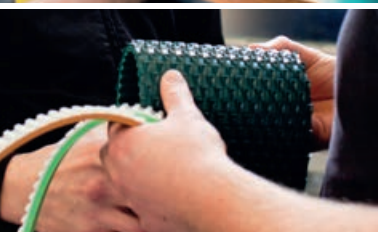


Together with representative offices and numerous qualified distributors, we can react quickly and efficiently to meet all your needs.



## Customer training programs

To ensure the optimal performance and maximum lifespan of all our products, we offer training programs and various support tools. This includes proper procedures for fabrication, installation, assembly, maintenance and belt repair, all of which takes place at a Habasit site or at your location.



## Belt monitoring, inspections, analyses, and process optimization proposals

We organize and handle belt maintenance, inspections, analyses and surveys at customer's sites. Upon request, we are ready to develop optimization proposals to ensure you're getting maximum value from your machinery and process output.



## Design assistance for customized solutions

Habasit believes in building partnerships with our customers. Our engineering team will work closely with your engineers on joint design developments from initial design to final implementation. This expert service can be invaluable for projects involving new technologies or large-scale modifications and adaptations.



**Committed to innovation**

Because our customers' belting challenges and needs are always changing, we consistently invest a substantial amount of labor and resources into the research and development of new products and solutions.

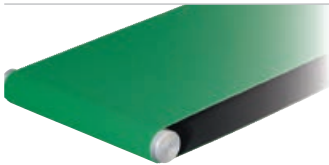
**Certified for quality**

We deliver the highest quality standards not only in our products and solutions, but also in our employees' daily work processes. Habasit AG is certified according to ISO 9001:2008.



**Worldwide leading product range**

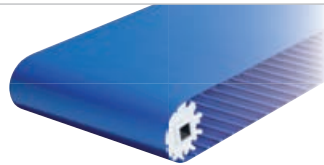
Habasit offers the largest selection of belting, conveying, processing and complementary products in the industry. Our response to any request is nothing less than a specific, tailor-made solution.



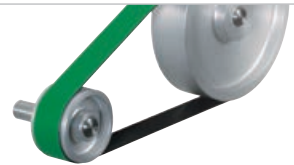
**HabaFLOW®**  
Fabric-based conveyor and processing belts



**HabasitLINK®**  
Plastic modular belts



**Habasit Cleandrive™**  
Monolithic reinforced conveyor belts



**HabaDRIVE®**  
Power transmission belts



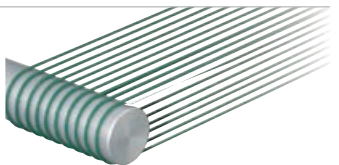
**HabaSYNC®**  
Timing belts



**HabasitCHAIN®**  
Chains (slat and conveyor chains)



Machine tapes



Round belts



Seamless belts



**HabiPLAST®**  
Profiles, Guides, Wear strips



**Accessories**  
(sprockets, flights, welding profiles, etc.)



**Fabrication tools**  
(joining, cutting & preparing devices)

**EMEA**

**Germany**

Habasit GmbH, Eppertshausen  
Phone: +49 6071 969 0  
www.habasit.de

**Switzerland**

Habasit GmbH, Reinach  
Phone: +41 61 577 51 00  
www.habasit.ch

**Austria**

Habasit GmbH, Vienna  
Phone: +43 1 690 66  
www.habasit.at

**Italy**

Habasit Italiana SpA  
Customer Care: 199 199 333  
for int. calls: +39 0438 911444  
www.habasit.it

**France**

Habasit France S.A.S., Mulhouse  
Phone: +33 389 338 903  
www.habasit.fr

**Spain**

Habasit Hispánica S.A.  
Barberá del Vallés  
Phone: +34 937 191 912  
www.habasit.es

**United Kingdom & Ireland**

Habasit UK Ltd., Elland  
Phone: +44 333 207 6570  
www.habasit.co.uk

**Netherlands**

Habasit Netherlands BV, Nijkerk  
Phone: +31 332 472 030  
www.habasit.nl

**Belgium & Luxembourg**

Habasit Belgium N.V., Zaventem  
Phone: +32 27 250 430  
www.habasit.be | habasit.lu

**Turkey**

Habasit Kayis San.  
Ve Tic. Ltd. Sti., Istanbul  
Phone: +90 444 70 43  
www.habasit.com.tr

**Nordic countries**

Habasit AB, Hindas, Sweden  
Phone: +46 301 226 00  
www.habasit.se

**Poland**

Habasit Polska Sp. z o.o.  
Dąbrowa Górnicza  
Phone: +48 32 639 02 40  
www.habasit.pl

**Russia**

OOO Habasit Ltd.  
Moscow Region  
Phone: +7 495 966 1566  
www.habasit.ru

**Ukraine**

Habasit Ukraine LLC., Vinnytsa  
Phone: +38 044 290 88 99  
www.habasit.ua

**South Africa**

Habasit South Africa Pty Ltd.  
Gauteng  
Phone: +27 10 001 6770  
www.habasit.co.za

**APAC**

**Japan**

Habasit Nippon Co., Ltd.  
Yokohama  
Phone: +81 45 476 0371  
www.habasit.co.jp

**China**

Habasit East Asia Ltd.  
Fotan, Shatin, N.T., Hong Kong  
Phone: +852 2145 0150  
www.habasit.com.hk

Habasit (Shanghai) Co. Ltd.

Shanghai  
Phone: +8621 2281 6131  
Phone: +8621 5488 1218  
www.habasit.com.hk

**Taiwan**

Habasit (Taiwan) Ltd.  
New Taipei City  
Phone: +886 2 2267 0538  
www.habasit.com.tw

**India**

Habasit India, Coimbatore  
Phone: +91 422 262 78 79  
www.habasit.in

**Singapore**

Habasit Far East Pte Ltd.  
Singapore  
Phone: +65 6862 5566  
www.habasit.com.sg

**Australia**

Habasit Australia Pty Ltd.  
Silverwater, Sydney  
Phone: +61 1300 945 455  
www.habasit.com.au

**New Zealand**

Habasit New Zealand Pty Ltd.  
Auckland  
Phone: 0800 000 070  
www.habasit.co.nz

**AMERICAS**

**USA**

Habasit America  
Suwanee, Georgia  
Phone: +1 800 458 6431  
www.habasitamerica.com

**Canada**

Habasit Canada Ltd., Oakville  
Phone: +1 905 827 41 31  
www.habasit.ca

**Mexico**

Habasit Rocua, Zapopan  
Phone: +52 33 3824 2358  
www.habasitrocua.mx

**Habasit AG**

Römerstrasse 1  
CH-4153 Reinach, Switzerland  
Phone +41 61 715 15 15  
Fax +41 61 715 15 55  
E-mail info@habasit.com  
www.habasit.com

Registered trademarks  
Copyright Habasit AG  
Subject to alterations  
Printed in Poland  
Publication data:  
2174FLY.SMC-en0816HOR

This **disclaimer** is made by and on behalf of Habasit and its affiliated companies, directors, employees, agents and contractors (hereinafter collectively "HABASIT") with respect to the products referred to herein (the "Products").

**SAFETY WARNINGS SHOULD BE READ CAREFULLY AND ANY RECOMMENDED SAFETY PRECAUTIONS BE FOLLOWED STRICTLY!** Please refer to the Safety Warnings herein, in the Habasit catalogue as well as installation and operating manuals.

All indications / information as to the application, use and performance of the Products are recommendations provided with due diligence and care, but no representations or warranties of any kind are made as to their completeness, accuracy or suitability for a particular purpose. The data provided herein are based on laboratory application with small-scale test equipment, running at standard conditions, and do not necessarily match product performance in industrial use. New knowledge and experience may lead to re-assessments and modifications within a short period of time and without prior notice.

EXCEPT AS EXPLICITLY WARRANTED BY HABASIT, WHICH WARRANTIES ARE EXCLUSIVE AND IN LIEU OF ALL OTHER WARRANTIES, EXPRESS OR IMPLIED, THE PRODUCTS ARE PROVIDED "AS IS". HABASIT DISCLAIMS ALL OTHER WARRANTIES, EITHER EXPRESS OR IMPLIED, INCLUDING, BUT NOT LIMITED TO, IMPLIED WARRANTIES OF MERCHANTABILITY, FITNESS FOR A PARTICULAR PURPOSE, NON-INFRINGEMENT, OR ARISING FROM A COURSE OF DEALING, USAGE, OR TRADE PRACTICE, ALL OF WHICH ARE HEREBY EXCLUDED TO THE EXTENT ALLOWED BY APPLICABLE LAW. BECAUSE CONDITIONS OF USE IN INDUSTRIAL APPLICATION ARE OUTSIDE OF HABASIT'S CONTROL, HABASIT DOES NOT ASSUME ANY LIABILITY CONCERNING THE SUITABILITY AND PROCESS ABILITY OF THE PRODUCTS, INCLUDING INDICATIONS ON PROCESS RESULTS AND OUTPUT.