

*fit  
range*





# Index

---

## Serie 50000

Push-In Fittings

p. 4



---

## Serie 55000

Technopolymeric Push-In Fittings

p. 7



---

## Serie 57000

Metallic Push-In Fittings

p. 11



---

## Serie 40000V

Metallic Push-In Fittings  
with FKM seal

p. 14



---

## Serie 58000

High pressure Push-In fittings

p. 25



---

## Serie 1000

Push-On Fittings

p. 26



---

## Serie Function

Function Fittings

p. 29



---

## Serie Ghilux

Ball Valves

p. 37



**Serie Foods & Drinks**

Food Grade Push-In fitting for drinking water NSF/ANSI 51-61-372 conformed

p. 16



**Serie 70000**

Food Grade Push-In Fittings

p. 17



**Serie Inox**

Push-In Fittings, Push-On Fittings, Quick Couplings, Adapters, Ball Valve and Function Fittings

p. 18



**Serie 89000**

Metallic Push-In Fittings for Inch Tube

p. 23



**Serie Adaptors**

Nickel-Plated Brass adaptors

p. 41



**Serie Tubes**

Plastic Tubes

p. 46



**Serie Quick Couplings**

Quick Couplings and Blow Guns

p. 50



**Serie Compression Fittings**

Compression Fittings, Double Cone Fittings and Universal Fittings

p. 69



Excellent solutions in Fluidtechnology

[www.aignep.com](http://www.aignep.com)



# Serie 50000

PUSH-IN FITTINGS



### Application

- Pneumatic Automation
- Automotive
- Textile, Packaging
- Compressed Air Circuit
- Vacuum



### Component Parts and Materials

- Nickel-plated brass Body
- Acetalic resin Collet
- Steel AISI 301 Clamping washer
- NBR seal



### Pressures

- 0.99 bar (-0.099 MPa)  
20 bar (2.0 MPa)



### Temperatures

- 20 °C  
+ 80 °C



### Fluids

- Compressed air
- Vacuum



### Connection Tubes

Plastic tubes:  
PA6, PA11, PA12, Polyethylene, \*Polyurethane, PTFE, FEP.  
*\*For Polyurethane hoses it is required a minimum hardness of 98 shore.*



### Threads

- "UNIVERSAL SHORT" Tapered thread.
- Tapered gas in conformity with ISO7.1, BS 21, DIN 2999.
- Parallel gas in conformity with ISO 228 Class A.
- Metric in conformity with ISO R/262.



### Reference Standard

1907/2006 REACH ✓

2011/65/CE RoHS ✓

97/23/CE (PED)

ISO 14743:2004

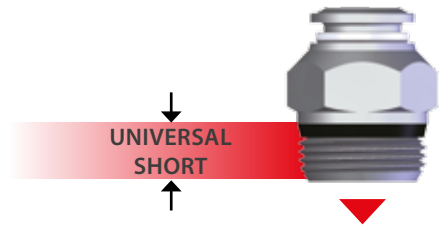
SILICON FREE



### UNIVERSAL SHORT

The "UNIVERSAL SHORT" taper thread has been designed to offer the following advantages to the users:

- reduced overall length;
- smaller hex dimensions compared to the parallel threads;
- to allow the assembly with different female threads both taper as well as parallel.



NPT NPTF	ISO 7 BSPP	ISO 7 BSPT PT	ISO 228 BSP PF
Tapered	Parallell	Tapered	Parallell

To ensure the right tightening also with surfaces not perfectly flat, without spot-facing, concave convex and with different kinds of chamfers or radius.



**50000**  
STRAIGHT MALE ADAPTOR "UNIVERSAL SHORT"



4 - 1/8	6 - 1/2	10 - 1/2
4 - 1/4	8 - 1/8	12 - 1/4
5 - 1/8	8 - 1/4	12 - 3/8
5 - 1/4	8 - 3/8	12 - 1/2
6 - 1/8	8 - 1/2	14 - 3/8
6 - 1/4	10 - 1/4	14 - 1/2
6 - 3/8	10 - 3/8	

**50010**  
STRAIGHT MALE ADAPTOR WITH EXAGON EMBEDDED



3 - M5	4 - M7x1	6 - 1/4
4 - M5	6 - M5	8 - 1/8
4 - 1/8	6 - 1/8	8 - 1/4

**50020**  
STRAIGHT MALE ADAPTOR (PARALLEL)



3 - M5	6 - 1/4	12 - 1/4
4 - M3	6 - 3/8	12 - 3/8
4 - M5	6 - 1/2	12 - 1/2
4 - 1/8	8 - 1/8	14 - 3/8
4 - 1/4	8 - 1/4	14 - 1/2
5 - M5	8 - 3/8	6 - M12x1
5 - 1/8	8 - 1/2	6 - M12x1.25
5 - 1/4	10 - 1/4	6 - M12x1.5
6 - M5	10 - 3/8	8 - M12x1.5
6 - 1/8	10 - 1/2	

**50030**  
STRAIGHT FEMALE ADAPTOR



3 - M5	6 - 1/8	10 - 1/4
4 - M5	6 - 1/4	10 - 3/8
4 - 1/8	8 - 1/8	10 - 1/2
4 - 1/4	8 - 1/4	12 - 3/8
5 - 1/8	8 - 3/8	12 - 1/2

**50040**  
STRAIGHT CONNECTOR



3	6	10
4	8 - 6	12 - 10
5	8	12
6 - 4	10 - 8	14

**50050**  
BULKHEAD CONNECTOR



3	6	12
4	8	14
5	10	

**50100**  
ELBOW MALE ADAPTOR (TAPER)



4 - M5	6 - 1/8	10 - 1/4
4 - 1/8	6 - 1/4	10 - 3/8
5 - M5	8 - 1/8	12 - 1/4
5 - 1/8	8 - 1/4	12 - 3/8

**50106**  
ORIENTING ELBOW FEMALE ADAPTOR



4 - 1/8	8 - 1/8
4 - 1/4	8 - 1/4
6 - 1/8	8 - 3/8
6 - 1/4	

**50111**  
ORIENTING ELBOW MALE ADAPTOR "UNIVERSAL SHORT"



4 - 1/8	8 - 1/4	12 - 3/8
4 - 1/4	8 - 3/8	12 - 1/2
5 - 1/8	8 - 1/2	14 - 3/8
6 - 1/8	10 - 1/4	14 - 1/2
6 - 1/4	10 - 3/8	
8 - 1/8	10 - 1/2	

**50116**  
ORIENTING ELBOW MALE ADAPTOR (PARALLEL)



3 - M5	8 - 1/8	12 - 1/2
4 - M5	8 - 1/4	14 - 3/8
4 - 1/8	8 - 3/8	14 - 1/2
4 - 1/4	8 - 1/2	6 - M12x1
5 - M5	10 - 1/4	6 - M12x1.25
5 - 1/8	10 - 3/8	6 - M12x1.5
6 - M5	10 - 1/2	8 - M12x1.5
6 - 1/8	12 - 1/4	
6 - 1/4	12 - 3/8	

**50121**  
EXTENDED ORIENTING ELBOW MALE ADAPTOR "UNIVERSAL SHORT"



4 - 1/8	6 - 1/4	10 - 1/4
4 - 1/4	8 - 1/8	10 - 3/8
5 - 1/8	8 - 1/4	
6 - 1/8	8 - 3/8	

**50126**  
EXTENDED ORIENTING ELBOW MALE ADAPTOR (PARALLEL)



4 - 1/8	6 - 1/4	10 - 1/4
4 - 1/4	8 - 1/8	10 - 3/8
5 - 1/8	8 - 1/4	
6 - 1/8	8 - 3/8	

**50130**  
ELBOW CONNECTOR



3	6	12
4	8	14
5	10	

**50200**  
TEE MALE ADAPTOR (TAPER) - CENTRE LEG



4 - M5	8 - 1/8	12 - 1/4
4 - 1/8	8 - 1/4	12 - 3/8
5 - 1/8	10 - 1/4	
6 - 1/8	10 - 3/8	

**50211**  
ORIENTING TEE MALE ADAPTOR "UNIVERSAL SHORT" - CENTRE LEG



4 - 1/8	8 - 1/4	12 - 3/8
4 - 1/4	8 - 3/8	12 - 1/2
5 - 1/8	8 - 1/2	14 - 3/8
6 - 1/8	10 - 1/4	14 - 1/2
6 - 1/4	10 - 3/8	
8 - 1/8	10 - 1/2	

**50216**  
ORIENTING TEE MALE ADAPTOR (PARALLEL) - CENTRE LEG



3 - M5	6 - 1/4	12 - 3/8
4 - M5	8 - 1/8	12 - 1/2
4 - 1/8	8 - 1/4	14 - 3/8
4 - 1/4	8 - 3/8	14 - 1/2
5 - M5	8 - 1/2	6 - M12x1
5 - 1/8	10 - 1/4	6 - M12x1.25
6 - M5	10 - 3/8	6 - M12x1.5
6 - 1/8	10 - 1/2	

**50223**  
ORIENTING TEE MALE ADAPTOR "UNIVERSAL SHORT" OFF - SET LEG



4 - 1/8	8 - 1/8	10 - 3/8
4 - 1/4	8 - 1/4	10 - 1/2
5 - 1/8	8 - 3/8	12 - 3/8
6 - 1/8	8 - 1/2	12 - 1/2
6 - 1/4	10 - 1/4	

**50226**  
ORIENTING TEE MALE ADAPTOR (PARALLEL) OFF - SET LEG



3 - M5	6 - 1/8	10 - 3/8
4 - M5	6 - 1/4	10 - 1/2
4 - 1/8	8 - 1/8	12 - 3/8
4 - 1/4	8 - 1/4	12 - 1/2
5 - M5	8 - 3/8	6 - M12x1
5 - 1/8	8 - 1/2	6 - M12x1.25
6 - M5	10 - 1/4	6 - M12x1.5

**50230**  
TEE CONNECTOR



3	6	12
4	8	14
5	10	

**50310**  
Y CONNECTOR



3	5	8
4	6	10

**50500**  
SINGLE BANJO BODY



3 - M5	5 - 1/8	8 - 1/4
3 - M6	5 - 1/4	8 - 3/8
4 - M5	6 - M5	10 - 1/4
4 - M6	6 - M6	10 - 3/8
4 - 1/8	6 - 1/8	12 - 3/8
5 - M5	6 - 1/4	12 - 1/2
5 - M6	8 - 1/8	14 - 1/2

**50510**  
DOUBLE BANJO BODY



4 - M5	5 - 1/8	6 - 1/4
4 - M6	5 - 1/4	8 - 1/8
4 - 1/8	6 - 1/8	8 - 1/4

**50550**  
ORIENTING SINGLE BANJO BODY MALE



4 - 1/8	6 - 1/4
5 - 1/8	8 - 1/8
5 - 1/4	8 - 1/4
6 - 1/8	

**50560**  
ORIENTING DOUBLE BANJO BODY MALE



4 - 1/8	6 - 1/4
5 - 1/8	8 - 1/8
5 - 1/4	8 - 1/4
6 - 1/8	

**51410**  
BANJO STEM SINGLE



M5	3/8
M6	1/2
1/8	M12x1.5
1/4	

**51420**  
BANJO STEM DOUBLE



1/8	1/2
1/4	M12x1.5
3/8	

**51430**  
BANJO STEM TRIPLE



1/8
1/4
3/8
1/2

**51440**  
MALE - FEMALE BANJO STEM SINGLE



1/8 - 1/8
1/4 - 1/4
3/8 - 3/8

**50600**  
MALE ADAPTOR PARALLEL



4 - M5	6 - 1/8	10 - 1/4
4 - 1/8	6 - 1/4	10 - 3/8
5 - M5	8 - 1/8	12 - 1/4
5 - 1/8	8 - 1/4	12 - 3/8
5 - 1/4	8 - 3/8	14 - 1/2
6 - M5	10 - 1/8	

**50610**  
POLYAMIDE PLUG



3	6	12
4	8	14
5	10	

**50625**  
DOUBLE JOINT



4	8
5	10
6	12

**50700**  
REDUCER



4 - 3	8 - 4	10 - 8
5 - 4	8 - 6	12 - 8
6 - 4	10 - 4	12 - 10
6 - 5	10 - 6	

**55800**  
PUSH-FIT CARTRIDGES



3	8
4	10
5	12
6	

**55801**  
TOOL FOR PUSH-FIT CARTRIDGES SEAT



3	8
4	10
5	12
6	

**55802**  
ASSEMBLING TOOL FOR PUSH-FIT CARTRIDGES



3	8
4	10
5	12
6	

**50900**  
ALUMINIUM MANIFOLD 5 WAYS



4 - 1/8
6 - 1/8
6 - 1/4
8 - 1/4

**50980**  
SECURITY CLIPS



4 - (5/32)	10 - (3/8)
5	12 - (1/2)
6 - (1/4)	14
8 - (5/16)	

**50990**  
TOOL FOR DISASSEMBLING



**50006**  
THREAD PACKING FOR THE "UNIVERSAL SHORT" TAPER THREADS



1/8
1/4
3/8
1/2





# Serie 55000

## TECHNOPOLYMERIC PUSH-IN FITTING



### Application

- Robotics
- Automotive
- Textile, Packaging, Handling
- Compressed Air Circuit
- Industrial Water
- Vacuum



### Reference Standard

1907/2006  
REACH ✓

2011/65/CE  
RoHS ✓

97/23/CE  
(PED)

ISO  
14743:2004

SILICON  
FREE



### Component Parts and Materials

- Nickel-plated brass Body
- Acetalic resin Collet
- Steel AISI 301 Clamping washer
- Technopolymeric Body
- NBR seal



### Connection Tubes

Plastic tubes:

PA6, PA11, PA12, Polyethylene, \*Polyurethane, PTFE, FEP.

*\*For Polyurethane hoses it is required a minimum hardness of 98 shore.*



### Pressures

- 0.99 bar (-0.099 MPa)  
20 bar (2.0 MPa)



### Threads

- "UNIVERSAL SHORT" Tapered thread (See p.18).
- Tapered gas in conformity with ISO7.1, BS 21, DIN 2999.
- Parallel gas in conformity with ISO 228 Class A.
- Metric in conformity with ISO R/262.



### Temperatures

- 20 °C  
+ 80 °C



### Fluids

- Compressed air
- Vacuum
- Water

LEGEND



Screwdriver regulation



Manual regulation

#### 55000 STRAIGHT MALE ADAPTOR "UNIVERSAL SHORT"



4 - 1/8	8 - 1/8	12 - 3/8
4 - 1/4	8 - 1/4	12 - 1/2
5 - 1/8	8 - 3/8	14 - 3/8
5 - 1/4	8 - 1/2	14 - 1/2
6 - 1/8	10 - 1/4	
6 - 1/4	10 - 3/8	
6 - 3/8	10 - 1/2	
6 - 1/2	12 - 1/4	

#### 55010 STRAIGHT MALE ADAPTOR WITH EXAGON EMBEDDED



4 - 1/8	8 - 1/8
6 - 1/8	8 - 1/4
6 - 1/4	

#### 50010N STRAIGHT MALE ADAPTOR (PARALLEL) WITH EXAGON EMBEDDED



3 - M5
4 - M5
4 - M7x1
6 - M5

#### 50020N STRAIGHT MALE ADAPTOR (PARALLEL)



4 - M3	6 - 3/8	12 - 3/8
4 - M5	6 - 1/2	12 - 1/2
4 - 1/8	8 - 1/8	14 - 3/8
4 - 1/4	8 - 1/4	14 - 1/2
5 - M5	8 - 3/8	6 - M12x1
5 - 1/8	8 - 1/2	6 - M12x1.25
5 - 1/4	10 - 1/4	6 - M12x1.5
6 - M5	10 - 3/8	8 - M12x1.5
6 - 1/8	10 - 1/2	
6 - 1/4	12 - 1/4	

**50030N**  
STRAIGHT FEMALE ADAPTOR



4 - M5	6 - 1/4	10 - 3/8
4 - 1/8	8 - 1/8	10 - 1/2
4 - 1/4	8 - 1/4	12 - 3/8
5 - 1/8	8 - 3/8	12 - 1/2
6 - 1/8	10 - 1/4	

**55040**  
STRAIGHT CONNECTOR



4	8 - 4	12
5	8 - 6	12 - 8
6	10	12 - 10
6 - 4	10 - 6	14
8	10 - 8	14 - 12

**50050N**  
BULKHEAD CONNECTOR



3 - M10x1	6 - M14x1	12 - M22x1
4 - M12x1	8 - M16x1	14 - M23x1
5 - M14x1	10 - M20x1	

**55111**  
ORIENTING ELBOW MALE ADAPTOR  
"UNIVERSAL SHORT"



4 - 1/8	8 - 1/8	12 - 1/4
4 - 1/4	8 - 1/4	12 - 3/8
5 - 1/8	8 - 3/8	12 - 1/2
6 - 1/8	8 - 1/2	14 - 3/8
6 - 1/4	10 - 1/4	14 - 1/2
6 - 3/8	10 - 3/8	
6 - 1/2	10 - 1/2	

**55116**  
ORIENTING ELBOW MALE ADAPTOR  
(PARALLEL)



4 - M3x0.5	6 - 1/8	10 - 1/4
4 - M5	6 - 1/4	10 - 3/8
4 - M7x1	6 - 3/8	10 - 1/2
4 - 1/8	6 - 1/2	12 - 1/4
4 - 1/4	8 - 1/8	12 - 3/8
5 - M5	8 - 1/4	12 - 1/2
5 - 1/8	8 - 3/8	14 - 3/8
6 - M5	8 - 1/2	14 - 1/2

**55126**  
EXTENDED ORIENTING ELBOW MALE  
ADAPTOR (PARALLEL)



4 - M5	6 - 1/8
4 - 1/8	8 - 1/8
6 - M5	8 - 1/4

**55130**  
ELBOW CONNECTOR



4 - 4	8 - 8	12 - 10
5 - 5	10 - 6	12 - 12
6 - 6	10 - 8	14 - 14
8 - 6	10 - 10	

**55140**  
ORIENTING ELBOW



4 - 4	6 - 8	10 - 12
4 - 6	8 - 8	12 - 12
6 - 6	8 - 10	
6 - 4	10 - 10	

**55150**  
ORIENTING ELBOW



4 - 4	6 - 4	10 - 10
4 - 6	8 - 8	10 - 12
6 - 6	8 - 10	12 - 12

**55160**  
45° ORIENTING ELBOW



4 - 4	10 - 10
6 - 6	12 - 12
8 - 8	

**55170**  
45° ORIENTING ELBOW MALE ADAPTOR  
"UNIVERSAL SHORT"



4 - 1/8	8 - 1/4	10 - 1/2
6 - 1/8	8 - 3/8	12 - 1/4
6 - 1/4	10 - 1/4	12 - 3/8
8 - 1/8	10 - 3/8	12 - 1/2

**55175**  
45° ORIENTING ELBOW MALE ADAPTOR  
(PARALLEL)



4 - M5	8 - 1/8	10 - 1/2
4 - 1/8	8 - 1/4	12 - 1/4
6 - M5	8 - 3/8	12 - 3/8
6 - 1/8	10 - 1/4	12 - 1/2
6 - 1/4	10 - 3/8	

**55180**  
45° ELBOW CONNECTOR



4
6
8
10
12

**55211**  
ORIENTING TEE MALE ADAPTOR  
"UNIVERSAL SHORT" - CENTRE LEG



4 - 1/8	8 - 1/4	12 - 3/8
4 - 1/4	8 - 3/8	12 - 1/2
5 - 1/8	10 - 1/4	14 - 3/8
6 - 1/8	10 - 3/8	14 - 1/2
6 - 1/4	10 - 1/2	
8 - 1/8	12 - 1/4	

**55216**  
ORIENTING TEE MALE ADAPTOR (PARALLEL)  
CENTRE LEG



4 - M5	6 - 1/4	12 - 1/4
4 - 1/8	8 - 1/8	12 - 3/8
4 - 1/4	8 - 1/4	12 - 1/2
5 - M5	8 - 3/8	14 - 3/8
5 - 1/8	10 - 1/4	14 - 1/2
6 - M5	10 - 3/8	
6 - 1/8	10 - 1/2	

**55223**  
ORIENTING TEE MALE ADAPTOR  
"UNIVERSAL SHORT" OFF - SET LEG



4 - 1/8	8 - 1/4	12 - 3/8
4 - 1/4	8 - 3/8	12 - 1/2
5 - 1/8	10 - 1/4	14 - 3/8
6 - 1/8	10 - 3/8	14 - 1/2
6 - 1/4	10 - 1/2	
8 - 1/8	12 - 1/4	

**55226**  
ORIENTING TEE MALE ADAPTOR (PARALLEL)  
OFF - SET LEG



4 - M5	6 - 1/4	12 - 1/4
4 - 1/8	8 - 1/8	12 - 3/8
4 - 1/4	8 - 1/4	12 - 1/2
5 - M5	8 - 3/8	14 - 3/8
5 - 1/8	10 - 1/4	14 - 1/2
6 - M5	10 - 3/8	
6 - 1/8	10 - 1/2	

**55230**  
TEE CONNECTOR



4	8-10-8	14
5	10	14-8-14
6	10-8-10	14-10-14
6-4-6	10-12-10	14-12-14
8	12	
8-6-8	12-10-12	

**55235**  
PLUG-IN EQUAL RUN TEE

**New**



4 - 4 - 4	10 - 10 - 10	6 - 8 - 8
6 - 6 - 6	12 - 12 - 12	8 - 10 - 10
8 - 8 - 8	4 - 6 - 6	10 - 12 - 12

**55237**  
PLUG-IN EQUAL CENTRE TEE

**New**



6 - 4
8 - 6
10 - 8
12 - 10

**55240**  
ORIENTING TEE



4 - 4	6 - 4	10 - 10
4 - 6	8 - 8	10 - 12
6 - 6	8 - 10	12 - 12

**55310**  
Y CONNECTOR



4 - 4	8 - 8	10 - 8
6 - 6	8 - 6	12 - 12
6 - 4	10 - 10	12 - 8

**55315**  
PLUG-IN Y CONNECTOR

**New**



4 - 4	8 - 6	10 - 10
6 - 4	8 - 8	12 - 12
6 - 6	10 - 8	

**55320**  
ORIENTING Y MALE ADAPTOR "UNIVERSAL SHORT"



4 - 1/8	8 - 1/8	10 - 3/8
4 - 1/4	8 - 1/4	10 - 1/2
6 - 1/8	8 - 3/8	12 - 3/8
6 - 1/4	10 - 1/4	12 - 1/2

**55325**  
ORIENTING Y MALE ADAPTOR (PARALLEL)



4 - M5	6 - 1/4	10 - 3/8
4 - 1/8	8 - 1/8	10 - 1/2
4 - 1/4	8 - 1/4	12 - 3/8
6 - M5	8 - 3/8	12 - 1/2
6 - 1/8	10 - 1/4	

**55330**  
Y CONNECTOR MANIFOLD



4 - 4
4 - 6
6 - 6
6 - 8

**55340**  
Y CONNECTOR ORIENTING MALE ADAPTOR "UNIVERSAL SHORT"



4 - 1/8
4 - 1/4
6 - 1/8
6 - 1/4

**55345**  
Y CONNECTOR ORIENTING MALE ADAPTOR (PARALLEL)



4 - 1/8
4 - 1/4
6 - 1/8
6 - 1/4

**55350**  
REDUCTION MANIFOLD



6 - 4	10 - 6
8 - 4	10 - 8
8 - 6	

**55360**  
REDUCTION MANIFOLD ORIENTING MALE ADAPTOR "UNIVERSAL SHORT"



6-4 - 1/8	8-6 - 1/8	10-8 - 1/4
6-4 - 1/4	8-6 - 1/4	10-8 - 3/8
8-4 - 1/8	10-6 - 1/4	
8-4 - 1/4	10-6 - 3/8	

**55365**  
REDUCTION MANIFOLD ORIENTING MALE ADAPTOR (PARALLEL)



6-4 - 1/8	8-6 - 1/8	10-8 - 1/4
6-4 - 1/4	8-6 - 1/4	10-8 - 3/8
8-4 - 1/8	10-6 - 1/4	
8-4 - 1/4	10-6 - 3/8	

**55500**  
SINGLE BANJO BODY



4 - M5	5 - 1/4	8 - 1/4
4 - M6	6 - M5	8 - 3/8
4 - 1/8	6 - M6	10 - 3/8
5 - M5	6 - 1/8	12 - 3/8
5 - M6	6 - 1/4	12 - 1/2
5 - 1/8	8 - 1/8	

**55510**  
DOUBLE BANJO BODY



4 - M5	5 - 1/4	8 - 1/8
4 - 1/8	6 - 1/8	8 - 1/4
5 - 1/8	6 - 1/4	

**55520**  
DOUBLE BANJO BODY

**New**



4 - 1/8	6 - 1/4	8 - 3/8
4 - 1/4	6 - 3/8	10 - 3/8
6 - 1/8	8 - 1/4	

**55410**  
BANJO STEM SINGLE



M5	3/8
M6	1/2
1/8	M12x1.5
1/4	

**55420**  
BANJO STEM DOUBLE



1/8	1/2
1/4	M12x1.5
3/8	

**55430**  
BANJO STEM TRIPLE



1/8
1/4
3/8
1/2

**55440**  
MALE - FEMALE BANJO STEM SINGLE



1/8 - 1/8
1/4 - 1/4
3/8 - 3/8

**50600**  
MALE ADAPTOR PARALLEL



4 - M5	6 - 1/8	10 - 1/4
4 - 1/8	6 - 1/4	10 - 3/8
5 - M5	8 - 1/8	12 - 1/4
5 - 1/8	8 - 1/4	12 - 3/8
5 - 1/4	8 - 3/8	14 - 1/2
6 - M5	10 - 1/8	

**50610**  
POLYAMIDE PLUG



3	6	12
4	8	14
5	10	

**50625**  
DOUBLE JOINT



4	8
5	10
6	12

**55625**  
DOUBLE JOINT

**New**



4	10
6	12
8	14

**50700N**  
REDUCER



4 - 3	8 - 4	10 - 8
5 - 4	8 - 6	12 - 8
6 - 4	10 - 4	12 - 10
6 - 5	10 - 6	

**55700**  
REDUCER



6 - 4	10 - 8	14 - 8
8 - 4	12 - 6	14 - 10
8 - 6	12 - 8	14 - 12
10 - 6	12 - 10	

**55705**  
REDUCER



4 - 6	8 - 10
6 - 8	10 - 12

**55800N**  
PUSH-FIT CARTRIDGES



3	6	10
4	8	12
5		

**55801**  
TOOL FOR PUSH-FIT CARTRIDGES SEAT



3	6	10
4	8	12
5		

**55802**  
ASSEMBLING TOOL FOR PUSH-FIT CARTRIDGES



3	6	10
4	8	12
5		

**50900N**  
ALUMINIUM MANIFOLD 5 WAYS



4 - 1/8	6 - 1/4
6 - 1/8	8 - 1/4

**50980**  
SECURITY CLIPS



4 - (5/32)	8 - (5/16)	12 - (1/2)
5	10 - (3/8)	14
6 - (1/4)		

**50990**  
TOOL FOR DISASSEMBLING



**50006**  
THREAD PACKING FOR THE "UNIVERSAL SHORT" TAPER THREADS



1/8	3/8
1/4	1/2

**New** **SERIE 56000 "MINI"**

**56010**  
STRAIGHT MALE ADAPTOR (PARALLEL) WITH EXAGON EMBEDDED



4 - M5
4 - M7
6 - M5
6 - M7

**56020**  
STRAIGHT MALE ADAPTOR (PARALLEL)



2 - M3	4 - M3	6 - M5
2 - M5	4 - M5	6 - M7
3 - M3	4 - M7	6 - 1/8
3 - M5	4 - 1/8	6 - 1/4

**56040**  
STRAIGHT CONNECTOR



4 - 4
6 - 6
8 - 6

**56050**  
BULKHEAD CONNECTOR



4
6

**56115**  
ORIENTING ELBOW MALE ADAPTOR (PARALLEL)



2 - M3	4 - M5	6 - 1/8
2 - M5	4 - 1/8	6 - 1/4
3 - M3	4 - 1/4	
3 - M5	6 - M5	

**56130**  
EQUAL ELBOW



2
3
4
6

**56215**  
ORIENTING TEE MALE ADAPTOR (PARALLEL) CENTRE LEG



2 - M3
2 - M5
3 - M3
3 - M5

**56225**  
ORIENTING TEE MALE ADAPTOR (PARALLEL) OFF - CENTRE LEG



2 - M3
2 - M5
3 - M3
3 - M5

**56230**  
TEE CONNECTOR



2	4
3	6

**56550**  
ORIENTING SINGLE BANJO BODY MALE



3 - M3
3 - M5

**56900**  
ORIENTING FLOW REGULATOR FOR CYLINDER



4 - M5
6 - M5

**56910**  
ORIENTING FLOW REGULATOR FOR VALVE



4 - M5
6 - M5

**56920**  
ORIENTING BI-DIRECTIONAL FLOW REGULATOR



4 - M5
6 - M5

**56935**  
ORIENTING FLOW REGULATOR FOR CYLINDER



4 - M5	4 - 1/8
6 - M5	6 - 1/8

**56945**  
ORIENTING FLOW REGULATOR FOR VALVE



4 - M5	4 - 1/8
6 - M5	6 - 1/8

**56955**  
ORIENTING BI-DIRECTIONAL FLOW REGULATOR



4 - M5	4 - 1/8
6 - M5	6 - 1/8

# Serie 57000

## METALLIC PUSH-IN FITTINGS



### Application

- Robotics
- Automotive e Welding
- Heavy Industry, Railways
- Compressed air Circuit
- Cooling water
- Vacuum
- Glycol with EPDM



### Reference Standard

- 1907/2006 REACH ✓
- 2011/65/CE RoHS ✓
- 97/23/CE (PED)
- ISO 14743:2004
- SILICON FREE



### Component Parts and Materials

- Nickel-plated brass Body
- Nickel-plated brass Collet
- Steel AISI 301 Clamping washer
- NBR seal (if requested EPDM)



### Fluids

- Compressed air
- Vacuum
- Water
- Steam (EPDM)



### Pressures

- 0.99 bar (-0.099 MPa)
- 20 bar (2.0 MPa)



### Connection Tubes

Plastic tubes:

PA6, PA11, PA12, Polyethylene, \*Polyurethane, PTFE, FEP.

*\*For Polyurethane hoses it is required a minimum hardness of 98 shore.*



### Temperatures

- 20 °C
- + 80 °C

EPDM:

- 40 °C
- + 130 °C



### Threads

- "UNIVERSAL SHORT" Tapered thread (See p.18).
- Tapered gas in conformity with ISO7.1, BS 21, DIN 2999.
- Parallel gas in conformity with ISO 228 Class A.
- Metric in conformity with ISO R/262.

### 57000

STRAIGHT MALE ADAPTOR "UNIVERSAL SHORT"



4 (5/32) - 1/8	8 (5/16) - 1/8	10 - 1/2
4 (5/32) - 1/4	8 (5/16) - 1/4	12 - 1/4
6 - 1/8	8 (5/16) - 3/8	12 - 3/8
6 - 1/4	8 (5/16) - 1/2	12 - 1/2
6 - 3/8	10 - 1/4	14 - 3/8
6 - 1/2	10 - 3/8	14 - 1/2

### 57010

STRAIGHT MALE ADAPTOR WITH EXAGON EMBEDDED



4 (5/32) - 1/8	8 (5/16) - 1/8
6 - 1/8	8 (5/16) - 1/4
6 - 1/4	

### 57010

STRAIGHT MALE ADAPTOR (PARALLEL) WITH EXAGON EMBEDDED



4 - M5
4 - M7x1
6 - M5

### 57020

STRAIGHT MALE ADAPTOR (PARALLEL)



4 - M5	6 - 1/2	12 - 3/8
4 - 1/8	8 - 1/8	12 - 1/2
4 - 1/4	8 - 1/4	14 - 3/8
5 - M5	8 - 3/8	14 - 1/2
5 - 1/8	8 - 1/2	6 - M12x1
6 - M5	10 - 1/4	6 - M12x1.25
6 - 1/8	10 - 3/8	6 - M12x1.5
6 - 1/4	10 - 1/2	8 - M12x1.5
6 - 3/8	12 - 1/4	

**57030**  
STRAIGHT FEMALE ADAPTOR



4 - M5	6 - 1/4	10 - 3/8
4 - 1/8	8 - 1/8	10 - 1/2
4 - 1/4	8 - 1/4	12 - 3/8
5 - 1/8	8 - 3/8	12 - 1/2
6 - 1/8	10 - 1/4	

**57040**  
STRAIGHT CONNECTOR



4 (5/32)	8 - 6	12 - 10
5	8 (5/16)	12
6 - 4	10 - 8	14
6	10	

**57050**  
BULKHEAD CONNECTOR



4 (5/32) - M12x1	8 (5/16) - M16x1
5 - M14x1	10 - M20x1
6 - M14x1	12 - M22x1

**57060**  
BULKHEAD ORIENTING ELBOW

New



4 (5/32) - M12x1	10 - M20x1
6 - M14x1	12 - M22x1
8 (5/16) - M16x1	14 - M23x1

**57100**  
ELBOW MALE ADAPTOR (TAPER)



4 - M5	6 - 1/8	10 - 1/4
4 - 1/8	6 - 1/4	10 - 3/8
5 - M5	8 - 1/8	12 - 1/4
5 - 1/8	8 - 1/4	12 - 3/8

**57106**  
ORIENTING ELBOW FEMALE ADAPTOR



4 - 1/8	6 - 1/4
4 - 1/4	8 - 1/8
6 - 1/8	8 - 1/4

**57111**  
ORIENTING ELBOW MALE ADAPTOR  
"UNIVERSAL SHORT"



4 (5/32) - 1/8	8 (5/16) - 1/4	10 - 1/2
4 (5/32) - 1/4	8 (5/16) - 3/8	12 - 3/8
6 - 1/8	8 (5/16) - 1/2	12 - 1/2
6 - 1/4	10 - 1/4	14 - 3/8
8 (5/16) - 1/8	10 - 3/8	14 - 1/2

**57116**  
ORIENTING ELBOW MALE ADAPTOR  
(PARALLEL)



4 - M5	8 - 1/8	12 - 3/8
4 - 1/8	8 - 1/4	12 - 1/2
4 - 1/4	8 - 3/8	14 - 3/8
5 - M5	8 - 1/2	14 - 1/2
5 - 1/8	10 - 1/4	6 - M12x1
6 - M5	10 - 3/8	6 - M12x1.25
6 - 1/8	10 - 1/2	6 - M12x1.5
6 - 1/4	12 - 1/4	8 - M12x1.5

**57126**  
EXTENDED ORIENTING ELBOW MALE  
ADAPTOR (PARALLEL)



4 - 1/8	6 - 1/4	10 - 1/4
4 - 1/4	8 - 1/8	10 - 3/8
5 - 1/8	8 - 1/4	
6 - 1/8	8 - 3/8	

**57130**  
ELBOW CONNECTOR



4 (5/32)	10
5	12
6	14
8 (5/16)	

**57200**  
TEE MALE ADAPTOR (TAPER) CENTRE LEG



4 - M5	8 - 1/8	12 - 1/4
4 - 1/8	8 - 1/4	12 - 3/8
5 - 1/8	10 - 1/4	
6 - 1/8	10 - 3/8	

**57211**  
ORIENTING TEE MALE ADAPTOR  
"UNIVERSAL SHORT" - CENTRE LEG



4 (5/32) - 1/8	8 (5/16) - 1/8	10 - 3/8
4 (5/32) - 1/4	8 (5/16) - 1/4	10 - 1/2
6 - 1/8	8 (5/16) - 3/8	12 - 3/8
6 - 1/4	10 - 1/4	12 - 1/2

**57216**  
ORIENTING TEE MALE ADAPTOR (PARALLEL)  
CENTRE LEG



4 - M5	8 - 1/8	12 - 1/2
4 - 1/8	8 - 1/4	14 - 3/8
4 - 1/4	8 - 3/8	14 - 1/2
5 - M5	8 - 1/2	6 - M12x1
5 - 1/8	10 - 1/4	6 - M12x1.25
6 - M5	10 - 3/8	6 - M12x1.5
6 - 1/8	10 - 1/2	
6 - 1/4	12 - 3/8	

**57223**  
ORIENTING TEE MALE ADAPTOR  
"UNIVERSAL SHORT" OFF - SET LEG



4 (5/32) - 1/8	8 (5/16) - 1/8	10 - 3/8
4 (5/32) - 1/4	8 (5/16) - 1/4	10 - 1/2
6 - 1/8	8 (5/16) - 3/8	12 - 3/8
6 - 1/4	10 - 1/4	12 - 1/2

**57226**  
ORIENTING TEE MALE ADAPTOR (PARALLEL)  
OFF - SET LEG



4 - M5	6 - 1/4	10 - 1/2
4 - 1/8	8 - 1/8	12 - 3/8
4 - 1/4	8 - 1/4	12 - 1/2
5 - M5	8 - 3/8	6 - M12x1
5 - 1/8	8 - 1/2	6 - M12x1.25
6 - M5	10 - 1/4	6 - M12x1.5
6 - 1/8	10 - 3/8	

**57230**  
TEE CONNECTOR



4 (5/32)	10
5	12
6	14
8 (5/16)	

**57310**  
Y CONNECTOR



4 (5/32)	8 (5/16)
5	10
6	

**57500**  
SINGLE BANJO BODY



4 (5/32) - M5(10/32)	6 - 1/4
4 - M6	8 (5/16) - 1/8
4 (5/32) - 1/8	8 (5/16) - 1/4
5 - M5	8 (5/16) - 3/8
5 - M6	10 - 1/4
5 - 1/8	10 - 3/8
5 - 1/4	12 - 3/8
6 - M5	12 - 1/2
6 - M6	14 - 1/2
6 - 1/8	

**57510**  
DOUBLE BANJO BODY



4 (5/32) - M5	5 - 1/8	6 - 1/4
4 (5/32) - M6	5 - 1/4	8 (5/16) - 1/8
4 (5/32) - 1/8	6 - 1/8	8 (5/16) - 1/4

**57550**  
ORIENTING SINGLE BANJO BODY MALE



4 - M5	6 - M5	8 - 3/8
4 - 1/8	6 - 1/8	10 - 1/4
5 - M5	6 - 1/4	10 - 3/8
5 - 1/8	8 - 1/8	12 - 3/8
5 - 1/4	8 - 1/4	

**57560**  
ORIENTING DOUBLE BANJO BODY MALE



4 - 1/8	6 - 1/4
5 - 1/8	8 - 1/8
5 - 1/4	8 - 1/4
6 - 1/8	

**51410**  
BANJO STEM SINGLE



M5	3/8
M6	1/2
1/8	M12x1.5
1/4	

**51420**  
BANJO STEM DOUBLE



1/8	1/2
1/4	M12x1.5
3/8	

**51430**  
BANJO STEM TRIPLE



1/8
1/4
3/8
1/2

**51440**  
MALE - FEMALE BANJO STEM SINGLE



1/8 - 1/8
1/4 - 1/4
3/8 - 3/8

**50600**  
MALE ADAPTOR PARALLEL



4 - M5	6 - 1/8	10 - 1/4
4 - 1/8	6 - 1/4	10 - 3/8
5 - M5	8 - 1/8	12 - 1/4
5 - 1/8	8 - 1/4	12 - 3/8
5 - 1/4	8 - 3/8	14 - 1/2
6 - M5	10 - 1/8	

**57610**  
PLUG New



4 - (5/32)	10
5	12
6	14
8 - (5/16)	

**50625**  
DOUBLE JOINT



4 (5/32)	8 - (5/16)
5	10
6	12

**57700**  
REDUCER



5 - 4	8 (5/16) - 4 (5/32)	10 - 8
6 - 4	8 - 6	12 - 8
6 - 5	10 - 4	12 - 10

**57800**  
PUSH-FIT CARTRIDGES



4	8
5	10
6	12

**55801**  
TOOL FOR PUSH-FIT CARTRIDGES SEAT



4	8
5	10
6	12

**55802**  
ASSEMBLING TOOL FOR PUSH-FIT CARTRIDGES



4	8
5	10
6	12

**50980**  
SECURITY CLIPS



4 - (5/32)	10 - (3/8)
5	12 - (1/2)
6 - (1/4)	14
8 - (5/16)	

**50990**  
TOOL FOR DISASSEMBLING



**50006**  
THREAD PACKING FOR THE "UNIVERSAL SHORT" TAPER THREADS



1/8
1/4
3/8
1/2



# Serie 40000V

METALLIC PUSH-IN FITTINGS WITH FKM SEAL



### Application

- Compressed Air, Cooling Water, Vacuum, Steam
- Pneumatic Automation with High Temperature
- Automotive & Welding
- Heavy Duty Industry
- Vibrations environment



### Reference Standard

1907/2006 REACH ✓	2011/65/CE RoHS ✓	97/23/CE (PED)	ISO 14743:2004	SILICON FREE
----------------------	----------------------	-------------------	-------------------	-----------------



### Component Parts and Materials

- Nickel-plated brass Body
- Nickel-plated brass Collet
- Steel AISI 301 Clamping washer
- FKM seal



### Connection Tubes

Plastic tubes:  
PA6, PA11, PA12, Polyethylene, \*Polyurethane, PTFE, FEP.  
*\*For Polyurethane hoses it is required a minimum hardness of 98 shore.*



### Pressures

- 0.99 bar (-0.099 MPa)  
30 bar (3.0 MPa)



### Threads

- Parallel gas in conformity with ISO 228 Class A.



### Temperatures

- 15 °C  
+ 130 °C



### Fluids

- Compressed air
- Vacuum
- Water
- Steam

**40020V**  
STRAIGHT MALE ADAPTOR (PARALLEL)



4 - 1/8	8 - 1/8	10 - 1/2
4 - 1/4	8 - 1/4	12 - 1/4
6 - 1/8	8 - 3/8	12 - 3/8
6 - 1/4	8 - 1/2	12 - 1/2
6 - 3/8	10 - 1/4	14 - 3/8
6 - 1/2	10 - 3/8	14 - 1/2

**40030V**  
STRAIGHT FEMALE ADAPTOR



4 - 1/8	8 - 1/8	10 - 3/8
4 - 1/4	8 - 1/4	10 - 1/2
6 - 1/8	8 - 3/8	12 - 3/8
6 - 1/4	10 - 1/4	12 - 1/2

**40040V**  
STRAIGHT CONNECTOR



4 (5/32)	10 - 8
6 - 4	10
6	12 - 10
8 - 6	12
8 (5/16)	14

**40050V**  
BULKHEAD CONNECTOR



4 (5/32) - M12x1
6 - M14x1
8 (5/16) - M16x1
10 - M20x1
12 - M22x1



**40060V**  
BULKHEAD ORIENTING ELBOW



4 - M12x1	10 - M20x1
6 - M14x1	12 - M22x1
8 - M16x1	14 - M23x1

**40106V**  
ORIENTING ELBOW FEMALE ADAPTOR



4 - 1/8	6 - 1/4
4 - 1/4	8 - 1/8
6 - 1/8	8 - 1/4

**40116V**  
ORIENTING ELBOW MALE ADAPTOR (PARALLEL)



4 - 1/8	8 - 3/8	12 - 3/8
4 - 1/4	8 - 1/2	12 - 1/2
6 - 1/8	10 - 1/4	14 - 3/8
6 - 1/4	10 - 3/8	14 - 1/2
8 - 1/8	10 - 1/2	
8 - 1/4	12 - 1/4	

**40130V**  
ELBOW CONNECTOR



4 (5/32)	10
6	12
8 (5/16)	14

**40216V**  
ORIENTING TEE MALE ADAPTOR (PARALLEL) CENTRE LEG



4 - 1/8	8 - 1/4	10 - 1/2
4 - 1/4	8 - 3/8	12 - 3/8
6 - 1/8	8 - 1/2	12 - 1/2
6 - 1/4	10 - 1/4	14 - 3/8
8 - 1/8	10 - 3/8	14 - 1/2

**40226V**  
ORIENTING TEE MALE ADAPTOR (PARALLEL) OFF - SET LEG



4 - 1/8	8 - 1/4	10 - 1/2
4 - 1/4	8 - 3/8	12 - 3/8
6 - 1/8	8 - 1/2	12 - 1/2
6 - 1/4	10 - 1/4	
8 - 1/8	10 - 3/8	

**40230V**  
TEE CONNECTOR



4 (5/32)	10
6	12
8 (5/16)	14

**40310V**  
Y CONNECTOR



4 (5/32)	10
6	12
8 (5/16)	14

**40550V**  
ORIENTING SINGLE BANJO BODY MALE



4 - M5	6 - 1/4	10 - 1/4
4 - 1/8	8 - 1/8	10 - 3/8
6 - M5	8 - 1/4	12 - 3/8
6 - 1/8	8 - 3/8	

**50600V**  
MALE ADAPTOR PARALLEL



4 - M5	8 - 1/8	10 - 3/8
4 - 1/8	8 - 1/4	12 - 1/4
6 - M5	8 - 3/8	12 - 3/8
6 - 1/8	10 - 1/8	14 - 1/2
6 - 1/4	10 - 1/4	

**CH028**  
MALE HOSE ADAPTER



12 - 10	8 - 8,3
8 - 10	12 - 12
12 - 14,5	

**50625**  
DOUBLE JOINT



4	10
6	12
8	

**40700V**  
REDUCER



6 - 4	10 - 8
8 - 4	12 - 8
8 - 6	12 - 10
10 - 4	

**57610**  
PLUG



4	10
6	12
8	14

**50980**  
SECURITY CLIPS



4 - (5/32)	10 - (3/8)
6 - (1/4)	12 - (1/2)
8 - (5/16)	

# Serie Foods & Drinks

FOOD GRADE PUSH-IN FITTING FOR DRINKING WATER - NSF/ANSI 51-61-372 CONFORMED



### Application

- Dairy
- Coffee Machines, Vending
- Food & Beverage
- Medical
- Vacuum



### Component Parts and Materials

- CW510L brass body
- PPSU Collet
- Steel AISI 301 clamping washer
- Food FKM seal



### Pressures

- 0.99 bar (-0.099 MPa)  
20 bar (2.0 MPa)



### Temperatures

- 15 °C  
+ 190 °C



### Reference Standard

1907/2006

REACH ✓

2011/65/CE

RoHS ✓

97/23/CE

(PED)

ISO

14743:2004

SILICON

FREE

### Compliance

NSF / ANSI 51 - 61 - 372



### Connection Tubes

Plastic tubes:

PA6, PA11, PA12, Polyethylene, \*Polyurethane, PTFE, FEP.

*\*For Polyurethane hoses it is required a minimum hardness of 98 shore.*



### Threads

- Tapered gas in conformity with ISO7.1, BS 21, DIN 2999.
- Parallel gas in conformity with ISO 228 Class A.



### Fluids

- Compressed air
- Vacuum
- Water
- Steam
- Food

#### 59020

STRAIGHT MALE ADAPTOR (PARALLEL)



4 - 1/8  
6 - 1/8  
6 - 1/4  
8 - 1/8  
8 - 1/4

#### 59030

STRAIGHT FEMALE ADAPTOR



4 - 1/8  
6 - 1/8  
6 - 1/4  
8 - 3/8

#### 59040

STRAIGHT CONNECTOR



4  
6  
8

#### 59100

ELBOW MALE ADAPTOR (TAPER)



4 - 1/8  
6 - 1/8  
6 - 1/4  
8 - 1/4

#### 59116

ORIENTING ELBOW MALE ADAPTOR (PARALLEL)



4 - 1/8  
6 - 1/8  
6 - 1/4  
6 - 3/8  
8 - 1/4  
8 - 3/8

#### 59130

ELBOW CONNECTOR



4  
6  
8

#### 59216

ORIENTING TEE MALE ADAPTOR (PARALLEL)- CENTRE LEG



4 - 1/8  
6 - 1/8  
6 - 1/4  
8 - 1/4  
8 - 3/8

#### 59226

ORIENTING TEE MALE ADAPTOR (PARALLEL) OFF - SET LEG



4 - 1/8  
6 - 1/8  
6 - 1/4  
8 - 1/4  
8 - 3/8

#### 59230

TEE CONNECTOR



4  
6  
8



# Serie 70000

## FOOD GRADE PUSH-IN FITTINGS NSF/ANSI 51



### Application

- Dairy
- Coffee Machine, Vending
- Food & Beverage
- Medical
- Vacuum



### Reference Standard

1907/2006 REACH ✓	2011/65/CE RoHS ✓	97/23/CE (PED)
ISO 14743:2004	SILICON FREE	NSF/ANSI 51 NSF



### Component Parts and Materials

- Nickel-plated brass Body Food Grade
- Nickel-plated brass Collet Food Grade
- Steel AISI 301 Clamping washer
- Food FKM seal



### Connection Tubes

Plastic tubes:  
PA6, PA11, PA12, Polyethylene, \*Polyurethane, PTFE, FEP.  
*\*For Polyurethane hoses it is required a minimum hardness of 98 shore.*



### Pressures

- 0.99 bar (-0.099 MPa)  
20 bar (2.0 MPa)



### Threads

- Parallel gas in conformity with ISO 228 Class A.



### Temperatures

- 15 °C  
+ 200 °C



### Fluids

- Compressed air
- Vacuum
- Steam
- Foods

#### 70020

STRAIGHT MALE ADAPTOR (PARALLEL)



4 - M5	6 - 1/4	10 - 1/4
4 - 1/8	8 - 1/8	10 - 3/8
6 - 1/8	8 - 1/4	12 - 3/8

#### 70040

STRAIGHT CONNECTOR



4	10
6	12
8	

#### 70116

ORIENTING ELBOW MALE ADAPTOR (PARALLEL)



4 - M5	6 - 1/4	10 - 1/4
4 - 1/8	8 - 1/8	10 - 3/8
6 - 1/8	8 - 1/4	12 - 3/8

#### 70216

ORIENTING TEE MALE ADAPTOR (PARALLEL) CENTRE LEG



4 - 1/8	8 - 1/8
6 - 1/8	8 - 1/4
6 - 1/4	

#### 70230

TEE CONNECTOR



4	10
6	12
8	

#### 50980

SECURITY CLIPS



4-(5/32)	10-(3/8)
5	12-(1/2)
6-(1/4)	14
8-(5/16)	



# Serie INOX

PUSH-IN FITTINGS, PUSH-ON FITTINGS, QUICK COUPLINGS, ADAPTERS, BALL VALVE AND FUNCTION FITTINGS

## SERIE 60000 STAINLESS STEEL PUSH-IN FITTINGS



### Application

- Automation with Washing
- Farming, Mining
- Chemical, Petrochemical, Pharmaceutical
- Medical, Life&Sciences
- Vacuum



### Component Parts and Materials

- AISI 316L Steel Body
- AISI 316L Steel Collet
- AISI 316L Steel Clamping washer
- Food FKM seal



### Pressures

- 0.99 bar (-0.099 MPa)  
20 bar (2.0 MPa)



### Temperatures

- 15 °C  
+ 200 °C



### Reference Standard

1907/2006 REACH ✓	2011/65/CE RoHS ✓	97/23/CE (PED)	ISO 14743:2004	SILICON FREE
----------------------	----------------------	-------------------	-------------------	-----------------



### Connection Tubes

Plastic tubes:  
PA6, PA11, PA12, Polyethylene, \*Polyurethane, PTFE, FEP.  
*\*For Polyurethane hoses it is required a minimum hardness of 98 shore.*



### Threads

- Tapered gas in conformity with ISO7.1, BS 21, DIN 2999.
- Parallel gas in conformity with ISO 228 Class A.
- Metric in conformity with ISO R/262.



### Fluids

- Compressed air
- Vacuum
- Fluid for food and chemical industry compatible with fitting components.

#### 60000 STRAIGHT MALE ADAPTOR (TAPER)



4 - 1/8	8 - 1/8	12 - 3/8
4 - 1/4	8 - 1/4	12 - 1/2
6 - 1/8	10 - 1/4	
6 - 1/4	10 - 3/8	

#### 60020 STRAIGHT MALE ADAPTOR (PARALLEL)



4 - M5	6 - 1/8	10 - 1/4
4 - 1/8	6 - 1/4	10 - 3/8
4 - 1/4	8 - 1/8	12 - 3/8
6 - M5	8 - 1/4	12 - 1/2

#### 60040 STRAIGHT CONNECTOR



4  
6  
8  
10  
12

#### 60050 BULKHEAD CONNECTOR



4 - M12x1  
6 - M14x1  
8 - M16x1  
10 - M20x1  
12 - M22x1

#### 60110 ORIENTING ELBOW MALE ADAPTOR (TAPER)



4 - 1/8	8 - 1/8	10 - 1/2
4 - 1/4	8 - 1/4	12 - 3/8
6 - 1/8	10 - 1/4	12 - 1/2
6 - 1/4	10 - 3/8	

#### 60115 ORIENTING ELBOW MALE ADAPTOR (PARALLEL)



4 - M5	6 - 1/4	10 - 1/2
4 - 1/8	8 - 1/8	12 - 3/8
4 - 1/4	8 - 1/4	12 - 1/2
6 - M5	10 - 1/4	
6 - 1/8	10 - 3/8	

#### 60130 ELBOW CONNECTOR



4  
6  
8  
10  
12

#### 60210 ORIENTING TEE MALE ADAPTOR (TAPER) CENTRE LEG



4 - 1/8	8 - 1/8	10 - 1/2
4 - 1/4	8 - 1/4	12 - 3/8
6 - 1/8	10 - 1/4	12 - 1/2
6 - 1/4	10 - 3/8	

**60215**  
ORIENTING TEE MALE ADAPTOR (PARALLEL)  
CENTRE LEG



4 - M5	6 - 1/4	10 - 3/8
4 - 1/8	8 - 1/8	10 - 1/2
4 - 1/4	8 - 1/4	12 - 3/8
6 - 1/8	10 - 1/4	12 - 1/2

**60230**  
TEE CONNECTOR



4
6
8
10
12

**60600**  
MALE ADAPTOR PARALLEL



6 - 1/8	10 - 3/8
8 - 1/4	12 - 3/8
10 - 1/4	12 - 1/2

**SERIE 61000**  
**STAINLESS STEEL PUSH-ON FITTINGS**



**Application**

- Dairy
- Food & Beverage
- Chemical, Petrochemical, Pharmaceutical
- Medical, Life&Sciences
- Inkjet, Printing
- Vacuum



**Component Parts and Materials**

- AISI 316L Steel Nut
- AISI 316L Steel Body
- Food FKM seal



**Pressures and Temperatures**

The working pressures and working temperatures depend on which type of tube used, for this reason, the values must be determined in accordance with the tube's features.



**Reference Standard**

1907/2006 REACH ✓	2011/65/CE RoHS ✓	97/23/CE (PED)	ISO 14743:2004	SILICON FREE
----------------------	----------------------	-------------------	-------------------	-----------------



**Connection Tubes**

Plastic tubes:  
PA6, PA11, PA12, Polyethylene, \*Polyurethane, PTFE, FEP.  
*\*For Polyurethane hoses it is required a minimum hardness of 98 shore.*



**Threads**

- "UNIVERSAL SHORT" Tapered thread (See p.18).
- Tapered gas in conformity with ISO7.1, BS 21, DIN 2999.
- Parallel gas in conformity with ISO 228 Class A.
- Metric in conformity with ISO R/262.



**Fluids**

- Compressed air
- Vacuum
- Water
- Fluid for food and chemical industry compatible with fitting components.

**61005**  
STRAIGHT MALE ADAPTOR "UNIVERSAL SHORT"



6/4 - 1/8	8/6 - 1/4
6/4 - 1/4	10/8 - 1/4
8/6 - 1/8	10/8 - 3/8

**61040**  
STRAIGHT CONNECTOR



6/4
8/6
10/8

**61050**  
BULKHEAD CONNECTOR



6/4 - M10x1
8/6 - M12x1

**61100**  
ELBOW MALE ADAPTOR (TAPER)



6/4 - 1/8	8/6 - 1/4
6/4 - 1/4	10/8 - 1/4
8/6 - 1/8	10/8 - 3/8

**61130**  
ELBOW CONNECTOR



6/4
8/6
10/8

**61200**  
TEE MALE ADAPTOR (TAPER)-CENTRE LEG



6/4 - 1/8	8/6 - 1/4
6/4 - 1/4	10/8 - 1/4
8/6 - 1/8	10/8 - 3/8

**61230**  
TEE CONNECTOR



6/4
8/6
10/8

**61700**  
NUT



6/4 - M10x1
8/6 - M12x1
10/8 - M14x1

**SERIE 62000  
STAINLESS STEEL ADAPTERS**



**Application**

- Dairy
- Food & Beverage
- Chemical, Petrochemical, Pharmaceutical
- Medical, Life&Sciences
- Inkjet, Printing
- Vacuum



**Pressures**

- 0.99 bar (-0.099 MPa)  
140 bar (14 MPa)



**Temperatures**

- 110 °C  
+ 300 °C



**Reference Standard**

1907/2006  
REACH ✓

2011/65/CE  
RoHS ✓

97/23/CE  
(PED)

SILICON  
FREE



**Threads**

- Tapered gas in conformity with ISO7.1, BS 21, DIN 2999.
- Parallel gas in conformity with ISO 228 Class A.
- Metric in conformity with ISO R/262.



**Fluids**

Fluid for food and chemical industry compatible with fitting components.

**62000  
NIPPLE (TAPER)**



1/8	1/2
1/4	3/4
3/8	

**62020  
REDUCING NIPPLE (TAPER)**



1/8 - 1/4	1/4 - 1/2
1/8 - 3/8	3/8 - 1/2
1/4 - 3/8	1/2 - 3/4

**62040  
REDUCER (TAPER)**



1/8 - 1/4	3/8 - 1/2
1/4 - 3/8	1/2 - 3/4
1/4 - 1/2	

**62080  
REDUCER (TAPER)**



1/4 - 1/8	1/2 - 1/4
3/8 - 1/8	1/2 - 3/8
3/8 - 1/4	3/4 - 1/2

**62300  
SLEEVE**



1/8	1/2
1/4	3/4
3/8	

**62310  
REDUCING SLEEVE**



1/8 - 1/4	3/8 - 1/2
1/4 - 3/8	1/2 - 3/4

**62315  
MALE PLUG (PARALLEL) WITH EXAGON EMBEDDED**



M5	3/8
1/8	1/2
1/4	

**62320  
MALE PLUG (PARALLEL)**



1/8	1/2
1/4	3/4
3/8	

**62325  
MALE PLUG (TAPER) DIN 906**



1/8
1/4
3/8
1/2

**62340  
MALE HOSE ADAPTER (TAPER)**



6 - 1/8	10 - 3/8	16 - 1/2
7 - 1/8	10 - 1/2	18 - 1/2
7 - 1/4	12 - 1/4	18 - 3/4
8 - 1/4	12 - 3/8	20 - 1/2
9 - 1/4	12 - 1/2	20 - 3/4
9 - 3/8	14 - 3/8	
10 - 1/4	14 - 1/2	

**62400  
FEMALE TEE**



1/8
1/4
3/8
1/2

**62440  
CENTRE LEG MALE TEE**



1/8
1/4
3/8
1/2

**62450  
OFF SET MALE TEE**



1/8
1/4
3/8
1/2

**62510  
FEMALE ELBOW**



1/8
1/4
3/8
1/2

**62520  
MALE - FEMALE ELBOW**



1/8
1/4
3/8
1/2

**62540  
SILENCER**



1/8
1/4
3/8
1/2

**SERIE 63000  
STAINLESS STEEL MULTISOCKET**



**Application**

- Compressed Air & Tools
- Pneumatic and Fluidtechnology
- Food & Beverage
- Life & Sciences
- Inert Gases



**Component Parts and Materials**

- AISI 316L Steel body
- AISI 302 Steel spring
- AISI 420 Steel ball
- Food FKM seal



**Pressures**

**0 bar (0 MPa)**      **Maximum static pressure (no pulsations):**  
**16 bar (1.6 MPa)**      **35 bar (3.5 MPa)**



**Reference Standard**

1907/2006 REACH ✓    2011/65/CE RoHS ✓    97/23/CE (PED)    SILICON FREE



**Temperatures**

- 15 °C  
+ 200 °C



**Threads**

- Parallel gas in conformity with ISO 228 Class A.
- "UNIVERSAL SHORT" Tapered thread (See p.18).



**Fluids**

- Compressed air
- Fluid for food and chemical industry compatible with all components.

**63190**  
MALE SOCKET "UNIVERSAL SHORT"



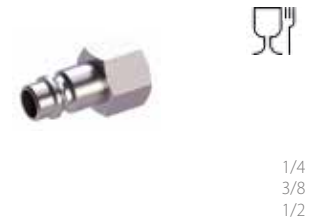
**63192**  
FEMALE SOCKET



**63260**  
MALE PLUG EUROPEAN PROFILE "UNIVERSAL SHORT"



**63262**  
FEMALE PLUG EUROPEAN PROFILE



**SERIE 66000  
STAINLESS STEEL FUNCTION FITTINGS**



**Application**

- Dairy
- Food & Beverage
- Chemical, Petrochemical, Pharmaceutical
- Medical, Life&Sciences, Inert Gases
- Vacuum



**Threads**

- Parallel gas in conformity with ISO 228 Class A.



**Reference Standard**

1907/2006 REACH ✓    2011/65/CE RoHS ✓    97/23/CE (PED)    SILICON FREE



**Fluids**

- Compressed air
- Vacuum
- Water
- Oils
- Fluid for food and chemical industry compatible with fitting components.

**66050**  
QUICK EXHAUST VALVE



**66062**  
FEMALE-FEMALE NON RETURN VALVE



**66070**  
ORIENTING FLOW REGULATOR FOR CYLINDER



**66085**  
UNI-DIRECTIONAL IN-LINE FLOW REGULATOR



**SERIE GHINOX  
STAINLESS STEEL MINIBALL VALVES**



**Component Parts and Materials**

- Stainless steel AISI316L Body
- PTFE Seats
- FKM Seal O-RING



**Reference Standard**

1907/2006  
REACH ✓

2011/65/CE  
RoHS ✓

97/23/CE  
(PED)

ISO  
14743:2004

SILICON  
FREE



**Pressures**

- 0.99 bar (-0.099 MPa)
- 40 bar (4.0 MPa)



**Fluids**

- Compressed air
- Vacuum
- Water
- Oils
- Fluid for food and chemical industry compatible with components.



**Temperatures**

- 15 °C Minimum temperature
- + 150 °C Maximum temperature in continuos
- + 180 °C Maximum temperature for short term



**Threads**

- Tapered gas in conformity with ISO7.1, BS 21, DIN 2999.

**66300**  
FEMALE RP ISO 7 - FEMALE RP ISO 7 VALVE



1/8 - 1/8  
1/4 - 1/4

**66310**  
TAPER MALE R ISO 7 - FEMALE RP ISO 7 VALVE



1/8 - 1/8  
1/4 - 1/4



# Serie 89000

METALLIC PUSH-IN FITTINGS FOR INCH TUBE



## Application

- Robotics
- Automotive e Welding
- Heavy Industry, Railways
- Compressed air Circuit
- Cooling water, Vacuum
- Glycol with EPDM



## Reference Standard

- 1907/2006 REACH ✓
- 2011/65/CE RoHS ✓
- 97/23/CE (PED)
- ISO 14743:2004
- SILICON FREE



## Component Parts and Materials

- Nickel-plated brass Body
- Nickel-plated brass Collet
- Steel AISI 301 Clamping washer
- NBR seal (if requested FKM - EPDM)



## Fluids

- Compressed air
- Vacuum
- Water
- Steam



## Pressures

- 0.99 bar (-0.099 MPa)
- 20 bar (2.0 MPa)



## Connection Tubes

Plastic tubes:

PA6, PA11, PA12, Polyethylene, \*Polyurethane, PTFE, FEP.

*\*For Polyurethane hoses it is required a minimum hardness of 98 shore.*



## Temperatures

- 20 °C
- + 80 °C

EPDM

- 40 °C
- + 130 °C

FKM

- 15 °C
- + 130 °C



## Threads

- "UNIVERSAL SHORT" Tapered thread (see p.18).
- Parallel gas in conformity with UNF.

### 89000

STRAIGHT MALE ADAPTOR  
"UNIVERSAL SHORT"



1/8 - 10/32	5/16 (8) - 1/4
1/8 - 1/8	5/16 (8) - 3/8
1/8 - 1/4	5/16 (8) - 1/2
5/32 (4) - 10/32	3/8 - 1/8
5/32 (4) - 1/8	3/8 - 1/4
5/32 (4) - 1/4	3/8 - 3/8
1/4 - 10/32	3/8 - 1/2
1/4 - 1/8	1/2 - 1/8
1/4 - 1/4	1/2 - 1/4
1/4 - 3/8	1/2 - 3/8
5/16 (8) - 1/8	1/2 - 1/2

### 89010

STRAIGHT MALE ADAPTOR  
WITH EXAGON EMBEDDED



5/32 (4) - 1/8
5/16 (8) - 1/8
5/16 (8) - 1/4

### 89030

STRAIGHT FEMALE ADAPTOR (NPTF)



1/8 - 1/8	1/4 - 1/8
1/8 - 1/4	1/4 - 1/4
5/32 (4) - 1/8	3/8 - 1/4
5/32 (4) - 1/4	3/8 - 3/8

### 89040

STRAIGHT CONNECTOR



1/8	5/16 (8)
5/32 (4)	3/8 - 1/4
1/4 - 5/32	3/8 - 1/2
1/4	3/8
3/16 (5)	1/2

**89050**  
BULKHEAD CONNECTOR



1/8 - M10x1	5/16 (8) - M16x1
5/32 (4) - M12x1	3/8 - M20x1
1/4 - M14x1	1/2 - M22x1

**89106**  
ORIENTING ELBOW FEMALE ADAPTOR (NPTF)



5/32 (4) - 1/8	1/4 - 1/4
5/32 (4) - 1/4	3/8 - 1/8
1/4 - 1/8	3/8 - 1/4

**89111**  
ORIENTING ELBOW MALE ADAPTOR  
"UNIVERSAL SHORT"



1/8 - 1/8	5/16 (8) - 1/8	3/8 - 1/2
1/8 - 1/4	5/16 (8) - 1/4	1/2 - 1/4
5/32 (4) - 1/8	5/16 (8) - 3/8	1/2 - 3/8
5/32 (4) - 1/4	5/16 (8) - 1/2	1/2 - 1/2
1/4 - 1/8	3/8 - 1/8	
1/4 - 1/4	3/8 - 1/4	
1/4 - 3/8	3/8 - 3/8	

**89116**  
ORIENTING ELBOW MALE ADAPTOR  
(PARALLEL)



1/8 - 10/32
5/32 (4) - 10/32
1/4 - 10/32

**89130**  
ELBOW CONNECTOR



1/8
5/32 (4)
1/4
5/16 (8)
3/8
1/2

**89211**  
ORIENTING TEE MALE ADAPTOR  
"UNIVERSAL SHORT" - CENTRE LEG



1/8 - 1/8	1/4 - 3/8	3/8 - 3/8
1/8 - 1/4	5/16 (8) - 1/8	3/8 - 1/2
5/32 (4) - 1/8	5/16 (8) - 1/4	1/2 - 1/4
5/32 (4) - 1/4	5/16 (8) - 3/8	1/2 - 3/8
1/4 - 1/8	3/8 - 1/8	1/2 - 1/2
1/4 - 1/4	3/8 - 1/4	

**89216**  
ORIENTING TEE MALE ADAPTOR (PARALLEL)  
CENTRE LEG



1/8 - 10/32
5/32 (4) - 10/32
1/4 - 10/32

**89223**  
ORIENTING TEE MALE ADAPTOR "UNIVERSAL  
SHORT" OFF - SET LEG



1/8 - 1/8	5/16 (8) - 3/8
1/8 - 1/4	3/8 - 1/8
5/32 (4) - 1/8	3/8 - 1/4
5/32 (4) - 1/4	3/8 - 3/8
1/4 - 1/8	3/8 - 1/2
1/4 - 1/4	1/2 - 1/4
1/4 - 3/8	1/2 - 3/8
5/16 (8) - 1/8	1/2 - 1/2
5/16 (8) - 1/4	

**89226**  
ORIENTING TEE MALE ADAPTOR (PARALLEL)  
OFF - SET LEG



1/8 - 10/32
5/32 (4) - 10/32
1/4 - 10/32

**89230**  
TEE CONNECTOR



1/8	5/16 (8)
5/32 (4)	3/8
1/4	1/2

**89310**  
Y CONNECTOR



1/8	5/16 (8)
5/32 (4)	3/8
1/4	

**89500**  
SINGLE BANJO BODY



1/8 - 1/8	1/4 - 1/4	3/8 - 1/4
5/32 (4) - 10/32	5/16 (8) - 1/8	3/8 - 3/8
5/32 (4) - 1/8	5/16 (8) - 1/4	1/2 - 3/8
1/4 - 1/8	5/16 (8) - 3/8	1/2 - 1/2

**88610**  
POLYAMIDE PLUG



1/8	5/16 (8)
5/32 (4)	3/8
1/4	1/2

**89700**  
REDUCER



1/4 - 1/8	5/32 (4)	1/2 - 1/4
1/4 - 5/32 (4)	3/8 - 1/4	1/2 - 3/8
5/16 (8) -	3/8 - 5/16 (8)	

**50980**  
SECURITY CLIPS



5/32 (4)	3/8 (10)
1/4 (6)	1/2 (12)
5/16 (8)	

**50006**  
THREAD PACKING FOR THE "UNIVERSAL SHORT"  
TAPER THREADS



1/8
1/4
3/8
1/2

# Serie 58000

## HIGH PRESSURE PUSH-IN FITTINGS



### Application

- Lubrication systems
- Heavy Industry, Railways
- Vehicles (Truck, Bus, Farming)



### Component Parts and Materials

- Nickel-plated Brass Collet and body
- HNBR O-RING Seal



### Pressures

- 0 bar (0 MPa)** Minimum pressure
- 150 bar (15 MPa)** Maximum pressure with fluids
- \* 30 bar (3 MPa)** Maximum pressure with air



### Temperatures

- 30 °C
- + 150 °C



### Reference Standard

1907/2006  
REACH ✓

2011/65/CE  
RoHS ✓

97/23/CE  
(PED)

SILICON  
FREE



### Connection Tubes

Plastic tubes:

- \* PA6, PA11, PA12, Polyethylene, \*Polyurethane, PTFE, FEP.

*\*For Polyurethane hoses it is required a minimum hardness of 98 shore.*



### Threads

- Tapered gas in conformity with ISO7.1, BS 21, DIN 2999.
- Metric Tapered in conformity with UNI 7707.



### Fluids

- Oil
- Water
- Grease

### 58000

STRAIGHT MALE ADAPTOR (TAPER)



4 - M6x1	6 - M6x1
4 - M8x1	6 - M8x1
4 - M10x1	6 - M10x1
4 - 1/8	6 - 1/8

### 58040

STRAIGHT CONNECTOR



4  
6

### 58100

ELBOW MALE ADAPTOR (TAPER)



4 - M6x1	6 - M6x1
4 - M8x1	6 - M8x1
4 - M10x1	6 - M10x1
4 - 1/8	6 - 1/8

### 58111

ORIENTING ELBOW MALE ADAPTOR (TAPER)



4 - M6x1	6 - M6x1
4 - M8x1	6 - M8x1
4 - M10x1	6 - M10x1
4 - 1/8	6 - 1/8

### TB66

POLYAMIDE SEMIRIGID TUBE

New



	□	∅ Ext.	∅ Int.
TB66 00 420	NT	4	2
TB66 00 630	NT	6	3

Table of pressure values expressed in% as a function of temperature.

20°	30°	40°	50°	60°	70°	80°
100%	83%	72%	64%	58%	52%	47%



### Temperatures

- 0 °C
- + 100 °C



# Serie 1000

## PUSH-ON FITTINGS



### Application

- Compressed Air
- Pneumatic Automation
- Industrial Cooling
- Inert Gases, Steam
- Inkjet, Printing
- Vacuum



### Component Parts and Materials

- Nickel-plated Brass Nut and body
- NBR O-RING Seals



### Pressures and Temperatures

The working pressures and working temperatures depend on which type of tube is used, for this reason, the values must be determined in accordance with the tube's features.



For the "orienting and thread with O-RING" fittings, the values are:  
**- 20 °C / + 80 °C**



### Reference Standard

1907/2006  
**REACH** ✓

2011/65/CE  
**RoHS** ✓

97/23/CE  
**(PED)**

**SILICON FREE**



### Connection Tubes

Plastic tubes:

PA6, PA11, PA12, Polyethylene, \*Polyurethane, PTFE, FEP.

*\*For Polyurethane hoses it is required a minimum hardness of 98 shore.*



### Threads

- Tapered gas in conformity with ISO7.1, BS 21, DIN 2999.
- Parallel gas in conformity with ISO 228 Class A.
- Metric in conformity with ISO R/262.



### Fluids

- Compressed air
- Fluids and liquids compatible with the connection.

#### 1000 STRAIGHT MALE ADAPTOR (TAPER)



4/2.7 - 1/8	8/6 - 1/4	10/8 - 1/2
5/3 - 1/8	8/6 - 3/8	12/10 - 3/8
6/4 - 1/8	8/6 - 1/2	12/10 - 1/2
6/4 - 1/4	10/8 - 1/8	15/12.5 - 1/2
6/4 - 3/8	10/8 - 1/4	
8/6 - 1/8	10/8 - 3/8	

#### 1010 ORIENTING STRAIGHT MALE ADAPTOR (TAPER)



6/4 - 1/8	8/6 - 1/4	12/8 - 3/8
6/4 - 1/4	10/6.5 - 1/4	12/10 - 3/8
8/6 - 1/8	10/8 - 1/4	

#### 1015 ORIENTING STRAIGHT MALE ADAPTOR (PARALLEL)



6/4 - 1/8	8/6 - 1/4	12/8 - 3/8
6/4 - 1/4	10/6.5 - 1/4	12/10 - 3/8
8/6 - 1/8	10/8 - 1/4	

#### 1020 STRAIGHT MALE ADAPTOR (PARALLEL)



4/2.7 - 1/8	8/6 - 1/8	10/8 - 3/8
5/3 - 1/8	8/6 - 1/4	10/8 - 1/2
6/4 - 1/8	8/6 - 3/8	12/10 - 3/8
6/4 - 1/4	8/6 - 1/2	12/10 - 1/2
6/4 - 3/8	10/8 - 1/8	15/12.5 - 1/2
6/4 - 1/2	10/8 - 1/4	

#### 1021 STRAIGHT MALE ADAPTOR WITH METRIC THREAD



4/2.7 - M5	5/3 - M6	6/4 - M12x1
4/2.7 - M6	6/4 - M5	6/4 - M12x1.25
5/3 - M5	6/4 - M6	6/4 - M12x1.5

#### 1025 STRAIGHT MALE ADAPTOR (TAPER) + NUT WITH SPRING



6/4 - 1/8	8/6 - 3/8	10/8 - 3/8
6/4 - 1/4	8/6 - 1/2	10/8 - 1/2
8/6 - 1/8	10/8 - 1/8	12/10 - 3/8
8/6 - 1/4	10/8 - 1/4	12/10 - 1/2

#### 1026 ORIENTING STRAIGHT MALE ADAPTOR (TAPER) + NUT WITH SPRING



6/4 - 1/8	8/6 - 1/4	12/8 - 3/8
6/4 - 1/4	10/6.5 - 1/4	12/10 - 3/8
8/6 - 1/8	10/8 - 1/4	

#### 1027 ORIENTING STRAIGHT MALE ADAPTOR (PARALLEL) + NUT WITH SPRING



6/4 - 1/8	8/6 - 1/4	12/8 - 3/8
6/4 - 1/4	10/6.5 - 1/4	12/10 - 3/8
8/6 - 1/8	10/8 - 1/4	

**1028**  
STRAIGHT MALE ADAPTOR (PARALLEL) +  
NUT WITH SPRING



6/4 - 1/8	8/6 - 1/4	10/8 - 3/8
6/4 - 1/4	8/6 - 3/8	10/8 - 1/2
6/4 - 3/8	8/6 - 1/2	12/10 - 3/8
6/4 - 1/2	10/8 - 1/8	12/10 - 1/2
8/6 - 1/8	10/8 - 1/4	

**1029**  
STRAIGHT MALE ADAPTOR WITH METRIC  
THREAD + NUT WITH SPRING



6/4 - M12x1
6/4 - M12x1.25
6/4 - M12x1.5

**1030**  
STRAIGHT FEMALE ADAPTOR



6/4 - 1/8	8/6 - 1/4	10/8 - 3/8
6/4 - 1/4	8/6 - 3/8	10/8 - 1/2
6/4 - 3/8	8/6 - 1/2	12/10 - 3/8
8/6 - 1/8	10/8 - 1/4	

**1035**  
STRAIGHT FEMALE ADAPTOR +  
NUT WITH SPRING



6/4 - 1/8	8/6 - 1/4	10/8 - 3/8
6/4 - 1/4	8/6 - 3/8	10/8 - 1/2
6/4 - 3/8	8/6 - 1/2	12/10 - 3/8
8/6 - 1/8	10/8 - 1/4	

**1040**  
STRAIGHT CONNECTOR



4/2.7	8/6 - 6/4	10/8
5/3	8/6	12/10
6/4 - 5/3	10/8 - 6/4	15/12.5
6/4	10/8 - 8/6	

**1050**  
BULKHEAD CONNECTOR



4/2.7 - M6x0.5	10/8x6/4 - M14x1
5/3 - M7x0.75	10/8x8/6 - M14x1
6/4x5/3 - M10x1	10/8 - M14x1
6/4 - M10x1	12/10 - M16x1
8/6x6/4 - M12x1	15/12.5 - M20x1
8/6 - M12x1	

**1100**  
ELBOW MALE ADAPTOR (TAPER)



4/2.7 - 1/8	8/6 - 1/4	10/8 - 1/2
5/3 - 1/8	8/6 - 3/8	12/10 - 3/8
6/4 - 1/8	8/6 - 1/2	12/10 - 1/2
6/4 - 1/4	10/8 - 1/8	15/12.5 - 1/2
6/4 - 3/8	10/8 - 1/4	
8/6 - 1/8	10/8 - 3/8	

**1101**  
ELBOW MALE ADAPTOR WITH METRIC THREAD



6/4 - M12x1
6/4 - M12x1.25
6/4 - M12x1.5

**1110**  
ORIENTING ELBOW MALE ADAPTOR (TAPER)



4/2.7 - 1/8	8/6 - 1/8
6/4 - 1/8	8/6 - 1/4
6/4 - 1/4	10/8 - 1/4

**1115**  
ORIENTING ELBOW MALE ADAPTOR (PARALLEL)



4/2.7 - 1/8	8/6 - 1/8
6/4 - 1/8	8/6 - 1/4
6/4 - 1/4	10/8 - 1/4

**1120**  
ELBOW FEMALE ADAPTOR



5/3 - 1/8	8/6 - 1/4
6/4 - 1/8	10/8 - 1/4
6/4 - 1/4	10/8 - 3/8
8/6 - 1/8	

**1130**  
ELBOW CONNECTOR



4/2.7	8/6 - 6/4	12/10
5/3	8/6	15/12.5
6/4	10/8	

**1200**  
TEE MALE ADAPTOR (TAPER) - CENTRE LEG



4/2.7 - 1/8	8/6 - 1/8	10/8 - 3/8
5/3 - 1/8	8/6 - 1/4	12/10 - 3/8
6/4 - 1/8	10/8 - 1/8	15/12.5 - 1/2
6/4 - 1/4	10/8 - 1/4	

**1210**  
ORIENTING TEE MALE ADAPTOR (TAPER)  
CENTRE LEG



6/4 - 1/8	8/6 - 1/4
6/4 - 1/4	10/8 - 1/4
8/6 - 1/8	

**1215**  
ORIENTING TEE MALE ADAPTOR (PARALLEL)  
CENTRE LEG



6/4 - 1/8	8/6 - 1/4
6/4 - 1/4	10/8 - 1/8
8/6 - 1/8	10/8 - 1/4

**1220**  
TEE MALE ADAPTOR (TAPER) - OFF SET LEG



5/3 - 1/8	8/6 - 1/4	12/10 - 3/8
6/4 - 1/8	10/8 - 1/8	15/12.5 - 1/2
6/4 - 1/4	10/8 - 1/4	
8/6 - 1/8	10/8 - 3/8	

**1230**  
TEE CONNECTOR



4/2.7	8/6	12/10
5/3	10/8 - 6/4	15/12.5
6/4	10/8 - 8/6	
8/6 - 6/4	10/8	

**1300**  
EQUAL CROSS CONNECTOR



5/3	10/8
6/4	12/10
8/6	15/12.5

**51410**  
BANJO STEM SINGLE



M5	3/8
M6	1/2
1/8	M12x1.5
1/4	

**51420**  
BANJO STEM DOUBLE



1/8	1/2
1/4	M12x1.5
3/8	

**51430**  
BANJO STEM TRIPLE



1/8  
1/4  
3/8  
1/2

**51440**  
MALE - FEMALE BANJO STEM SINGLE



1/8 - 1/8  
1/4 - 1/4  
3/8 - 3/8

**1500**  
SINGLE BANJO BODY



4/2.7 - M5	6/4 - 1/8	10/8 - 1/8
4/2.7 - M6	6/4 - 1/4	10/8 - 1/4
4/2.7 - 1/8	6/4 - 3/8	10/8 - 3/8
5/3 - M5	8/6 - 1/8	10/8 - 1/2
5/3 - 1/8	8/6 - 1/4	12/10 - 3/8
6/4 - M5	8/6 - 3/8	12/10 - 1/2
6/4 - M6	8/6 - 1/2	15/12.5 - 1/2

**1510**  
DOUBLE BANJO BODY



4/2.7 - M5	6/4 - 3/8	10/8 - 3/8
4/2.7 - 1/8	8/6 - 1/8	10/8 - 1/2
5/3 - M5	8/6 - 1/4	12/10 - 3/8
5/3 - 1/8	8/6 - 3/8	12/10 - 1/2
6/4 - M5	8/6 - 1/2	15/12.5 - 1/2
6/4 - 1/8	10/8 - 1/8	
6/4 - 1/4	10/8 - 1/4	

**LG 410**  
BANJO STEM SINGLE LIGHT



M5  
M6

**LG 500**  
SINGLE BANJO BODY LIGHT



4/2.7 - M5	6/4 - M5
4/2.7 - M6	6/4 - M6
5/3 - M5	

**1600**  
ALUMINIUM WASHER



M5	3/8
1/8	1/2
1/4	M12

**1610**  
PA66 NOTCHED-WASHER



M3	1/8	1/2
M5	1/4	3/4
M6	3/8	1"

**1612**  
STEEL AND NBR BIMATERIAL WASHER



1/8	1/2
1/4	3/4
3/8	1"

**1613**  
STEEL AND NBR CENTERING BIMATERIAL WASHER



1/8	1/2
1/4	3/4
3/8	1"

**1700**  
LOCKING NUT



4/2.7 - M6x0.5	8/6 - M12x1
5/3 - M7x0.75	10/8 - M14x1
6/4 - M8x0.75	12/10 - M16x1
6/4 - M10x1	15/12.5 - M20x1

**1710**  
LOCKING NUT WITH SPRING



6/4 - M10x1	10/8 - M14x1
8/6 - M12x1	12/10 - M16x1

**1750**  
TECHNOPOLYMER PIPE CUTTER



**8610**  
POLYAMIDE PLUG



4	8
5	10
6	12

# Serie Function

## FUNCTION FITTINGS



### ORIENTING FLOW REGULATOR



#### Application

- Pneumatic automation
- Automotive process
- Food & Beverage
- Fluidtechnology
- Vacuum



#### Reference Standard

1907/2006  
REACH ✓

2011/65/CE  
RoHS ✓

97/23/CE  
(PED)

SILICON  
FREE



#### Pressures

**1 bar (0.1 MPa)**  
**10 bar (1 MPa)**



#### Connection Tubes

Plastic tubes:

PA6, PA11, PA12, Polyethylene, \*Polyurethane, PTFE, FEP.

*\*For Polyurethane hoses it is required a minimum hardness of 98 shore.*



#### Temperatures

**- 20 °C**  
**+ 80 °C**



#### Threads

- "UNIVERSAL SHORT" Threads (See p. 18).
- Metric in conformity with ISO R/262.
- Parallel gas in conformity with ISO 228 Class A.



#### Fluids

- Compressed air

LEGEND



Screwdriver regulation



Manual regulation

#### 50901

ORIENTING FLOW REGULATOR FOR CYLINDER  
"UNIVERSAL SHORT"



3 - M5	6 - M5	10 - 1/4
4 - M5	6 - 1/8	10 - 3/8
4 - 1/8	6 - 1/4	12 - 3/8
5 - M5	8 - 1/8	12 - 1/2
5 - 1/8	8 - 1/4	14 - 1/2
5 - 1/4	8 - 3/8	

#### 50910

ORIENTING FLOW REGULATOR FOR VALVE  
"UNIVERSAL SHORT"



3 - M5	6 - M5	10 - 1/4
4 - M5	6 - 1/8	10 - 3/8
4 - 1/8	6 - 1/4	12 - 3/8
5 - M5	8 - 1/8	12 - 1/2
5 - 1/8	8 - 1/4	14 - 1/2
5 - 1/4	8 - 3/8	

#### 50920

ORIENTING BI-DIRECTIONAL FLOW  
REGULATOR "UNIVERSAL SHORT"



3 - M5	6 - M5	10 - 1/4
4 - M5	6 - 1/8	10 - 3/8
4 - 1/8	6 - 1/4	12 - 3/8
5 - M5	8 - 1/8	12 - 1/2
5 - 1/8	8 - 1/4	14 - 1/2
5 - 1/4	8 - 3/8	

#### 50905

ORIENTING FLOW REGULATOR FOR CYLINDER  
"UNIVERSAL SHORT"



3 - M5	6 - 1/8	12 - 3/8
4 - M5	6 - 1/4	12 - 1/2
4 - 1/8	8 - 1/8	14 - 1/2
5 - M5	8 - 1/4	
5 - 1/8	8 - 3/8	
5 - 1/4	10 - 1/4	
6 - M5	10 - 3/8	

**50915**  
ORIENTING FLOW REGULATOR FOR VALVE  
"UNIVERSAL SHORT"



3 - M5	6 - M5	10 - 1/4
4 - M5	6 - 1/8	10 - 3/8
4 - 1/8	6 - 1/4	12 - 3/8
5 - M5	8 - 1/8	12 - 1/2
5 - 1/8	8 - 1/4	14 - 1/2
5 - 1/4	8 - 3/8	

**50925**  
ORIENTING BI-DIRECTIONAL FLOW  
REGULATOR "UNIVERSAL SHORT"



3 - M5	6 - M5	10 - 1/4
4 - M5	6 - 1/8	10 - 3/8
4 - 1/8	6 - 1/4	12 - 3/8
5 - M5	8 - 1/8	12 - 1/2
5 - 1/8	8 - 1/4	14 - 1/2
5 - 1/4	8 - 3/8	

**55900**  
ORIENTING FLOW REGULATOR FOR CYLINDER  
"UNIVERSAL SHORT"



4 - M5	6 - M5	8 - 3/8
4 - 1/8	6 - 1/8	10 - 3/8
5 - M5	6 - 1/4	12 - 3/8
5 - 1/8	8 - 1/8	12 - 1/2
5 - 1/4	8 - 1/4	

**55910**  
ORIENTING FLOW REGULATOR FOR VALVE  
"UNIVERSAL SHORT"



4 - M5	6 - M5	8 - 3/8
4 - 1/8	6 - 1/8	10 - 3/8
5 - M5	6 - 1/4	12 - 3/8
5 - 1/8	8 - 1/8	12 - 1/2
5 - 1/4	8 - 1/4	

**55920**  
ORIENTING BI-DIRECTIONAL FLOW  
REGULATOR "UNIVERSAL SHORT"



4 - M5	6 - M5	8 - 3/8
4 - 1/8	6 - 1/8	10 - 3/8
5 - M5	6 - 1/4	12 - 3/8
5 - 1/8	8 - 1/8	12 - 1/2
5 - 1/4	8 - 1/4	

**55905**  
ORIENTING FLOW REGULATOR FOR CYLINDER  
"UNIVERSAL SHORT"



4 - M5	6 - M5	8 - 3/8
4 - 1/8	6 - 1/8	10 - 3/8
5 - M5	6 - 1/4	12 - 3/8
5 - 1/8	8 - 1/8	12 - 1/2
5 - 1/4	8 - 1/4	

**55915**  
ORIENTING FLOW REGULATOR FOR VALVE  
"UNIVERSAL SHORT"



4 - M5	6 - M5	8 - 3/8
4 - 1/8	6 - 1/8	10 - 3/8
5 - M5	6 - 1/4	12 - 3/8
5 - 1/8	8 - 1/8	12 - 1/2
5 - 1/4	8 - 1/4	

**55925**  
ORIENTING BI-DIRECTIONAL FLOW  
REGULATOR "UNIVERSAL SHORT"



4 - M5	6 - M5	8 - 3/8
4 - 1/8	6 - 1/8	10 - 3/8
5 - M5	6 - 1/4	12 - 3/8
5 - 1/8	8 - 1/8	12 - 1/2
5 - 1/4	8 - 1/4	

**55902** New  
ORIENTING FLOW REGULATOR FOR CYLINDER  
(PARALLEL)



4 - 1/8	8 - 1/8	10 - 3/8
6 - 1/8	8 - 1/4	12 - 3/8
6 - 1/4	8 - 3/8	12 - 1/2

**55912** New  
ORIENTING FLOW REGULATOR FOR VALVE  
(PARALLEL)



4 - 1/8	8 - 1/8	10 - 3/8
6 - 1/8	8 - 1/4	12 - 3/8
6 - 1/4	8 - 3/8	12 - 1/2

**55922** New  
ORIENTING BI-DIRECTIONAL FLOW  
REGULATOR (PARALLEL)



4 - 1/8	8 - 1/8	10 - 3/8
6 - 1/8	8 - 1/4	12 - 3/8
6 - 1/4	8 - 3/8	12 - 1/2

**55906** New  
ORIENTING FLOW REGULATOR FOR CYLINDER  
(PARALLEL)



6 - 1/4	10 - 3/8
8 - 1/8	12 - 3/8
8 - 1/4	12 - 1/2
8 - 3/8	

**55916** New  
ORIENTING FLOW REGULATOR FOR VALVE  
(PARALLEL)



6 - 1/4	10 - 3/8
8 - 1/8	12 - 3/8
8 - 1/4	12 - 1/2
8 - 3/8	

**55926** New  
ORIENTING BI-DIRECTIONAL FLOW  
REGULATOR (PARALLEL)



6 - 1/4	10 - 3/8
8 - 1/8	12 - 3/8
8 - 1/4	12 - 1/2
8 - 3/8	

**56900** New  
ORIENTING FLOW REGULATOR FOR CYLINDER



4 - M5
6 - M5

**56910** New  
ORIENTING FLOW REGULATOR FOR VALVE



4 - M5
6 - M5

**56920** New  
ORIENTING BI-DIRECTIONAL FLOW  
REGULATOR



4 - M5
6 - M5

**56935** New  
ORIENTING FLOW REGULATOR FOR CYLINDER



4 - M5
6 - M5
4 - 1/8
6 - 1/8

**56945** New  
ORIENTING FLOW REGULATOR FOR VALVE



4 - M5
6 - M5
4 - 1/8
6 - 1/8

**56955** New  
ORIENTING BI-DIRECTIONAL FLOW  
REGULATOR



4 - M5
6 - M5
4 - 1/8
6 - 1/8



**57901**  
ORIENTING FLOW REGULATOR FOR CYLINDER  
"UNIVERSAL SHORT"



4 - M5	6 - 1/8	10 - 3/8
4 - 1/8	6 - 1/4	12 - 3/8
5 - M5	8 - 1/8	12 - 1/2
5 - 1/8	8 - 1/4	14 - 1/2
5 - 1/4	8 - 3/8	
6 - M5	10 - 1/4	

**57910**  
ORIENTING FLOW REGULATOR FOR VALVE  
"UNIVERSAL SHORT"



4 - M5	6 - 1/8	10 - 3/8
4 - 1/8	6 - 1/4	12 - 3/8
5 - M5	8 - 1/8	12 - 1/2
5 - 1/8	8 - 1/4	14 - 1/2
5 - 1/4	8 - 3/8	
6 - M5	10 - 1/4	

**57920**  
ORIENTING BI-DIRECTIONAL FLOW  
REGULATOR "UNIVERSAL SHORT"



4 - M5	6 - 1/8	10 - 3/8
4 - 1/8	6 - 1/4	12 - 3/8
5 - M5	8 - 1/8	12 - 1/2
5 - 1/8	8 - 1/4	14 - 1/2
5 - 1/4	8 - 3/8	
6 - M5	10 - 1/4	

**57905**  
ORIENTING FLOW REGULATOR FOR CYLINDER  
"UNIVERSAL SHORT"



4 - M5	6 - 1/8	10 - 3/8
4 - 1/8	6 - 1/4	12 - 3/8
5 - M5	8 - 1/8	12 - 1/2
5 - 1/8	8 - 1/4	14 - 1/2
5 - 1/4	8 - 3/8	
6 - M5	10 - 1/4	

**57915**  
ORIENTING FLOW REGULATOR FOR VALVE  
"UNIVERSAL SHORT"



4 - M5	6 - 1/8	10 - 3/8
4 - 1/8	6 - 1/4	12 - 3/8
5 - M5	8 - 1/8	12 - 1/2
5 - 1/8	8 - 1/4	14 - 1/2
5 - 1/4	8 - 3/8	
6 - M5	10 - 1/4	

**57925**  
ORIENTING BI-DIRECTIONAL FLOW  
REGULATOR "UNIVERSAL SHORT"



4 - M5	6 - 1/8	10 - 3/8
4 - 1/8	6 - 1/4	12 - 3/8
5 - M5	8 - 1/8	12 - 1/2
5 - 1/8	8 - 1/4	14 - 1/2
5 - 1/4	8 - 3/8	
6 - M5	10 - 1/4	

**FLOW REGULATORS VALVES 8900 SERIES**

**8900**  
FLOW REGULATOR FOR CYLINDER



M5
1/8
1/4
3/8
1/2

**8910**  
FLOW REGULATOR FOR VALVE



M5
1/8
1/4
3/8
1/2

**8920**  
BI-DIRECTIONAL FLOW REGULATOR



M5
1/8
1/4
3/8
1/2

**8905**  
FLOW REGULATOR FOR CILINDER



M5
1/8
1/4
3/8
1/2

**8915**  
FLOW REGULATOR FOR VALVE



M5
1/8
1/4
3/8
1/2

**8925**  
BL-DIRECTIONAL FLOW REGULATOR



M5
1/8
1/4
3/8
1/2

**1500**  
SINGLE BANJO BODY  
(ADJUSTABLE RESTRICTOR VALVES M5)



4/2.7 - M6
6/4 - M6

**1500**  
SINGLE BANJO BODY



4/2.7 - 1/8	8/6 - 1/4	10/8 - 1/2
5/3 - 1/8	8/6 - 3/8	12/10 - 3/8
6/4 - 1/8	8/6 - 1/2	12/10 - 1/2
6/4 - 1/4	10/8 - 1/8	15/12.5 - 1/2
6/4 - 3/8	10/8 - 1/4	
8/6 - 1/8	10/8 - 3/8	

**50505**  
SINGLE BANJO BODY  
(ADJUSTABLE RESTRICTOR VALVES M5)



3 - M6
4 - M6
5 - M6
6 - M6

**50500**  
SINGLE BANJO BODY



4 - 1/8	8 - 1/8	12 - 3/8
5 - 1/8	8 - 1/4	12 - 1/2
5 - 1/4	8 - 3/8	14 - 1/2
6 - 1/8	10 - 1/4	
6 - 1/4	10 - 3/8	

**57505**  
SINGLE BANJO BODY  
(ADJUSTABLE RESTRICTOR VALVES M5)



4 (5/32) - M6
5 - M6
6 - M6

**57500**  
SINGLE BANJO BODY



4 - 1/8	8 - 1/8	12 - 3/8
5 - 1/8	8 - 1/4	12 - 1/2
5 - 1/4	8 - 3/8	14 - 1/2
6 - 1/8	10 - 1/4	
6 - 1/4	10 - 3/8	

**89505**  
SINGLE BANJO BODY  
(ADJUSTABLE RESTRICTOR VALVES M5)



5/32 (4) - M6  
1/8 - M6  
1/4 - M6

**6090**  
FEMALE SINGLE BANJO BODY



1/8  
1/4  
3/8

**IN LINE ADJUSTABLE RESTRICTOR VALVES**



**Component Parts and Materials**

- Nickel-Plated Brass Nipple
- Technopolymeric Body
- NBR O-Ring seal



**Temperatures**

- 20 °C  
+ 80 °C



**Pressures**

1 bar (0.1 MPa)  
10 bar (1 MPa)



**Fluids**

- Compressed air



**Reference Standard**

1907/2006 REACH ✓	2011/65/CE RoHS ✓	97/23/CE (PED)	SILICON FREE
----------------------	----------------------	-------------------	-----------------



**Connection Tubes**

Plastic tubes:  
PA6, PA11, PA12, Polyethylene, \*Polyurethane, PTFE, FEP.  
*\*For Polyurethane hoses it is required a minimum hardness of 98 shore.*



**Threads**

- "UNIVERSAL SHORT" Threads (See p. 18).

**55940**  
TUBE IN-LINE NEEDLE VALVE  
(UNIDIRECTIONAL FLOW)



4  
6  
8  
10

**55945**  
MALE "UNIVERSAL SHORT"-TUBE IN-LINE  
FLOW CONTROL (CONTROLLED FLOW OUT)



4 - 1/8      8 - 3/8  
6 - 1/8      10 - 3/8  
6 - 1/4      10 - 1/2  
8 - 1/4

**55950**  
MALE "UNIVERSAL SHORT"- TUBE IN-LINE  
FLOW CONTROL (CONTROLLED FLOW IN)



4 - 1/8      8 - 3/8  
6 - 1/8      10 - 3/8  
6 - 1/4      10 - 1/2  
8 - 1/4

**55955**  
TUBE IN-LINE NEEDLE VALVE  
(BIDIRECTIONAL FLOW)



4  
6  
8  
10

**55960**  
MALE "UNIVERSAL SHORT"- TUBE IN-LINE  
FLOW CONTROL (BIDIRECTIONAL FLOW)



4 - 1/8      8 - 3/8  
6 - 1/8      10 - 3/8  
6 - 1/4      10 - 1/2  
8 - 1/4

**IN LINE PRESSURE REGULATOR**



**Component Parts and Materials**

- Nickel-Plated Brass Nipple
- Techopolymeric Body
- NBR O-Ring seal



**Temperatures**

- 20 °C
- + 80 °C



**Inlet Pressures (Set the pressure always uphill)**

- 2 bar (0.2 MPa)**
- 10 bar (1 MPa)**



**Fluids**

- Compressed air



**Reference Standard**

- 1907/2006 REACH ✓
- 2011/65/CE RoHS ✓
- 97/23/CE (PED)
- SILICON FREE



**Connection Tubes**

- Plastic tubes:  
PA6, PA11, PA12, Polyethylene, \*Polyurethane, PTFE, FEP.  
*\*For Polyurethane hoses it is required a minimum hardness of 98 shore.*



**Threads**

- "UNIVERSAL SHORT" Threads (See p. 18).



**Regulation Range**

- 1 ÷ 8 bar (0.1 ÷ 0.8 MPa)**

**55970**  
TUBE IN LINE PRESSURE REGULATOR



6  
8

**55975**  
TUBE - MALE "UNIVERSAL SHORT" IN-LINE PRESSURE REGULATOR



6 - 1/8      8 - 1/4  
6 - 1/4      8 - 3/8

**55980**  
MALE "UNIVERSAL SHORT" - TUBE IN-LINE PRESSURE REGULATOR



6 - 1/8      8 - 1/4  
6 - 1/4      8 - 3/8

**ALUMINIUM FLOW REGULATOR**



**Component Parts and Materials**

- Anodized aluminium Body
- Brass Nipple
- NBR O-Ring seal



**Pressures**

- 1 bar (0,1 MPa)**
- 10 bar (1 MPa)**



**Temperatures**

- 20 °C
- + 80 °C

**8850**  
UNI DIRECTIONAL FLOW REGULATOR



M5  
1/8  
1/4  
3/8  
1/2

**8860**  
BI-DIRECTIONAL FLOW REGULATOR



M5  
1/8  
1/4  
3/8  
1/2

**LOGIC ELEMENTS**



**Component Parts and Materials**

- Anodised aluminium body
- NBR seals
- Internal parts in brass



**Threaded**  
G 1/8



**Nominal orifice**  
2.5 mm



**Pressures**

2 bar (0.2 MPa)  
10 bar (1 MPa)



**Temperatures**

- 10 °C  
+ 60 °C



**6 bar Flow rate (Δp 1 bar)**  
100 NI/min



**Fluids**

- Compressed air

**8870**  
IN-LINE "OR" LOGIC ELEMENT



1/8

**8872**  
IN-LINE "AND" LOGIC ELEMENT



1/8

**QUICK EXHAUST VALVES**



**Component Parts and Materials**

- Nickel-plated Brass Body
- PA66 Flat Seals
- NBR Pad



**Reference Standard**

1907/2006  
REACH ✓

2011/65/CE  
RoHS ✓

97/23/CE  
(PED)

SILICON  
FREE



**Pressures**

0.3 bar (0.03 MPa)  
10 bar (1 MPa)



**Temperatures**

- 20 °C  
+ 80 °C



**Fluids**

- Compressed air



**Threads**

- Parallel gas in conformity with ISO 228.
- Metric in conformity with ISO R/262.

**6050**  
QUICK EXHAUST VALVE



M5 1/2  
1/8 3/4  
1/4 1"  
3/8

**6052**  
PAD FOR QUICK EXHAUST VALVE  
MADE IN NBR



M5 1/2  
1/8 3/4  
1/4 1"  
3/8

**6052**  
PAD FOR QUICK EXHAUST VALVE  
MADE IN POLYURETHANE



1/8  
1/4  
1/2  
3/4

**6053**  
CAP SEAL



M5 1/2  
1/8 3/4  
1/4 1"  
3/8

**SLIDE VALVES**



**Component Parts and Materials**

- Grey anodized Aluminium Sleeve
- Chrome-Nickel plated Brass Stem
- NBR O-RING Seals



**Reference Standard**

1907/2006 REACH ✓  
 2011/65/CE RoHS ✓  
 97/23/CE (PED)  
 SILICON FREE



**Pressures**

**0.3 bar (0.03 MPa)**  
**10 bar (1 MPa)**



**Temperatures**

**- 20 °C**  
**+ 80 °C**



**Fluids**

- Compressed air

**6060**  
SLIDE VALVE



1/8  
1/4  
3/8  
1/2

**UNIDIRECTIONAL VALVES OR NON RETURN VALVES**



**Component Parts and Materials**

- Nickel-plated Brass Body
- NBR O-RING Seals



**Reference Standard**

1907/2006 REACH ✓  
 2011/65/CE RoHS ✓  
 97/23/CE (PED)  
 SILICON FREE



**Pressures**

**2 bar (0.2 MPa)**  
**8 bar (0.8 MPa)**

**Approximate opening pressure:**  
**0.2 bar (0.02 MPa)**



**Threads**

- Parallel gas in conformity with ISO 228.



**Temperatures**

**- 20 °C**  
**+ 80 °C**

**FKM:**

6062	6063	6064
-15 °C	-15 °C	-15 °C
+200 °C	+200 °C	+130 °C



**Fluids**

- Compressed air

**6062**  
FEMALE-FEMALE NON RETURN VALVE



M5  
1/8  
1/4  
3/8  
1/2

**6063**  
MALE-FEMALE NON-RETURN VALVE



M5  
1/8  
1/4  
3/8  
1/2

**6064**  
PUSH-IN CONNECTIONS NON-RETURN VALVE



4  
6  
8

**BLOCK VALVES**



**Component Parts and Materials**

- Nickel-plated Brass Body
- NBR O-RING Seals



**Reference Standard**

1907/2006  
REACH ✓

2011/65/CE  
RoHS ✓

97/23/CE  
(PED)

SILICON  
FREE



**Pressures**

0.3 bar (0.03 MPa)  
10 bar (1 MPa)



**Temperatures**

- 20 °C  
+ 80 °C



**6 bar Flow rate (Δp 1 bar)**

1/8	1/4
750 NI/min	1420 NI/min



**Size**

1/8 - 1/4



**Nominal orifice**

1/8	1/4
Ø 5.5 mm	Ø 8 mm



**Fluids**

- Filtered and lubricated compressed air as well as non lubricated air

**8880**

UNI-DIRECTIONAL BLOCK VALVE



1/8  
1/4

**8890**

BI-DIRECTIONAL BLOCK VALVE



1/8  
1/4

# Serie Ghilux

## BALL VALVES



### Application

- Compressed Air, Tools
- Pneumatic Automation
- Fluidtechnology
- Food & Beverage
- Life & Sciences
- Inert Gases, Vacuum
- Plumbing



### Component Parts and Materials

- Chrome Nickel-plated Brass Body
- PTFE Seats
- NBR Seal O-RING (FKM - EPDM - HNBR if required)



### Pressures

**-0.99 bar (-0.099 MPa)**  
**20 bar (2 MPa)**



### Temperatures

**- 20 °C**  
**+ 80 °C**

FKM	EPDM	HNBR
- 15 °C	- 40 °C	- 30 °C
+ 130 °C	+ 130 °C	+ 130 °C



### Reference Standard

1907/2006 REACH ✓	2011/65/CE RoHS ✓	97/23/CE (PED)	ISO 14743:2004	SILICON FREE
----------------------	----------------------	-------------------	-------------------	-----------------



### Threads

- Tapered gas in conformity with ISO7.1, BS 21, DIN 2999.
- Parallel gas in conformity with ISO 228 Class A.



### Fluids

- Compressed air
- Water
- Oils
- 1st and 2nd family gases at medium pressure.
- 3rd family gases at low pressure.

### 6300

FEMALE RP ISO 7 - FEMALE RP ISO 7 VALVE



1/8 - 1/8	1/2 - 1/2
1/4 - 1/4	3/4 - 3/4
3/8 - 3/8	

### 6310

TAPER MALE R ISO 7 - FEMALE RP ISO 7 VALVE



1/8 - 1/8	3/8 - 3/8
1/4 - 1/8	1/2 - 1/2
1/4 - 1/4	3/4 - 3/4

### 6320

PARALLEL MALE GA ISO 228 - FEMALE RP ISO 7 VALVE



1/8 - 1/8	3/8 - 3/8
1/4 - 1/8	1/2 - 1/2
1/4 - 1/4	3/4 - 3/4

### 6330

TAPER MALE R ISO 7 - PARALLEL MALE GA ISO 228 VALVE



1/8 - 1/8	3/8 - 3/8
1/8 - 1/4	1/2 - 1/2
1/4 - 1/8	3/4 - 3/4
1/4 - 1/4	

### 6340

TUBE - FEMALE RP ISO 7 VALVE



6 - 1/8	10 - 3/8	15 - 1/2
8 - 1/8	12 - 3/8	16 - 3/4
8 - 1/4	14 - 1/2	18 - 3/4

### 6350

TAPER MALE R ISO 7 - TUBE VALVE



1/8 - 6	3/8 - 10	3/4 - 16
1/8 - 8	3/8 - 12	3/4 - 18
1/4 - 6	1/2 - 14	
1/4 - 8	1/2 - 15	

### 6400

FEMALE G ISO 228 - FEMALE G ISO 228 VALVE



1/8 - 1/8	1/2 - 1/2
1/4 - 1/4	3/4 - 3/4
3/8 - 3/8	

### 6410

PARALLEL MALE GA ISO 228 - FEMALE G ISO 228 VALVE



1/8 - 1/8	3/8 - 3/8
1/4 - 1/8	1/2 - 1/2
1/4 - 1/4	3/4 - 3/4

**6420**  
PARALLEL MALE GA ISO 228 - PARALLEL MALE GA ISO 228 VALVE



1/8 - 1/8	3/8 - 1/4	1/2 - 1/2
1/8 - 1/4	3/8 - 3/8	3/4 - 1/2
1/4 - 1/4	1/2 - 3/8	3/4 - 3/4

**6430**  
TUBE - FEMALE G ISO 228 VALVE



6 - 1/8	10 - 3/8	15 - 1/2
8 - 1/8	12 - 3/8	16 - 3/4
8 - 1/4	14 - 1/2	18 - 3/4

**6440**  
PARALLEL MALE GA ISO 228 - TUBE VALVE



1/8 - 6	3/8 - 12	3/4 - 14
1/8 - 8	3/8 - 14	3/4 - 15
1/4 - 6	3/8 - 15	3/4 - 16
1/4 - 8	1/2 - 10	3/4 - 18
1/4 - 10	1/2 - 12	
3/8 - 8	1/2 - 14	
3/8 - 10	1/2 - 15	

**6450**  
TUBE - TUBE VALVE



6 - 6	14 - 10	16 - 14
6 - 8	14 - 12	16 - 15
8 - 8	15 - 10	18 - 14
10 - 8	15 - 12	18 - 15
10 - 10	14 - 14	18 - 16
10 - 12	15 - 14	18 - 18
12 - 12	15 - 15	

**6460**  
MILLED NUT - TAPER MALE R ISO 7 VALVE

**NO GAS**



1/8  
1/4  
3/8

**6470**  
MILLED NUT - FEMALE G ISO 228 VALVE

**NO GAS**



1/8  
1/4

**6490**  
FOOT MOUNTED FEMALE-FEMALE VALVE



1/4 - 1/4  
3/8 - 3/8

**6500**  
FOOT MOUNTED TUBE-TUBE VALVE



8 - 8

**6540**  
ELBOW PARALLEL MALE GA ISO 228 - TAPER MALE R ISO 7 VALVE



1/4 - 1/4

**6560**  
PUSH-IN CONNECTIONS VALVE

**NO GAS**



4 - 4	10 - 10
6 - 6	12 - 12
8 - 8	

**6570**  
MALE R ISO 7 TAPER - PUSH-FIT CONNECTIONS VALVE

**NO GAS**



1/8 - 4	1/4 - 6
1/8 - 6	1/4 - 8
1/8 - 8	

**6600**  
EXHAUST HOLE FEMALE G ISO 228 FEMALE G ISO 228 VALVE

**NO GAS**



1/8 - 1/8  
1/4 - 1/4  
3/8 - 3/8

**86300**  
NPTF FEMALE - NPTF FEMALE VALVE



1/8 - 1/8  
1/4 - 1/4  
3/8 - 3/8  
1/2 - 1/2

**86310**  
TAPER NPTF MALE - NPTF FEMALE VALVE



1/8 - 1/8  
1/4 - 1/4  
3/8 - 3/8  
1/2 - 1/2

**SERIE GHINOX MINIBALL VALVES IN STAINLESS STEEL**

**AI SI 316L**



**Pressures**

- 0.99 bar (-0.099 MPa)  
40 bar (4 MPa)



**Temperatures**

- 15 °C Minimum temperature  
+ 150 °C Maximum temperature in continuous  
+ 180 °C Maximum temperature for short term

**66300**  
FEMALE RP ISO 7 - FEMALE RP ISO 7 VALVE



1/8 - 1/8  
1/4 - 1/4

**66310**  
TAPER MALE R ISO 7 - FEMALE RP ISO 7 VALVE



1/8 - 1/8  
1/4 - 1/4



**2-3 WAYS MINIBALL VALVES**

**6700**  
3 WAYS VALVE "L" FEMALE G ISO 228



1/8 - 1/8 - 1/8  
1/4 - 1/4 - 1/4  
3/8 - 3/8 - 3/8

**6710**  
3 WAYS VALVE "T" FEMALE G ISO 228



1/8 - 1/8 - 1/8  
1/4 - 1/4 - 1/4  
3/8 - 3/8 - 3/8

**6720**  
"L" FEMALE G ISO 228 VALVE



1/8 - 1/8  
1/4 - 1/4  
3/8 - 3/8

**6900**  
SHORT HANDLE



A = For valves of 1/8 - 1/4 - 3/8  
B = For valves of 1/2 - 3/4

**6910**  
LONG HANDLE



A = For valves of 1/8 - 1/4 - 3/8  
B = For valves of 1/2 - 3/4

**6915**  
SPINDLE EXTENSION  
(WITH LONG HANDLE, SCREW)



A = For valves of 1/8 - 1/4 - 3/8  
B = For valves of 1/2 - 3/4

**6920**  
COLOURED PLATE



Available colours:  
RO Red  
GI Yellow  
BL Blue  
VE Green  
BN White

A = For valves of 1/8 - 1/4 - 3/8  
B = For valves of 1/2 - 3/4

**6680**  
NUT



6 - 1/8	12 - 3/8	16 - 3/4
8 - 1/4	14 - 1/2	18 - 3/4
10 - 3/8	15 - 1/2	

**10740**  
BRASS OLIVE



6	12
8	15
10	18

**10741**  
BRASS OLIVE



14
16

**10760**  
PTFE OLIVE



6	12
8	15
10	18

**10761**  
PTFE OLIVE



14
16

**MINIBALL VALVES**

**6065**  
MINIBALL VALVE FEMALE  
G ISO 228 - FEMALE G ISO 228

**NO GAS**



1/8	1/2
1/4	3/4
3/8	

**6066**  
MINIBALL VALVE MALE  
G ISO 228 - FEMALE G ISO 228

**NO GAS**



1/8	1/2
1/4	3/4
3/8	

**BALL VALVES**

**6067**  
BALL VALVE, FEMALE G ISO 228 -  
FEMALE G ISO 228



1/2	1*1/4
3/4	1*1/2
1"	2"

**6068**  
GAS BALL VALVE, FEMALE RP ISO7 -  
FEMALE RP ISO7



1/4	3/4	1*1/2
3/8	1"	2"
1/2	1*1/4	

**6069**  
BALL VALVE MALE GA ISO 228 -  
FEMALE G ISO 228



1/2 - 1/2	1*1/4 - 1*1/4
3/4 - 3/4	1*1/2 - 1*1/2
1" - 1"	2" - 2"

**3 WAYS BALL VALVES FEMALE - "T" & "L"**

**6074**  
3 WAYS BALL VALVE "L" FEMALE  
G ISO 228

**New**



1/4"	1"
3/8"	1 - 1/4"
1/2"	1 - 1/2"
3/4"	2"

**6075**  
3 WAYS BALL VALVE "T" FEMALE  
G ISO 228

**New**



1/4"	1"
3/8"	1 - 1/4"
1/2"	1 - 1/2"
3/4"	2"

**Y FILTER**

**6035**  
"Y" FILTER



1/4	1"1/2
3/8	2"
1/2	2"1/2
3/4	3"
1"	4"
1"1/4	

**NO RETURN VALVES**

**6036**  
NON RETURN VALVE



3/8	1"1/4
1/2	1"1/2
3/4	2"
1"	

**6037**  
FINAL VALVE



1/2	1"1/4
3/4	1"1/2
1"	2"

**6038**  
STRECHED NET FILTER



1/2	1"1/4
3/4	1"1/2
1"	2"

# Serie Adapters

## NICKEL-PLATED BRASS ADAPTORS



### Application

- Compressed Air
- Pneumatic Automation
- Industrial water circuits
- Inert Gases, Fluids, Steam
- Vacuum



### Component Parts and Materials

- The main part of these fittings is made in brass and undergo to a nickel-plating process.
- Different materials will be specified in the General catalogue.



### Maximum temperature

+ 300 °C



Size	Maximum Pressure Advised
1/8	150 bar
1/4	100 bar
3/8	75 bar
1/2	50 bar
3/4	85 bar
1"	80 bar



### Reference Standard

1907/2006  
REACH ✓

2011/65/CE  
RoHS ✓

97/23/CE  
(PED)

ISO  
14743:2004

SILICON  
FREE



### Connection Tubes

Tubes and fittings in general.



### Threads

- Tapered gas in conformity with ISO7.1, BS 21, DIN 2999.
- Parallel gas in conformity with ISO 228 Class A.
- Metric in conformity with ISO R/262.



### Fluids

- Water
- Oils
- Compressed air
- Fluids in general for the hydraulic, pneumatic and oildynamic plants etc.

### 2000 NIPPLE (TAPER)



1/8	1/2
1/4	3/4
3/8	1"

### 2010 NIPPLE (PARALLEL)



M5	1/2
1/8	3/4
1/4	1"
3/8	

### 2020 REDUCING NIPPLE (TAPER)



1/8 - 1/4	1/4 - 3/8	1/2 - 3/4
1/8 - 3/8	1/4 - 1/2	3/4 - 1"
1/8 - 1/2	3/8 - 1/2	

### 2030 REDUCING NIPPLE (PARALLEL)



M5 - 1/8	1/4 - 1/2
1/8 - 1/4	3/8 - 1/2
1/8 - 3/8	1/2 - 3/4
1/4 - 3/8	

### 2040 REDUCER (TAPER)



1/8 - 1/8	1/4 - 3/8	1/2 - 1/2
1/8 - 1/4	1/4 - 1/2	1/2 - 3/4
1/8 - 3/8	3/8 - 3/8	
1/4 - 1/4	3/8 - 1/2	

### 2050 REDUCER (PARALLEL)



M5 - 1/8	1/4 - 1/4	3/8 - 1/2
1/8 - 1/8	1/4 - 3/8	1/2 - 1/2
1/8 - 1/4	1/4 - 1/2	
1/8 - 3/8	3/8 - 3/8	

### 2060 TAPER NIPPLE (3 PIECES)



1/8	3/4
1/4	1"
3/8	
1/2	

### 2070 EXTENSION (PARALLEL)



1/8 - 1/8 - L=22	1/4 - 1/4 - L=35
1/8 - 1/8 - L=32	1/4 - 1/4 - L=51
1/8 - 1/8 - L=42	3/8 - 3/8 - L=32
1/8 - 1/8 - L=51	1/2 - 1/2 - L=35
1/4 - 1/4 - L=28	

**2080**  
REDUCER (TAPER)



1/4 - 1/8	1/2 - 3/8	1*1/4 - 1/2
3/8 - 1/8	3/4 - 3/8	1*1/4 - 3/4
1/2 - 1/8	3/4 - 1/2	1*1/4 - 1"
3/8 - 1/4	1" - 1/2	1*1/2 - 1"
1/2 - 1/4	1" - 3/4	2" - 1"

**2090**  
REDUCER (PARALLEL)



1/8 - M5	3/8 - 1/4	3/4 - 3/8
1/4 - 1/8	1/2 - 1/4	3/4 - 1/2
3/8 - 1/8	1/2 - 3/8	
1/2 - 1/8	3/4 - 1/4	

**2092**  
REDUCER (PARALLEL) WITH NBR O-RING



1/8 - M5	3/8 - 1/4	3/4 - 1/4
1/4 - M5	1/2 - 1/8	3/4 - 3/8
1/4 - 1/8	1/2 - 1/4	3/4 - 1/2
3/8 - 1/8	1/2 - 3/8	

**2095**  
REDUCER (PARALLEL)



1/4 - 1/8	3/4 - 1/2
3/8 - 1/4	1" - 3/4
1/2 - 3/8	

**2096**  
NUT



1/8
1/4
3/8
1/2

**2110**  
ORIENTING NIPPLE (TAPER)



1/8
1/4
3/8

**2115**  
ORIENTING NIPPLE (PARALLEL)



1/8
1/4
3/8

**2116** New  
MALE ORIENTING NIPPLE WITH OR (PARALLEL)



1/8	1/2
1/4	3/4
3/8	1"

**3000**  
SLEEVE



M5	1/2
1/8	3/4
1/4	1"
3/8	

**3010**  
REDUCING SLEEVE



M5 - 1/8	1/4 - 3/8	1/2 - 1"
1/8 - 1/4	1/4 - 1/2	3/4 - 1"
1/8 - 3/8	3/8 - 1/2	
1/8 - 1/2	1/2 - 3/4	

**3015**  
MALE PLUG (PARALLEL) WITH EXAGON EMBEDDED AND NBR O-RING



M5	1/2	3/4
1/8	M8x1	1"
1/4	M10x1	
3/8	M12x1,25	

**3015V**  
MALE PLUG (PARALLEL) WITH EXAGON EMBEDDED AND FKM O-RING



M5	3/8
1/8	1/2
1/4	

**3020**  
MALE PLUG (PARALLEL)



M5	1/2
1/8	3/4
1/4	1"
3/8	

**3021**  
MALE PLUG (TAPER)



1/8	1/2
1/4	3/4
3/8	1"

**3025**  
MALE PLUG (TAPER)



1/8
1/4
3/8
1/2

**3026**  
MALE PLUG (PARALLEL)



1/8	1/2
1/4	3/4
3/8	

**3030**  
FEMALE PLUG



1/8
1/4
3/8
1/2

**3040**  
MALE HOSE ADAPTER (TAPER)



4 - 1/8	10 - 1/8	17 - 3/8
6 - 1/8	10 - 1/4	17 - 1/2
6 - 1/4	10 - 3/8	18 - 3/8
7 - 1/8	10 - 1/2	18 - 1/2
7 - 1/4	12 - 1/4	18 - 3/4
8 - 1/8	12 - 3/8	20 - 3/8
8 - 1/4	12 - 1/2	20 - 1/2
8 - 3/8	14 - 3/8	20 - 3/4
9 - 1/8	14 - 1/2	25 - 3/4
9 - 1/4	16 - 3/8	25 - 1"
9 - 3/8	16 - 1/2	
9 - 1/2	16 - 3/4	

**3044**  
MALE HOSE ADAPTER (PARALLEL) WITH O-RING



4.5 - M5	9 - 1/4	14 - 3/8
6 - 1/4	9 - 3/8	14 - 1/2
7 - 1/8	10 - 1/4	13 - 1/2
7 - 1/4	10 - 3/8	17 - 3/8
8 - 1/8	10 - 1/2	17 - 1/2
8 - 1/4	12 - 1/4	19 - 3/4
8 - 3/8	12 - 3/8	20 - 3/4
8 - 1/2	12 - 1/2	25 - 1"
9 - 1/8	13 - 1/2	27 - 1"

**3045**  
MALE HOSE ADAPTER (PARALLEL)



4.5 - M5	8 - 1/4	12 - 3/8
6 - 1/8	9 - 1/8	12 - 1/2
6 - 1/4	9 - 1/4	17 - 3/8
7 - 1/8	9 - 3/8	17 - 1/2
7 - 1/4	9 - 1/2	
8 - 1/8	12 - 1/4	

**3050**  
FEMALE HOSE ADAPTER



6 - 1/8	8 - 1/4	10 - 3/8
6 - 1/4	9 - 1/4	12 - 3/8
7 - 1/8	9 - 3/8	12 - 1/2
7 - 1/4	10 - 1/4	

**3055**  
MALE HOSE ADAPTER ELBOW



6 - 1/8	7 - 1/4
6 - 1/4	9 - 1/4
7 - 1/8	

**3060**  
BULKHEAD CONNECTOR



M5	3/8
1/8	1/2
1/4	3/4

**1704**  
NUT



M10x1	M26x1.5
M16x1.5	M28x1.5
M20x1.5	M33x1.5

**4000**  
FEMALE TEE



1/8	1/2
1/4	3/4
3/8	1"

**4010**  
MALE TEE



1/8	1/2
1/4	3/4
3/8	1"

**4020**  
CENTRE LEG FEMALE TEE



1/8	1/2
1/4	3/4
3/8	1"

**4030**  
OFF SET FEMALE TEE



1/8	1/2
1/4	3/4
3/8	1"

**4040**  
CENTRE LEG MALE TEE



1/8	1/2
1/4	3/4
3/8	1"

**4050**  
OFF SET MALE TEE



M5	1/2
1/8	3/4
1/4	1"
3/8	

**5000**  
MALE ELBOW



M5	1/2
1/8	3/4
1/4	1"
3/8	

**5010**  
FEMALE ELBOW



M5	1/2
1/8	3/4
1/4	1"
3/8	

**5020**  
MALE-FEMALE ELBOW



M5	1/2
1/8	3/4
1/4	1"
3/8	

**5050**  
FEMALE BRACKET FITTING 90°



1/2

**6000**  
CENTRAL MALE Y 90°



1/8
1/4
3/8
1/2

**6010**  
FEMALE Y 90°



1/8
1/4
3/8
1/2

**6020**  
FEMALE EQUAL CROSS



1/8
1/4
3/8
1/2

**6025**  
MALE-FEMALE EQUAL CROSS



1/8
1/4
3/8
1/2

**6030**  
MALE EQUAL CROSS



1/8
1/4
3/8
1/2

**6040**  
ALUMINIUM TEE CROSS



1/8
1/4
3/8
1/2

**6047**  
ALUMINIUM DISTRIBUTION MANIFOLD



1/4 - 1/8 - L=65	3/8 - 1/4 - L=184
1/4 - 1/8 - L=95	3/8 - 1/4 - L=220
1/4 - 1/8 - L=125	1/2 - 3/8 - L=90
1/4 - 1/8 - L=155	1/2 - 3/8 - L=130
1/4 - 1/8 - L=185	1/2 - 3/8 - L=170
3/8 - 1/4 - L=76	1/2 - 3/8 - L=210
3/8 - 1/4 - L=112	1/2 - 3/8 - L=250
3/8 - 1/4 - L=148	

**6048**  
ALUMINIUM DOUBLE DISTRIBUTION MANIFOLD



1/4 - 1/8 - L=65	3/8 - 1/4 - L=184
1/4 - 1/8 - L=95	3/8 - 1/4 - L=220
1/4 - 1/8 - L=125	1/2 - 3/8 - L=90
1/4 - 1/8 - L=155	1/2 - 3/8 - L=130
1/4 - 1/8 - L=185	1/2 - 3/8 - L=170
3/8 - 1/4 - L=76	1/2 - 3/8 - L=210
3/8 - 1/4 - L=112	1/2 - 3/8 - L=250
3/8 - 1/4 - L=148	

**6070**  
MALE-FEMALE ELBOW FITTING



1/8 - 1/8
1/4 - 1/4

**6080**  
MALE-FEMALE-FEMALE TEE FITTING



1/8 - 1/8
1/4 - 1/4

**6090**  
FEMALE SINGLE BANJO BODY



1/8
1/4
3/8

**82241**  
ADAPTER FEMALE BSP - MALE NPTF



1/8 - 1/8
1/4 - 1/4
3/8 - 3/8

**82242**  
ADAPTER FEMALE NPTF - MALE G THREAD



1/8 - 1/8
1/4 - 1/4
3/8 - 3/8
1/2 - 1/2

**7000**  
SILENCER



1/8	1/2
1/4	3/4
3/8	1"

<p><b>7010</b> SILENCER</p>  <p>1/8 1/4 3/8</p> <p>1/2 3/4</p>	<p><b>7020</b> SILENCER WITH WIRE MESH STAINLESS STEEL 304</p>  <p>M5 1/8 1/4 3/8</p> <p>1/2 3/4 1"</p>	<p><b>7030</b> SILENCER</p>  <p>M5 1/8 1/4 3/8</p> <p>1/2 3/4 1"</p>	<p><b>7040</b> SILENCER</p>  <p>1/8 1/4 3/8</p> <p>1/2 3/4</p>
<p><b>7050</b> SILENCER</p>  <p>1/8 1/4 3/8 1/2</p>	<p><b>7060</b> PUSH-ON SILENCER</p>  <p>4 - 5/3 6 - 6/4</p>	<p><b>7070</b> SILENCER MADE IN ACETALIC RESIN WITH PLASTIC SOUNDPROOFING MATERIAL</p>  <p>1/8 1/4 3/8</p> <p>1/2 3/4 1"</p>	<p><b>7080</b> SILENCER MADE IN PA66 WITH FELT</p>  <p>1/8 1/4 3/8</p> <p>1/2 3/4 1"</p>
<p><b>AS7100</b> POROUS POLYETHYLENE SILENCER FOR PUSH-IN</p>  <p>4 6 8</p> <p>10 12</p>	<p><b>7100</b> POROUS POLYETHYLENE SILENCER</p>  <p>M5 1/8 1/4 3/8</p> <p>1/2 3/4 1"</p>	<p><b>7110</b> POROUS POLYETHYLENE RESTRICTOR SILENCER</p>  <p>M5 1/8 1/4</p> <p>3/8 1/2</p>	<p><b>7120</b> PAD SILENCER WITH SLOT FOR SCREWDRIVER</p>  <p>1/8 1/4 3/8</p> <p>1/2 3/4 1"</p>
<p><b>7130</b> SILENCER WITH FILTERING PAD - (TAPER) WITH SLOT FOR SCREWDRIVER</p>  <p>1/8 1/4 3/8</p> <p>1/2 3/4 1"</p>	<p><b>7140</b> INTEGRAL SILENCER WITH SLOT FOR SCREWDRIVER</p>  <p>1/8 1/4 3/8</p> <p>1/2 3/4 1"</p>	<p><b>7150</b> INTEGRAL SILENCER WITH HEXAGONAL WRENCH</p>  <p>1/8 1/4 3/8</p> <p>1/2 3/4 1"</p>	

**SERIE 1800 FITTINGS WITH BAYONET CONNECTION**



Pressures

-0.99 bar (-0.099 MPa)  
15 bar (1.5 MPa)



Temperatures

- 20 °C  
+ 70 °C

**1810**  
FITTING FOR HOSES



For rubber hoses	For braided polyurethane hoses
14/6 - 1/4	10/6 - 1/4
17/8 - 1/4	12/8 - 1/4
19/10 - 1/4	15/10 - 1/4
23/13 - 1/2	

1/8  
1/4  
3/8

**1830**  
MALE BAYONET



**1831**  
FEMALE BAYONET



**1832**  
BAYONET WITH REST



6  
7  
8

9  
10  
12

**1833**  
BAYONET FOR RUBBER HOSE



14 - 6  
17 - 8  
19 - 10

**1840**  
MALE FOR RUBBER HOSE



10/6 - 1/4	15/10 - 1/4	17/10 - 1/4
12/8 - 1/4	17/8 - 1/4	19/10 - 1/4
14/6 - 1/4	17/8 - 3/8	19/10 - 3/8

**1841**  
FEMALE FOR RUBBER HOSE



10/6 - 1/4	15/10 - 1/4	17/10 - 1/4
12/8 - 1/4	17/8 - 1/4	19/10 - 1/4
14/6 - 1/4	17/8 - 3/8	19/10 - 3/8

**1850**  
MALE WITH MILLED NUT



1/8  
1/4  
3/8

**1851**  
FEMALE WITH MILLED NUT



1/4  
3/8

**1852**  
DOUBLE MILLED NUT



1/4

**1853**  
TEE WITH MILLED NUTS



1/4

**1855**  
STRAIGHT FITTING WITH BAYONET CONNECTION + NUT AND SPRING



6/4  
8/6

10/8  
12/10

**1860**  
STRAIGHT FITTING WITH BAYONET CONNECTION + NUT AND SPRING



6/4  
8/6

10/8  
12/10

**1808**  
MILLED NUT



1/4

**1864**  
TIGHTENING SEAL FOR FITTINGS WITH BAYONET CONNECTION



**SERIE 1500 HOSE ADAPTORS FOR PLASTIC TUBES**



Pressures

-0.99 bar (-0.099 MPa)  
10 bar (1 MPa)



Temperatures

- 10 °C  
+ 80 °C

**15000**  
STRAIGHT HOSE MALE ADAPTOR



2 - M5  
3 - M5  
4 - M5  
6 - M5

**15040**  
STRAIGHT HOSE ADAPTOR



2 - 2	4 - 4
3 - 2	6 - 4
3 - 3	6 - 6
4 - 3	

**15130**  
ELBOW HOSE ADAPTOR



2  
3  
4  
6

**15230**  
TEE HOSE ADAPTOR



2  
3  
4  
6

# Serie Tubes

PLASTIC TUBES



## Materials

- POLYAMIDE
- POLYURETHANE 98 SHORE A
- PTFE
- FEP
- PVC
- NBR/PVC

## Standard colours

	<b>NT</b>	WHITE TRANSLUCENT
	<b>AZ</b>	LIGHT BLUE
	<b>BL</b>	BLUE
	<b>NE</b>	BLACK
	<b>TT</b>	TRANSLUCENT
	<b>GI</b>	YELLOW
	<b>GR</b>	GREY
	<b>RO</b>	RED
	<b>VE</b>	GREEN



## Reference Standard

1907/2006  
REACH ✓

2011/65/CE  
RoHS ✓

97/23/CE  
(PED)

SILICON  
FREE

## POLYAMIDE TUBES



## TB12

POLYAMIDE TUBE

									∅ Ext.	∅ Int.
TB12 00 427	NT	AZ	NE	GI	GR	RO	VE		4	2.7
TB12 00 530	NT	AZ	NE	-	-	-	-		5	3
TB12 00 640	NT	AZ	NE	GI	GR	RO	VE		6	4
TB12 00 860	NT	AZ	NE	GI	GR	RO	VE		8	6
TB12 01 075	NT	-	NE	-	-	-	-		10	7.5
TB12 01 080	NT	AZ	NE	GI	GR	RO	VE		10	8
TB12 12 100	NT	AZ	NE	-	-	-	-		12	10
TB12 14 120	NT	AZ	NE	-	-	-	-		14	12
TB12 15 125	NT	AZ	NE	-	-	-	-		15	12.5

## POLYAMIDE TUBE INCHES DIMENSIONS

		∅ Ext.	∅ Int.
TB12 31 721	NE	1/8 (3.17)	2.18
TB12 63 543	NE	1/4 (6.35)	4.35
TB12 95 271	NE	3/8 (9.52)	7.14
TB12 12 795	NE	1/2 (12.7)	9.52

## TS12

POLYAMIDE TUBE - LENGHT 25 MT

									∅ Ext.	∅ Int.
TS12 00 427	NT	AZ	NE	GI	GR	RO	VE		4	2.7
TS12 00 640	NT	AZ	NE	GI	GR	RO	VE		6	4
TS12 00 860	NT	AZ	NE	GI	GR	RO	VE		8	6
TS12 01 080	NT	AZ	NE	-	-	-	-		10	8
TS12 12 100	NT	AZ	NE	-	-	-	-		12	10



## Temperatures

- 40 °C  
+ 100 °C

Table of pressure values expressed in% as a function of temperature.

20°	40°	60°	80°	100°
100%	85%	60%	40%	20%

## TB12A

PA SELF-EXTINGUISHING TUBE

**New**

UL 94 V2

		∅ Ext.	∅ Int.
TB12A 00 427	AZ	4	2.7
TB12A 00 640	AZ	6	4
TB12A 00 860	AZ	8	6
TB12A 01 080	AZ	10	8
TB12A 12 100	AZ	12	10
TB12A 15 125	AZ	15	12.5



## Temperatures

- 30 °C  
+ 70 °C

Table of pressure values expressed in% as a function of temperature.

20°	30°	40°	50°	60°
100%	72%	64%	52%	47%



**TB12X**  
PA MULTILAYER ANTISTATIC TUBE

New

ATEX II 2 G/D

			∅ Ext.	∅ Int.
TB12X 00 425	NE	■	4	2.5
TB12X 00 640	NE		6	4
TB12X 00 860	NE		8	6
TB12X 01 080	NE		10	8
TB12X 12 100	NE		12	10

**Temperatures**  
- 30 °C  
+ 80 °C

Table of pressure values expressed in% as a function of temperature.

20°	40°	60°	80°
100%	85%	60%	40%

**TB12P**  
PA TUBE WITH PU LAYER – FIREPROOF ANTI-SPARK

New

UL 94 V0

			∅ Ext.	∅ Int.
TB12P 00 420	NE	■	4	2
TB12P 00 640	NE		6	4
TB12P 00 860	NE		8	6
TB12P 01 075	NE		10	7.5
TB12P 01 290	NE		12	9

**Temperatures**  
- 40 °C  
+ 80 °C

Table of pressure values expressed in% as a function of temperature.

20°	40°	60°	80°
100%	85%	60%	40%

**98 SHORE A  
POLYURETHANE POLYESTER TUBE**

**TBPU**  
98 SHORE A POLYURETHANE POLYESTER TUBE

							∅ Ext.	∅ Int.
TBPU 00 425	NT	AZ	NE	-	RO	TT	4	2.5
TBPU 00 530	NT	AZ	NE	-	-	-	5	3
TBPU 00 640	NT	AZ	NE	GI	RO	TT	6	4
TBPU 00 855	NT	AZ	NE	-	RO	TT	8	5.5
TBPU 00 860	NT	AZ	NE	-	RO	TT	8	6
TBPU 01 080	NT	AZ	NE	-	RO	TT	10	8
TBPU 01 290	NT	AZ	NE	-	RO	TT	12	9

**TSPU**  
98 SHORE POLYURETHANE POLYESTER TUBE - LENGHT 25 MT

				∅ Ext.	∅ Int.
TSPU 00 425	NT	AZ	NE	4	2.5
TSPU 00 640	NT	AZ	NE	6	4
TSPU 00 855	NT	AZ	NE	8	5.5
TSPU 00 860	NT	AZ	NE	8	6
TSPU 01 080	NT	AZ	NE	10	8
TSPU 01 290	NT	AZ	NE	12	9

**Temperatures**  
- 40 °C  
+ 60 °C

Table of pressure values expressed in% as a function of temperature.

-20°	0°	20°	30°	40°	50°	60°
185%	140%	100%	85%	70%	60%	50%

**TB66**  
POLYAMIDE SEMIRIGID TUBE

New

serie 58000

			∅ Ext.	∅ Int.
TB66 00 420	NT	□	4	2
TB66 00 630	NT		6	3

**Temperatures**  
0 °C  
+ 100 °C

Table of pressure values expressed in% as a function of temperature.

20°	30°	40°	50°	60°	70°	80°
100%	83%	72%	64%	58%	52%	47%

**90 SHORE A  
POLYURETHANE POLYETHER TUBE**

**TBPO**  
90 SHORE A POLYURETHANE POLYETHER TUBE

								∅ Ext.	∅ Int.
TBPO 00 425	NT	AZ	NE	GI	GR	RO	VE	4	2.5
TBPO 00 640	NT	AZ	NE	GI	GR	RO	VE	6	4
TBPO 00 855	NT	AZ	NE	GI	GR	RO	VE	8	5.5
TBPO 01 070	NT	AZ	NE	-	GR	RO	-	10	7
TBPO 01 280	NT	AZ	NE	-	GR	RO	-	12	8
TBPO 14 100	NT	AZ	NE	GI	-	RO	-	14	10

**TSPO**  
90 SHORE A POLYURETHANE POLYETHER TUBE - LENGHT 25 MT

								∅ Ext.	∅ Int.
TSPO 00 425	NT	AZ	NE	GI	GR	RO	VE	4	2.5
TSPO 00 640	NT	AZ	NE	GI	GR	RO	VE	6	4
TSPO 00 855	NT	AZ	NE	GI	GR	RO	VE	8	5.5
TSPO 01 070	NT	AZ	NE	-	GR	RO	-	10	7
TSPO 01 280	NT	AZ	NE	-	GR	RO	-	12	8
TSPO 14 100	NT	AZ	NE	GI	-	RO	-	14	10

**Temperatures**  
- 40 °C  
+ 60 °C

Table of pressure values expressed in% as a function of temperature.

20°	30°	40°
100%	60%	40%

**FEP - PTFE TUBES**

**TBFE**

FEP TUBE



			∅ Ext.	∅ Int.
TBFE 00 425	NT	□	4	2.5
TBFE 00 640	NT		6	4
TBFE 00 860	NT		8	6
TBFE 01 080	NT		10	8
TBFE 12 100	NT		12	10

**TSFE**

FEP TUBE - LENGHT 25 MT



			∅ Ext.	∅ Int.
TSFE 00 425	NT	□	4	2.5
TSFE 00 640	NT		6	4
TSFE 00 860	NT		8	6
TSFE 01 080	NT		10	8
TSFE 12 100	NT		12	10



**Temperatures**

- 60 °C  
+ 205 °C

Table of pressure values expressed in% as a function of temperature.

20°	50°	100°	150°
100%	80%	45%	20%

**TBPF**

PTFE FLEXIBLE TUBE



			∅ Ext.	∅ Int.
TBPF 00 420	NT	□	4	2
TBPF 00 427	NT		4	2.7
TBPF 00 530	NT		5	3
TBPF 00 640	NT		6	4
TBPF 00 860	NT		8	6
TBPF 01 080	NT		10	8
TBPF 01 210	NT		12	10



**Temperatures**

- 60 °C  
+ 260 °C

Table of pressure values expressed in% as a function of temperature.

20°	50°	100°	150°	200°	250°
100%	85%	65%	50%	35%	25%

**SPIRALS**

**SS12**

POLYAMIDE SPIRAL WITHOUT TANGS



			∅ Ext.	∅ Int.	∅ Ext.
SS12 0064 030	BL	■	6	4	63
SS12 0086 030	BL		8	6	87
SS12 0108 030	BL		10	8	106
SS12 0121 030	BL		12	10	135



**Temperatures**

- 40 °C  
+ 70 °C

Table of pressure values expressed in% as a function of temperature.

-20°	0°	20°	30°	40°	50°	60°	70°
180%	140%	100%	90%	80%	70%	60%	50%

**SDPU**

SPIRAL POLYURETHANE POLYETHER 95 SHORE A WITH TANGS



Size	1	2
6 - 4	100	100
8 - 5.5	120	500
10 - 6.5	120	500
12 - 8	120	500

			∅ Ext.	∅ Int.	∅ Ext.
SDPU 0064 004	AZ	■	6	4	32
SDPU 0085 505	AZ		8	5.5	41
SDPU 0106 505	AZ		10	6.5	60
SDPU 0120 805	AZ		12	8	80
SDPU 0085 075	AZ		8	5.5	41
SDPU 0106 575	AZ		10	6.5	60
SDPU 0120 875	AZ		12	8	80



**Temperatures**

- 40 °C  
+ 60 °C

Table of pressure values expressed in% as a function of temperature.

-20°	0°	20°	30°	40°	50°	60°
110%	100%	100%	85%	70%	60%	50%

**PVC TUBE FOOD GRADE**

**TBPV**  
PVC TUBE FOOD GRADE







	□		∅ Ext.	∅ Int.
TBPV 01 370	NT		13	7
TBPV 16 100	NT		16	10
TBPV 23 150	NT		23	15
TBPV 26 190	NT		26	19
TBPV 33 250	NT		33	25


 **Temperatures**  
- 5 °C  
+ 60 °C

**PUSH-LOCK HOSE**


**TBPL**  
PUSH-LOCK HOSE



				∅ Int. inch	∅ Int. mm	∅ Ext. mm
TBPL1/4 OR O1 00	TBPL1/4 OB L1 00	TBPL1/4 OV E1 00	TBPL1/4 ON E1 00	1/4	6.3	12.4
TBPL3/8 OR O1 00	TBPL3/8 OB L1 00	TBPL3/8 OV E1 00	TBPL3/8 ON E1 00	3/8	9.6	15.5
TBPL1/2 OR O1 00	TBPL1/2 OB L1 00	TBPL1/2 OV E1 00	TBPL1/2 ON E1 00	1/2	12.7	18.7
TBPL5/8 OR O0 80	TBPL5/8 OB L0 80	TBPL5/8 OV E0 80	TBPL5/8 ON E0 80	5/8	16	22.9
TBPL3/4 OR O0 80	TBPL3/4 OB L0 80	TBPL3/4 OV E0 80	TBPL3/4 ON E0 80	3/4	19.2	26.5

	Temperature with compressed air	-20°C	+110°C peak +125°C
	Temperature with water	0°C	+100°C peak +110°C
	Temperature with hydraulic oil	-20°C	+70°C peak +90°C
	Temperature with Water Glycol	-20°C	+70°C peak +90°C

 **Pressures**  
**16 bar (1.6 MPa)**

-  **Fluids**
- Compressed air
  - Water
  - Hydraulic Oil
  - Water Glycol
  - Diesel Fuel
  - Petrol


**ACCESSORIES**

**NAFE**  
PTFE TAPE



12 mm x 0,1 mm x 12 Mt

**1740**  
FIXED BRACKET TUBE




10 x 4 mm	10 x 10 mm
10 x 6 mm	4 x 12 mm
10 x 8 mm	4 x 14 mm

**1750**  
TECHNOPOLYMER PIPE CUTTER



14 mm max

**1752**  
METAL CUTTER FOR PLASTIC PIPE



15 mm max  
25 mm max

**1753**  
SPARE BLADE 1752



15 mm max  
25 mm max

**1755**  
ANTI-SPARK TUBE CUTTER New



6 - 8 mm  
10 - 12 mm

# Serie Quick Couplings

## AUTOMATIC QUICK COUPLINGS



### Application

- Compressed Air & Tools
- Pneumatic & Fluidtechnology
- Food & Beverage
- Life & Sciences
- Cooling System
- Inert Gases, Vacuum



### Reference Standard

1907/2006  
REACH ✓

2011/65/CE  
RoHS ✓

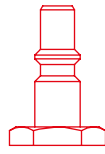
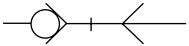
97/23/CE  
(PED)

SILICON  
FREE

**SERIE 100 UNI ISO 6150 A-6**

DN 2.5 mm

UNI ISO 6150 A-6



1:1



### Pressure

0 bar  
10 bar

Maximum static pressure (no pulsations):  
35 bar



### Fluids

- Compressed air
- For other fluids, consult the technical department Aignep.



### Temperatures

- 20 °C  
+ 80 °C

With FKM O-ring:  
- 10 °C  
+ 200 °C



### Flow Rate

NI/min

6 bar Δ 1	6 bar Δ 0.5	6 bar Δ 0 (Exhaust Free)
240	190	320

**101**  
MALE SOCKET



1/8

**102**  
FEMALE SOCKET



1/8

**104**  
COMPRESSION SOCKET



4/2,7  
6/4

**105**  
SOCKET WITH REST FOR RUBBER HOSE



4  
6

**201**  
MALE PLUG



1/8

**202**  
FEMALE PLUG



1/8

**204**  
COMPRESSION PLUG



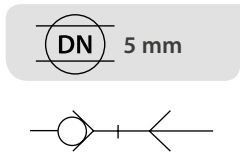
4/2,7  
6/4

**205**  
PLUG WITH REST FOR RUBBER HOSE

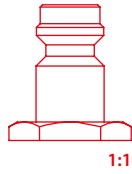


4  
6

**SERIE 110 MIGNON**



**MIGNON**



**Pressure**  
0 bar  
12 bar

**Maximum static pressure (no pulsations):**  
35 bar



**Fluids**

• Compressed air  
For other fluids, consult the technical department Aignep.



**Temperatures**  
- 20 °C  
+ 80 °C

**With FKM O-ring:**  
- 10 °C  
+ 200 °C



**Flow Rate**

**NI/min**

6 bar Δ 1	6 bar Δ 0.5	6 bar Δ 0 (Exhaust Free)
650	480	1100

**111**  
MALE SOCKET



1/8  
1/4  
3/8

**112**  
FEMALE SOCKET



1/8  
1/4  
3/8

**113**  
COMPRESSION SOCKET WITH SPRING



6/4  
8/6

**114**  
COMPRESSION SOCKET



6/4  
8/6

**115**  
SOCKET WITH REST FOR RUBBER HOSE



4  
6  
8

**116**  
BULKHEAD SOCKET WITH MALE THREADED CONNECTION



1/8  
1/4  
3/8

**117**  
BULKHEAD SOCKET WITH COMPRESSION CONNECTION WITH SPRING



6/4  
8/6

**118**  
BULKHEAD SOCKET WITH COMPRESSION CONNECTION



6/4  
8/6

**119**  
BULKHEAD SOCKET WITH SPIGOT FOR RUBBER HOSE



4  
6  
8

**111SW**  
MALE SOCKET WITHOUT SHUTTER



1/8  
1/4

**112SW**  
FEMALE SOCKET WITHOUT SHUTTER



1/8  
1/4

**211**  
MALE PLUG



1/8  
1/4  
3/8

**212**  
FEMALE PLUG



1/8  
1/4  
3/8

**213**  
COMPRESSION PLUG WITH SPRING



6/4  
8/6

**214**  
COMPRESSION PLUG



6/4  
8/6

**215**  
PLUG WITH REST FOR RUBBER HOSE

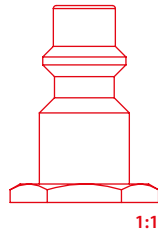
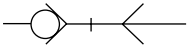


4  
6  
8

**SERIE 120 UNI ISO 6150 B-12**

**DN** 5.5 mm

**UNI ISO 6150 B-12**



**Pressure**  
0 bar  
16 bar

**Maximum static pressure (no pulsations):**  
35 bar



**Fluids**

• Compressed air  
For other fluids, consult the technical department Aignep.



**Temperatures**  
- 20 °C  
+ 80 °C

**With FKM O-ring:**  
- 10 °C  
+ 200 °C



**Flow Rate**

**NI/min**

6 bar Δ 1	6 bar Δ 0.5	6 bar Δ 0 (Exhaust Free)
1100	800	1500

**121**  
MALE SOCKET



1/4  
3/8  
1/2

**122**  
FEMALE SOCKET



1/4  
3/8  
1/2

**123**  
COMPRESSION SOCKET WITH SPRING



6/4  
8/6  
10/8

**124**  
COMPRESSION SOCKET



6/4  
8/6  
10/8

**125**  
SOCKET WITH REST FOR RUBBER HOSE



6  
8  
10  
12

**126**  
SOCKET FOR RUBBER HOSE



14/6  
17/8  
19/10

**221**  
MALE PLUG



1/4  
3/8  
1/2

**221AC** **HARDENED STEEL**  
STEEL MALE PLUG



1/4  
3/8  
1/2

**222**  
FEMALE PLUG



1/4  
3/8  
1/2

**222AC** **HARDENED STEEL**  
STEEL FEMALE PLUG



1/4  
3/8  
1/2

**223**  
COMPRESSION PLUG WITH SPRING



6/4  
8/6  
10/8  
12/10

**224**  
COMPRESSION PLUG



6/4  
8/6  
10/8  
12/10

**225**  
PLUG WITH REST FOR RUBBER HOSE



6  
8  
10  
12

**225AC** **HARDENED STEEL**  
STEEL PLUG WITH REST FOR RUBBER HOSE



6  
8  
10  
12

**227**  
BAYONET PLUG



15

**228**  
PLUG WITH GRADUAL EXHAUST

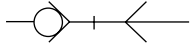
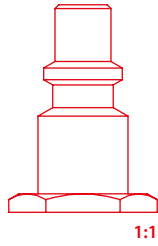


1/4

**SERIE 120 ITALIAN PROFILE**

**DN** 5 mm

**ITALIAN**



**Pressure**

**0 bar**  
**16 bar**

**Maximum static pressure (no pulsations):**  
**35 bar**



**Fluids**

• Compressed air  
For other fluids, consult the technical department Aignep.



**Temperatures**

**- 20 °C**  
**+ 80 °C**

**With FKM O-ring:**  
**- 10 °C**  
**+ 200 °C**



**Flow Rate**

**NI/min**

6 bar Δ 1	6 bar Δ 0.5	6 bar Δ 0 (Exhaust Free)
1100	800	1500

**121**  
MALE SOCKET



1/4  
3/8  
1/2

**122**  
FEMALE SOCKET



1/4  
3/8  
1/2

**123**  
COMPRESSION SOCKET WITH SPRING



6/4  
8/6  
10/8

**124**  
COMPRESSION SOCKET



6/4  
8/6  
10/8

**125**  
SOCKET WITH REST FOR RUBBER HOSE



6  
8  
10  
12

**126**  
SOCKET FOR RUBBER HOSE



14/6  
17/8  
19/10

**251**  
MALE PLUG



1/4  
3/8  
1/2

**251AC** **HARDENED STEEL**  
STEEL MALE PLUG



1/4  
3/8  
1/2

**252**  
FEMALE PLUG



1/4  
3/8  
1/2

**252AC** **HARDENED STEEL**  
STEEL FEMALE PLUG



1/4  
3/8  
1/2

**253**  
COMPRESSION PLUG WITH SPRING



6/4  
8/6  
10/8  
12/10

**254**  
COMPRESSION PLUG



6/4  
8/6  
10/8  
12/10

**255**  
PLUG WITH REST FOR RUBBER HOSE



6  
8  
10  
12

**255AC** **HARDENED STEEL**  
STEEL PLUG WITH REST FOR RUBBER HOSE



6  
8  
10  
12

**256**  
PLUG FOR RUBBER HOSE



14/6  
17/8  
19/10

**257**  
BAYONET PLUG



15

**258**  
PLUG WITH GRADUAL EXHAUST

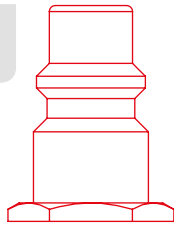
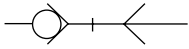


1/4

**SERIE 130 UNI ISO 6150 B-15**

**DN** 9 mm

**UNI ISO 6150 B-15**



1:1



**Pressure**  
0 bar  
16 bar

**Maximum static pressure (no pulsations):**  
35 bar



**Fluids**

• Compressed air  
For other fluids, consult the technical department Aignep.



**Temperatures**  
- 20 °C  
+ 80 °C

**With FKM O-ring:**  
- 10 °C  
+ 200 °C



**Flow Rate**

**NI/min**

6 bar Δ 1	6 bar Δ 0.5	6 bar Δ 0 (Exhaust Free)
2500	2050	3300

**131**  
MALE SOCKET



3/8  
1/2

**132**  
FEMALE SOCKET



3/8  
1/2

**133**  
COMPRESSION SOCKET WITH SPRING



10/8  
12/10

**134**  
COMPRESSION SOCKET



10/8  
12/10

**135**  
SOCKET WITH REST FOR RUBBER HOSE



8  
10  
12

**231**  
MALE PLUG



3/8  
1/2

**232**  
FEMALE PLUG



3/8  
1/2

**233**  
COMPRESSION PLUG WITH SPRING



10/8  
12/10

**234**  
COMPRESSION PLUG



10/8  
12/10

**235**  
PLUG WITH REST FOR RUBBER HOSE



8  
10  
12

**237**  
BAYONET PLUG



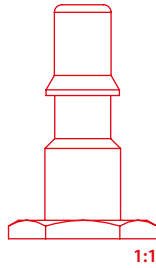
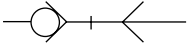
15



**SERIE 140 UNI ISO 6150 C-10**

**DN** 5.5 mm

**UNI ISO 6150 C-10**



1:1



**Pressure**  
0 bar  
25 bar

**Maximum static pressure (no pulsations):**  
35 bar



**Fluids**

• Compressed air  
For other fluids, consult the technical department Aignep.



**Temperatures**  
- 20 °C  
+ 80 °C

**With FKM O-ring:**  
- 10 °C  
+ 200 °C



**Flow Rate**

**NI/min**

6 bar Δ 1	6 bar Δ 0.5	6 bar Δ 0 (Exhaust Free)
1160	900	1550

**141**  
MALE SOCKET



1/4  
3/8  
1/2

**142**  
FEMALE SOCKET



1/4  
3/8  
1/2

**143**  
COMPRESSION SOCKET WITH SPRING



6/4  
8/6  
10/8

**144**  
COMPRESSION SOCKET



6/4  
8/6  
10/8

**145**  
SOCKET WITH REST FOR RUBBER HOSE



6  
8  
10  
12

**241**  
MALE PLUG



1/4  
3/8  
1/2

**241AC** **HARDENED STEEL**  
STEEL MALE PLUG



1/4

**242**  
FEMALE PLUG



1/4  
3/8  
1/2

**242AC** **HARDENED STEEL**  
STEEL FEMALE PLUG



1/4

**243**  
COMPRESSION PLUG WITH SPRING



6/4  
8/6  
10/8

**244**  
COMPRESSION PLUG



6/4  
8/6  
10/8

**245**  
PLUG WITH REST FOR RUBBER HOSE



6  
8  
10  
12

**247**  
BAYONET PLUG



15

**248**  
PLUG WITH GRADUAL EXHAUST

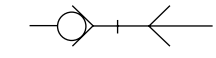
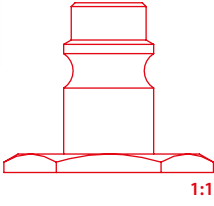


1/4

**SERIE 160 EUROPEAN PROFILE**

**DN** 7.5-7.8 mm

**EUROPEAN**



**Pressure**  
**0 bar**  
**16 bar**  
**Maximum static pressure (no pulsations):**  
**35 bar**



**Fluids**  
 • Compressed air  
 For other fluids, consult the technical department Aignep.



**Temperatures**  
**- 20 °C**  
**+ 80 °C**  
**With FKM O-ring:**  
**- 10 °C**  
**+ 200 °C**



**Flow Rate** **NI/min**

DN	6 bar Δ 1	6 bar Δ 0.5	6 bar Δ 0 (Exhaust Free)
7.5	1750	1100	2400
7.8	1900	1300	2450

**161**  
**MALE SOCKET**

1/4  
 3/8  
 1/2

**162**  
**FEMALE SOCKET**

1/4  
 3/8  
 1/2

**163**  
**COMPRESSION SOCKET WITH SPRING**

6/4  
 8/6  
 10/8  
 12/10

**164**  
**COMPRESSION SOCKET**

6/4  
 8/6  
 10/8  
 12/10

**165**  
**SOCKET WITH REST FOR RUBBER HOSE**

6  
 8  
 10  
 12

**166**  
**SOCKET FOR RUBBER HOSE**

14/6  
 17/8  
 19/10

**261**  
**MALE PLUG**

1/4  
 3/8  
 1/2

**261AC** **HARDENED STEEL**  
**STEEL MALE PLUG**

1/4  
 3/8  
 1/2

**262**  
**FEMALE PLUG**

1/4  
 3/8  
 1/2

**262AC** **HARDENED STEEL**  
**STEEL FEMALE PLUG**

1/4  
 3/8  
 1/2

**263**  
**COMPRESSION PLUG WITH SPRING**

6/4  
 8/6  
 10/8  
 12/10

**264**  
**COMPRESSION PLUG**

6/4  
 8/6  
 10/8  
 12/10

**265**  
**PLUG WITH REST FOR RUBBER HOSE**

6  
 8  
 10  
 12

**265AC** **HARDENED STEEL**  
**STEEL PLUG WITH REST FOR RUBBER HOSE**

6  
 8  
 10  
 12

**266**  
**PLUG FOR RUBBER HOSE**

14/6  
 17/8  
 19/10

**267**  
**BAYONET PLUG**

15

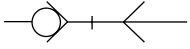
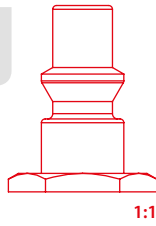
**268**  
**PLUG WITH GRADUAL EXHAUST**

1/4

**SERIE 170 SWISS PROFILE**

**DN** 5.5 mm

**SWISS**



**Pressure**  
0 bar  
16 bar

**Maximum static pressure (no pulsations):**  
35 bar



**Fluids**

• Compressed air  
For other fluids, consult the technical department Aignep.



**Temperatures**  
- 20 °C  
+ 80 °C

**With FKM O-ring:**  
- 10 °C  
+ 200 °C



**Flow Rate**

**NI/min**

6 bar Δ 1	6 bar Δ 0.5	6 bar Δ 0 (Exhaust Free)
1300	1000	1650

**171**  
MALE SOCKET



1/4  
3/8  
1/2

**172**  
FEMALE SOCKET



1/4  
3/8  
1/2

**271**  
MALE PLUG



1/4  
3/8  
1/2

**271AC**  
STEEL MALE PLUG

**HARDENED STEEL**



1/4  
3/8  
1/2

**272**  
FEMALE PLUG



1/4  
3/8  
1/2

**272AC**  
STEEL FEMALE PLUG

**HARDENED STEEL**



1/4  
3/8  
1/2

**273**  
COMPRESSION PLUG WITH SPRING



6/4  
8/6  
10/8  
12/10

**274**  
COMPRESSION PLUG



6/4  
8/6  
10/8  
12/10

**275**  
PLUG WITH REST FOR RUBBER HOSE



6  
8  
10  
12

**275AC**  
STEEL PLUG WITH REST FOR RUBBER HOSE

**HARDENED STEEL**



6  
8  
10  
12

**277**  
BAYONET PLUG



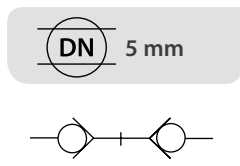
15

**278**  
PLUG WITH GRADUAL EXHAUST

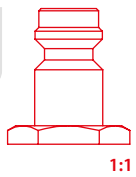


1/4

**SERIE 180 MIGNON PROFILE - AUTOMATIC QUICK COUPLINGS WITH DOUBLE SHUT-OFF**



**MIGNON**



**Pressure**  
0 bar  
12 bar

**Maximum static pressure (no pulsations):**  
35 bar



**Fluids**

• Compressed air  
For other fluids, consult the technical department Aignep.



**Temperatures**  
- 20 °C  
+ 80 °C

**With FKM O-ring:**  
- 10 °C  
+ 200 °C



**Flow Rate**

**NI/min**

6 bar Δ 1	6 bar Δ 0.5	6 bar Δ 0 (Exhaust Free)
285	240	445

**181**  
MALE SOCKET FOR SHUTTER PLUG



1/8  
1/4  
3/8

**182**  
FEMALE SOCKET FOR SHUTTER PLUG



1/8  
1/4  
3/8

**183**  
COMPRESSION SOCKET WITH NUT AND SPRING FOR SHUTTER PLUG



6/4  
8/6

**184**  
COMPRESSION SOCKET FOR SHUTTER PLUG



6/4  
8/6

**185**  
SOCKET WITH REST FOR RUBBER HOSE FOR SHUTTER PLUG



4  
6  
8

**281**  
MALE SHUTTER PLUG



1/8  
1/4  
3/8

**282**  
FEMALE SHUTTER PLUG



1/8  
1/4  
3/8

**283**  
COMPRESSION SHUTTER PLUG WITH NUT AND SPRING



6/4  
8/6

**284**  
COMPRESSION SHUTTER PLUG



6/4  
8/6

**285**  
SHUTTER PLUG WITH REST FOR RUBBER HOSE



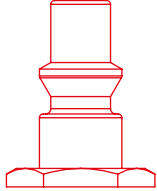
4  
6  
8

**SERIE 190 MULTISOCKET**



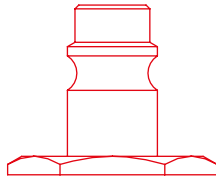
One socket for 4 different plugs

**PROFIL SWISS**  
**SERIE 270**  
DN 5.5 mm



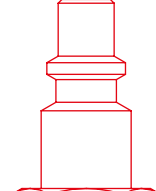
1:1

**PROFIL EUROPEAN**  
**SERIE 260**  
DN 7.5-7.8 mm



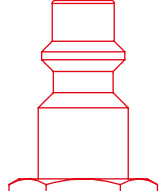
1:1

**PROFIL ITALIAN**  
**SERIE 250**  
DN 5 mm



1:1

**PROFIL UNI ISO 6150 B-12**  
**SERIE 220**  
DN 5.5 mm



1:1



Pressure

**0 bar**  
**16 bar**

**Maximum static pressure (no pulsations):**  
**35 bar**



Fluids

• Compressed air  
For other fluids, consult the technical department Aignep.



Temperatures

**- 20 °C**  
**+ 80 °C**

**With FKM O-ring:**  
**- 10 °C**  
**+ 200 °C**



Flow Rate

NI/min

DN	6 bar Δ 1	6 bar Δ 0.5	6 bar Δ 0 (Exhaust Free)
220	900	700	1450
250	800	700	1300
260	1350	1000	2150
260	1510	1200	2250
270	1100	750	1600

**191**  
MALE SOCKET



1/4  
3/8  
1/2

**192**  
FEMALE SOCKET



1/4  
3/8  
1/2

**193**  
COMPRESSION SOCKET WITH SPRING



6/4 10/8  
8/6 12/10  
10/6.5

**194**  
COMPRESSION SOCKET



6/4 10/8  
8/6 12/10

**195**  
SOCKET WITH REST FOR RUBBER HOSE



6  
8  
10  
12

**196**  
SOCKET FOR RUBBER HOSE



14/6  
17/8  
19/10

**STAINLESS STEEL MULTISOCKET**

**AIISI 316L**



Pressure

**0 bar**  
**16 bar**

**Maximum static pressure (no pulsations):**  
**35 bar**



Fluids

• Compressed air  
For other fluids, consult the technical department Aignep.



Temperatures

**- 15 °C**  
**+ 200 °C**

**63190**  
MALE SOCKET "UNIVERSAL SHORT"



1/4  
3/8  
1/2

**63192**  
FEMALE SOCKET



1/4  
3/8  
1/2

**63260**  
MALE PLUG EUROPEAN PROFILE "UNIVERSAL SHORT"



1/4  
3/8  
1/2

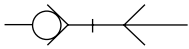
**63262**  
FEMALE PLUG EUROPEAN PROFILE



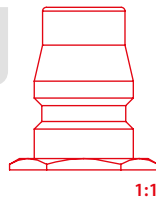
1/4  
3/8  
1/2

**SERIE 400 JAPANESE PROFILE**

**DN** 7.5 mm



**JAPANESE**



**Pressure**

**0 bar**  
**25 bar**

**Maximum static pressure (no pulsations):**  
**35 bar**



**Fluids**

• Compressed air  
For other fluids, consult the technical department Aignep.



**Flow Rate**

**NI/min**

6 bar Δ 1	6 bar Δ 0.5	6 bar Δ 0 (Exhaust Free)
1350	1050	2050



**Temperatures**

**- 20 °C**  
**+ 80 °C**

**With FKM O-ring:**  
**- 10 °C**  
**+ 200 °C**

**401**  
MALE SOCKET



1/4  
3/8  
1/2

**402**  
FEMALE SOCKET



1/4  
3/8  
1/2

**405**  
SOCKET WITH REST FOR RUBBER HOSE



8  
10  
12

**501AC**  
STEEL MALE PLUG

**HARDENED STEEL**



1/4  
3/8  
1/2

**502AC**  
STEEL FEMALE PLUG

**HARDENED STEEL**



1/4  
3/8  
1/2

**505AC**  
STEEL PLUG WITH REST FOR RUBBER HOSE

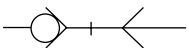
**HARDENED STEEL**



8  
10  
12

**SERIE 700 MINI - DN 2,7**

**DN** 2,7 mm



**Pressure**

**0 bar**  
**12 bar**

**Maximum static pressure (no pulsations):**  
**35 bar**



**Fluids**

• Compressed air  
For other fluids, consult the technical department Aignep.



**Flow Rate**

**NI/min**

6 bar Δ 1	6 bar Δ 0.5	6 bar Δ 0 (Exhaust Free)
235	175	295



**Temperatures**

**- 20 °C**  
**+ 80 °C**

**With FKM O-ring:**  
**- 10 °C**  
**+ 200 °C**

**701**  
MALE SOCKET



M5  
1/8

**702**  
FEMALE SOCKET



M5  
1/8

**704**  
COMPRESSION SOCKET



4/2,7  
6/4

**801**  
MALE PLUG



M5  
1/8

**802**  
FEMALE PLUG



M5  
1/8

**804**  
COMPRESSION PLUG

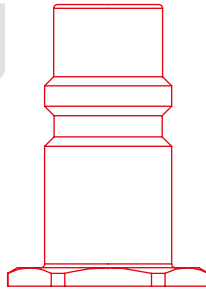


4/2,7  
6/4

**SERIE 710 UNI ISO 6150-B17**

DN 12 mm

UNI ISO 6150-B17



1:1



Pressure

0 bar  
16 bar

Maximum static pressure (no pulsations):  
35 bar



Fluids

• Compressed air  
For other fluids, consult the technical department Aignep.



Flow Rate

NI/min

6 bar Δ 1	6 bar Δ 0.5	6 bar Δ 0 (Exhaust Free)
4200	3200	4750



Temperatures

- 20 °C  
+ 80 °C

With FKM O-ring:  
- 10 °C  
+ 200 °C

**711**  
MALE SOCKET



1/2  
3/4

**712**  
FEMALE SOCKET



1/2  
3/4

**811**  
MALE PLUG



1/2  
3/4

**812**  
FEMALE PLUG



1/2  
3/4

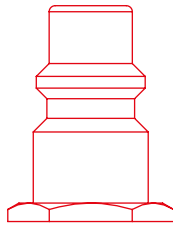
**SERIE 720 B-SOCKET UNI ISO 6150 B-15 - DN 9 / EUROPEAN - DN 10**



One socket for 2 different plugs

UNI ISO 6150 B-15

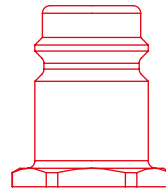
DN 9 mm



1:1

EUROPEAN DN 10

DN 10 mm



1:1



Pressure

0 bar  
16 bar

Maximum static pressure (no pulsations):  
35 bar



Fluids

• Compressed air  
For other fluids, consult the technical department Aignep.



Temperatures

- 20 °C  
+ 80 °C

With FKM O-ring:  
- 10 °C  
+ 200 °C



Flow Rate

NI/min

DN	6 bar Δ 1	6 bar Δ 0.5	6 bar Δ 0 (Exhaust Free)
9	3150	2500	3650
10	3300	2600	3800

**721**  
MALE SOCKET



3/8  
1/2

**722**  
FEMALE SOCKET



3/8  
1/2

**821**  
MALE PLUG



3/8  
1/2

**822**  
FEMALE PLUG



3/8  
1/2

**SERIE 600 - SAFETY QUICK COUPLINGS**



Plug	NI/min		
	6 bar Δ 1	6 bar Δ 0.5	6 bar Δ 0 (Exhaust Free)
220 AC	950	700	1400
250 AC	850	700	1170
260 AC	1300	1050	1830
270 AC	1000	750	1350



**Reference Standard**

- 1907/2006 REACH ✓
- 2011/65/CE RoHS ✓
- 97/23/CE (PED)
- SILICON FREE
- ISO 4414

**SUVA APPROVED**



**Temperatures**  
- 20 °C  
+ 80 °C



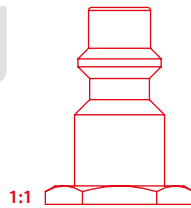
**Pressure**  
-0.99 bar (-0.099 MPa)  
15 bar (1.5 MPa)



**Fluids**  
• Compressed air

**DN 5.5 mm**

**UNI ISO 6150-B12**



**SERIE 620 UNI ISO 6150-B12**

**621**  
MALE SOCKET



1/4  
3/8  
1/2

**622**  
FEMALE SOCKET



1/4  
3/8  
1/2

**624**  
COMPRESSION SOCKET



6/4 10/8  
8/6 12/8  
10/6.5 12/10

**625**  
SOCKET WITH REST FOR RUBBER HOSE



6  
8  
10  
12

**221AC**  
STEEL MALE PLUG

**HARDENED STEEL**



1/4  
3/8  
1/2

**222AC**  
STEEL FEMALE PLUG

**HARDENED STEEL**



1/4  
3/8  
1/2

**225AC**  
STEEL PLUG WITH REST FOR RUBBER HOSE

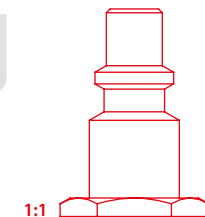
**HARDENED STEEL**



6  
8  
10  
12

**DN 5 mm**

**ITALIAN**



**SERIE 650 ITALIAN**

**651**  
MALE SOCKET



1/4  
3/8  
1/2

**652**  
FEMALE SOCKET



1/4  
3/8  
1/2

**654**  
COMPRESSION SOCKET



6/4 10/8  
8/6 12/8  
10/6.5 12/10

**655**  
SOCKET WITH REST FOR RUBBER HOSE



6  
8  
10  
12

**251AC**  
STEEL MALE PLUG

**HARDENED STEEL**



1/4  
3/8  
1/2

**252AC**  
STEEL FEMALE PLUG

**HARDENED STEEL**



1/4  
3/8  
1/2

**255AC**  
STEEL PLUG WITH REST FOR RUBBER HOSE

**HARDENED STEEL**



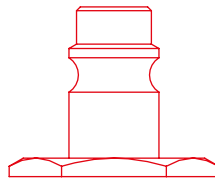
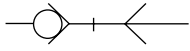
6  
8  
10  
12



**SERIE 660 EUROPEAN**

**DN** 7.8 mm

**EUROPEAN**



1:1

**661**  
MALE SOCKET



1/4  
3/8  
1/2

**662**  
FEMALE SOCKET



1/4  
3/8  
1/2

**664**  
COMPRESSION SOCKET



6/4  
8/6  
10/6.5  
10/8  
12/8  
12/10

**665**  
SOCKET WITH REST FOR RUBBER HOSE



6  
8  
10  
12

**261AC**  
STEEL MALE PLUG

**HARDENED STEEL**



1/4  
3/8  
1/2

**262AC**  
STEEL FEMALE PLUG

**HARDENED STEEL**



1/4  
3/8  
1/2

**265AC**  
STEEL PLUG WITH REST FOR RUBBER HOSE

**HARDENED STEEL**

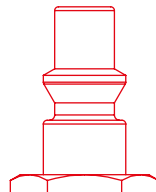
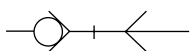


6  
8  
10  
12

**SERIE 670 SWISS**

**DN** 5.5 mm

**SWISS**



1:1

**671**  
MALE SOCKET



1/4  
3/8  
1/2

**672**  
FEMALE SOCKET



1/4  
3/8  
1/2

**674**  
COMPRESSION SOCKET



6/4  
8/6  
10/6.5  
10/8  
12/8  
12/10

**675**  
SOCKET WITH REST FOR RUBBER HOSE



6  
8  
10  
12

**271AC**  
STEEL MALE PLUG

**HARDENED STEEL**



1/4  
3/8  
1/2

**272AC**  
STEEL FEMALE PLUG

**HARDENED STEEL**



1/4  
3/8  
1/2

**275AC**  
STEEL PLUG WITH REST FOR RUBBER HOSE

**HARDENED STEEL**



6  
8  
10  
12

**628**  
EPDM SOCKET PROTECTION



6  
8  
10  
12

**SERIE 410-420 FRENCH PROFILE**



**Pressure**  
15 bar (1.5 MPa)



**Fluids**

- Water
- Cooling water
- Oil



**Temperatures**  
- 15 °C  
+ 200 °C

**With identification ring  
art. 513-523:  
+ 110 °C**

**SERIE 410 - 510 FRENCH PROFILE - DN8**

**412**  
FEMALE PLUG



1/4

**415**  
STRAIGHT PLUG WITH REST FOR RUBBER HOSE



8 3/8  
10 1/2  
12

**416**  
PLUG WITH REST FOR RUBBER HOSE TO 135°



8  
10  
12

**418**  
PLUG WITH REST FOR RUBBER HOSE TO 90°



8  
10  
12

**511**  
MALE SOCKET



1/8  
1/4  
3/8

**512**  
EXTENDED MALE SOCKET



1/8 - L=50	1/4 - L=150
1/8 - L=100	1/4 - L=200
1/8 - L=150	3/8 - L=50
1/8 - L=200	3/8 - L=100
1/4 - L=50	3/8 - L=150
1/4 - L=100	3/8 - L=200

**514** **PRE-COATING THREAD**  
MALE SOCKET TAPER



1/8  
1/4  
3/8

**513**  
IDENTIFICATION RING



BL   
RO

**SERIE 420-520 FRENCH PROFILE - DN12**

**422**  
FEMALE PLUG



1/2

**425**  
STRAIGHT PLUG WITH REST FOR RUBBER HOSE



13  
16

**521**  
MALE SOCKET



3/8  
1/2

**522** **PRE-COATING THREAD**  
MALE SOCKET TAPER



3/8  
1/2

**523**  
IDENTIFICATION RING



BL   
RO

**SERIE 430-440 INTERNATIONAL**



**Pressure**  
15 bar (1.5 MPa)



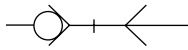
**Fluids**  
• Water  
• Cooling water  
• Oil



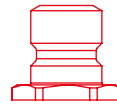
**Temperatures**  
- 15 °C  
+ 200 °C

**SERIE 430 INTERNATIONAL PROFILE - DN 6**

**DN 6 mm**



**INTERNATIONAL**



1:1

**431** **PRE-COATING THREAD**  
MALE PARALLEL SOCKET



1/4

**432**  
FEMALE SOCKET



1/4

**435**  
STRAIGHT SOCKET WITH REST FOR RUBBER HOSE



6  
9

**436**  
STRAIGHT SOCKET WITH 90° REST FOR RUBBER HOSE



6  
9

**431SW** **PRE-COATING THREAD**  
MALE PARALLEL SOCKET WITHOUT SHUTTER



1/4

**432SW**  
FEMALE SOCKET WITHOUT SHUTTER



1/4

**435SW**  
STRAIGHT SOCKET WITH REST FOR RUBBER HOSE WITHOUT SHUTTER



6  
9

**436SW**  
STRAIGHT SOCKET WITH 90° REST FOR RUBBER HOSE WITHOUT SHUTTER



6  
9

**531** **PRE-COATING THREAD**  
MALE PLUG (TAPER)



1/8  
1/4  
3/8

**532**  
FEMALE PLUG



1/8  
1/4  
3/8

**534** **PRE-COATING THREAD**  
MALE SHUTTER PLUG (TAPER)



1/4  
3/8

Use only with: 431 - 432 - 435 - 436

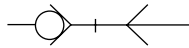
**535**  
STRAIGHT PLUG WITH REST FOR RUBBER HOSE



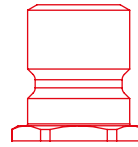
9

**SERIE 440 INTERNATIONAL PROFILE - DN9**

**DN** 9 mm



**INTERNATIONAL**



1:1

**441** **PRE-COATING THREAD**  
MALE PARALLEL SOCKET



3/8

**442**  
FEMALE SOCKET



1/4

**445**  
STRAIGHT SOCKET WITH REST FOR RUBBER HOSE



11  
13

**446**  
STRAIGHT SOCKET WITH 90° REST FOR RUBBER HOSE



11  
13

**441SW** **PRE-COATING THREAD**  
MALE PARALLEL SOCKET WITHOUT SHUTTER



3/8

**442SW**  
FEMALE SOCKET WITHOUT SHUTTER



1/4

**445SW**  
STRAIGHT SOCKET WITH REST FOR RUBBER HOSE WITHOUT SHUTTER



11  
13

**446SW**  
STRAIGHT SOCKET WITH 90° REST FOR RUBBER HOSE WITHOUT SHUTTER



11  
13

**541** **PRE-COATING THREAD**  
MALE PLUG (TAPER)



1/4  
3/8  
1/2

**542**  
FEMALE PLUG



1/4  
3/8  
1/2

**544** **PRE-COATING THREAD**  
MALE SHUTTER PLUG (TAPER)



3/8  
1/2

Use only with: 441 - 442 - 445 - 446

**545**  
STRAIGHT PLUG WITH REST FOR RUBBER HOSE



13

**SERIE 460-470 EUROPEAN**



Pressure  
15 bar (1.5 MPa)



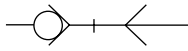
Temperatures  
- 15 °C  
+ 200 °C



Fluids  
• Water  
• Cooling water  
• Oil

**SERIE 460 EUROPEAN PROFILE - DN6**

DN 6 mm



EUROPEAN



**461** PRE-COATING THREAD  
MALE PARALLEL SOCKET



1/4

**462**  
FEMALE SOCKET



1/4

**465**  
STRAIGHT SOCKET WITH REST FOR RUBBER HOSE



6  
9

**466**  
STRAIGHT SOCKET WITH 90° REST FOR RUBBER HOSE



6  
9

**461SW** PRE-COATING THREAD  
MALE PARALLEL SOCKET WITHOUT SHUTTER



1/4

**462SW**  
FEMALE SOCKET WITHOUT SHUTTER



1/4

**465SW**  
STRAIGHT SOCKET WITH REST FOR RUBBER HOSE WITHOUT SHUTTER



6  
9

**466SW**  
STRAIGHT SOCKET WITH 90° REST FOR RUBBER HOSE WITHOUT SHUTTER



6  
9

**561** PRE-COATING THREAD  
MALE PLUG (PARALLEL)



1/8  
1/4  
3/8

**562**  
FEMALE PLUG



1/8  
1/4  
3/8

**564** PRE-COATING THREAD  
MALE SHUTTER PLUG (PARALLEL)



1/4  
3/8

Use only with: 461 - 462 - 465 - 466

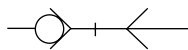
**565**  
STRAIGHT PLUG WITH REST FOR RUBBER HOSE



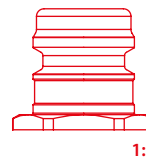
9

**SERIE 470 EUROPEAN PROFILE - DN9**

DN 9 mm



EUROPEAN



**471** PRE-COATING THREAD  
MALE PARALLEL SOCKET



3/8

**472**  
FEMALE SOCKET



1/4

**475**  
STRAIGHT SOCKET WITH REST FOR RUBBER HOSE



11  
13

**476**  
STRAIGHT SOCKET WITH 90° REST FOR RUBBER HOSE



11  
13

**471SW** **PRE-COATING THREAD**  
MALE PARALLEL SOCKET WITHOUT SHUTTER



3/8

**472SW**  
FEMALE SOCKET WITHOUT SHUTTER



1/4

**475SW**  
STRAIGHT SOCKET WITH REST FOR RUBBER HOSE WITHOUT SHUTTER



11  
13

**476SW**  
STRAIGHT SOCKET WITH 90° REST FOR RUBBER HOSE WITHOUT SHUTTER



11  
13

**571** **PRE-COATING THREAD**  
MALE PLUG (PARALLEL)



G1/4  
G3/8  
G1/2

**572**  
FEMALE PLUG



G1/4  
G3/8  
G1/2

**574** **PRE-COATING THREAD**  
MALE SHUTTER PLUG (PARALLEL)



G1/4  
G3/8  
G1/2

Use only with: 471 - 472 - 475 - 476

**575**  
STRAIGHT PLUG WITH REST FOR RUBBER HOSE



13

## SERIE 300 BLOW GUNS



Pressure

10 bar (1 MPa)



Fluids

• Compressed air



Reference Standard

1907/2006

REACH ✓

2011/65/CE

RoHS ✓

97/23/CE

(PED)

SILICON

FREE



Temperatures

- 20 °C

+ 80 °C

**321**  
BLOW GUN FEMALE CONNECTION



L=90  
L=200  
L=290

**322**  
BLOW GUN WITH PROTECTIVE AIR-SCREEN FEMALE CONNECTION



L=90  
L=200  
L=290

**325**  
BLOW GUN - PUSH-ON CONNECTION WITH SPRING



L=90 - 8/6    L=200 - 10/8  
L=90 - 10/8    L=200 - 8/6  
L=200 - 8/6    L=200 - 10/8

**326**  
BLOW GUN WITH PROTECTIVE AIR SCREEN PUSH-ON CONNECTION WITH SPRING



L=90 - 8/6    L=200 - 10/8  
L=90 - 10/8    L=200 - 8/6  
L=200 - 8/6    L=200 - 10/8

**310**  
STRAIGHT NOZZLE (SPARE PART)



L=100  
L=210  
L=300

**311**  
ELBOW NOZZLE (SPARE PART)



L=90  
L=200  
L=290

**312**  
VENTURI'S EFFECT NOZZLE (SPARE PART)



L=55 - D=17

**340**  
BLOWGUN WITH Ø 6 MM BENT PIPE FEMALE POLYMER THREAD



L=215

**341**  
BLOWGUN WITH Ø 6 MM BENT PIPE WITH METAL BUSHING



L=217

**342** **SUVA APPROVED**  
BLOWGUN WITH Ø 6 MM STAINLESS BENT PIPE SUPER SILENT



L=215

**343**  
BLOWGUN WITH Ø 8 MM BENT PIPE - 3.5 BAR



L=217



# Serie Compression Fittings

COMPRESSION FITTINGS, DOUBLE CONE FITTINGS AND UNIVERSAL FITTINGS



## Application

- Heavy Pneumatic Automation
- Automotive
- Industrial cooling
- Inert Gases, Steam
- Vacuum



## Reference Standard

1907/2006  
REACH ✓

2011/65/CE  
RoHS ✓

97/23/CE  
(PED)

SILICON  
FREE



## Component Parts and Materials

- Nickel-plated Brass Nut (Serie 9000 - 10000)
- Annealed Brass Olive
- Nickel-plated Brass Body (Serie 13000)



## Connection Tubes

Tubes made in copper, steel, iron, aluminium, brass, PA.  
 Serie 10000 PA tubes with support bush (art. 10770).



## Temperatures

- 60 °C  
+ 300 °C



## Threads

- Tapered gas in conformity with ISO7.1, BS 21, DIN 2999.
- Parallel gas in conformity with ISO 228 Class A.
- Metric in conformity with ISO R/262.



## Fluids

- Water
- Oils
- Compressed air
- Fluids in general for the hydraulic, pneumatic and oildynamic plants etc.

## SERIE 9000 COMPRESSION FITTINGS

**9200**  
TEE CONNECTOR



4	10	15
6	12	16
8	14	18

**9220**  
TEE MALE ADAPTOR - CENTRE LEG



4 - 1/8	8 - 3/8	14 - 1/2
6 - 1/8	10 - 1/4	15 - 1/2
6 - 1/4	10 - 3/8	16 - 1/2
8 - 1/8	12 - 3/8	18 - 1/2
8 - 1/4	12 - 1/2	

**9230**  
TEE MALE ADAPTOR OFF SET LEG



4 - 1/8	8 - 3/8	14 - 1/2
6 - 1/8	10 - 1/4	15 - 1/2
6 - 1/4	10 - 3/8	16 - 1/2
8 - 1/8	12 - 3/8	18 - 1/2
8 - 1/4	12 - 1/2	

**9260**  
ELBOW CONNECTOR



4	10	15
6	12	16
8	14	18

**9280**  
ELBOW MALE ADAPTOR



4 - 1/8	8 - 3/8	14 - 1/2
6 - 1/8	10 - 1/4	15 - 1/2
6 - 1/4	10 - 3/8	16 - 1/2
8 - 1/8	12 - 3/8	18 - 1/2
8 - 1/4	12 - 1/2	

**9460**  
STRAIGHT CONNECTOR



4	10	15
6	12	16
8	14	18

**9480**  
STRAIGHT MALE ADAPTOR



4 - 1/8	8 - 3/8	14 - 1/2
6 - 1/8	10 - 1/4	15 - 1/2
6 - 1/4	10 - 3/8	16 - 1/2
8 - 1/8	12 - 3/8	18 - 1/2
8 - 1/4	12 - 1/2	

**9500**  
STRAIGHT FEMALE ADAPTOR



4 - 1/8	8 - 3/8	14 - 1/2
6 - 1/8	10 - 1/4	15 - 1/2
6 - 1/4	10 - 3/8	16 - 1/2
8 - 1/8	12 - 3/8	18 - 1/2
8 - 1/4	12 - 1/2	

**9550**  
SINGLE BANJO BODY



4 - 1/8	8 - 1/8	10 - 1/4
6 - 1/8	8 - 1/4	10 - 3/8
6 - 1/4	8 - 3/8	12 - 3/8

**9680**  
NUT



4 LL	10 L	15 L
6 LL	12 L	16 S
8 LL	14 S	18 L

**9740**  
OLIVE



4 LL	10 L	15 L
6 LL	12 L	16 S
8 LL	14 S	18 L

**10770**  
INTERNAL SUPPORT BUSH



4/2.7 - 2.7	12/10 - 10	18/16 - 16
6/4 - 4	14/12 - 12	22/18 - 18
8/6 - 6	15/12.5 - 12.5	
10/8 - 8	16/13 - 13	
12/9 - 9	18/15 - 15	

**SERIE 10000 UNIVERSAL DOUBLE CONE FITTINGS**

**10200**  
TEE CONNECTOR



4	12	18
6	14	22
8	15	
10	16	

**10220**  
TEE MALE ADAPTOR CENTRE LEG



4 - 1/8	10 - 3/8	15 - 1/2
6 - 1/8	10 - 1/2	16 - 1/2
6 - 1/4	12 - 1/4	18 - 1/2
8 - 1/8	12 - 3/8	18 - 3/4
8 - 1/4	12 - 1/2	22 - 3/4
8 - 3/8	14 - 3/8	
10 - 1/4	14 - 1/2	

**10230**  
TEE MALE ADAPTOR OFF SET LEG



4 - 1/8	8 - 1/4	12 - 3/8
6 - 1/8	8 - 3/8	12 - 1/2
6 - 1/4	10 - 1/4	14 - 1/2
8 - 1/8	10 - 3/8	

**10240**  
TEE FEMALE CENTRE LEG



4 - 1/8	10 - 3/8	15 - 1/2
6 - 1/8	10 - 1/2	16 - 1/2
6 - 1/4	12 - 1/4	18 - 1/2
8 - 1/8	12 - 3/8	18 - 3/4
8 - 1/4	12 - 1/2	
10 - 1/4	14 - 1/2	

**10260**  
ELBOW CONNECTOR



4	12	18
6	14	22
8	15	
10	16	

**10280**  
ELBOW MALE ADAPTOR



4 - 1/8	10 - 3/8	15 - 1/2
6 - 1/8	10 - 1/2	16 - 1/2
6 - 1/4	12 - 1/4	18 - 1/2
8 - 1/8	12 - 3/8	18 - 3/4
8 - 1/4	12 - 1/2	22 - 3/4
8 - 3/8	14 - 3/8	
10 - 1/4	14 - 1/2	

**10290**  
ELBOW FEMALE ADAPTOR



4 - 1/8	10 - 1/4	14 - 1/2
6 - 1/8	10 - 3/8	15 - 1/2
6 - 1/4	10 - 1/2	16 - 1/2
8 - 1/8	12 - 1/4	18 - 1/2
8 - 1/4	12 - 3/8	18 - 3/4
8 - 3/8	12 - 1/2	

**10460**  
STRAIGHT CONNECTOR



4	12	18
6	14	22
8	15	
10	16	

**10465**  
STRAIGHT CONNECTOR



4	10
6	12
8	14

**10480**  
STRAIGHT MALE ADAPTOR (TAPER)



4 - 1/8	10 - 1/4	15 - 1/2
4 - 1/4	10 - 3/8	16 - 1/2
6 - 1/8	10 - 1/2	16 - 3/4
6 - 1/4	12 - 1/4	18 - 1/2
6 - 3/8	12 - 3/8	18 - 3/4
8 - 1/8	12 - 1/2	22 - 1/2
8 - 1/4	14 - 3/8	22 - 3/4
8 - 3/8	14 - 1/2	

**10485**  
STRAIGHT MALE ADAPTOR (PARALLEL)



4 - 1/8	8 - 1/4	14 - 3/8
6 - 1/8	8 - 3/8	14 - 1/2
6 - 1/4	10 - 1/4	22 - 3/4
8 - 1/8	10 - 3/8	22 - 1"

**10500**  
STRAIGHT FEMALE ADAPTOR



4 - 1/8	10 - 1/4	14 - 1/2
4 - 1/4	10 - 3/8	15 - 1/2
6 - 1/8	10 - 1/2	16 - 1/2
6 - 1/4	12 - 1/4	16 - 3/4
8 - 1/8	12 - 3/8	18 - 1/2
8 - 1/4	12 - 1/2	18 - 3/4
8 - 3/8	14 - 3/8	22 - 3/4

**10510**  
EQUAL CROSS



4	10
6	12
8	14

**13530**  
ORIENTING MALE ADAPTOR PARALLEL



6 - 1/8	8 - 1/4	10 - 3/8
6 - 1/4	8 - 3/8	14 - 3/8
8 - 1/8	10 - 1/4	14 - 1/2

**13540**  
SLEEVE HOSE ADAPTER FOR CAOUTCHOU TUBES



6 - 7 - 9	10 - 7 - 9	12 - 13 - 15.5
8 - 7 - 9	10 - 10 - 12	14 - 13 - 15.5
8 - 10 - 12	12 - 10 - 12	

**10550**  
STRAIGHT MALE ADAPTOR WITH OR (PARALLEL)



4 - 1/8	8 - 1/4	14 - 1/4
6 - 1/8	8 - 3/8	14 - 3/8
6 - 1/4	10 - 1/4	14 - 1/2
8 - 1/8	10 - 3/8	22 - 3/4



**10680**

NUT



4	12	18
6	14	22
8	15	
10	16	

**10740**

BRASS OLIVE



4	12	18
6	14	22
8	15	
10	16	

**10760**

PTFE OLIVE



4	12	18
6	14	22
8	15	
10	16	

**10770**

INTERNAL SUPPORT BUSH



4/2.7 - 2.7	12/10 - 10	18/16 - 16
6/4 - 4	14/12 - 12	22/18 - 18
8/6 - 6	15/12.5 - 12.5	
10/8 - 8	16/13 - 13	
12/9 - 9	18/15 - 15	

**13780**

PLUG FOR UNIVERSAL FITTINGS



4	12	18
6	14	22
8	15	
10	16	

**1612**

STEEL AND NBR BIMATERIAL WASHER



1/8	1/2
1/4	3/4
3/8	1"

**1613**

STEEL AND NBR CENTERING BIMATERIAL WASHER



1/8	1/2
1/4	3/4
3/8	1"

**SERIE 13000 UNIVERSAL FITTINGS**

**13200**

TEE CONNECTOR



4	12	18
6	14	22
8	15	
10	16	

**13220**

TEE MALE ADAPTOR CENTRE LEG



4 - 1/8	10 - 3/8	15 - 1/2
6 - 1/8	10 - 1/2	16 - 1/2
6 - 1/4	12 - 1/4	18 - 1/2
8 - 1/8	12 - 3/8	18 - 3/4
8 - 1/4	12 - 1/2	22 - 3/4
8 - 3/8	14 - 3/8	
10 - 1/4	14 - 1/2	

**13230**

TEE MALE ADAPTOR OFF SET LEG



4 - 1/8	8 - 1/4	12 - 3/8
6 - 1/8	8 - 3/8	12 - 1/2
6 - 1/4	10 - 1/4	14 - 1/2
8 - 1/8	10 - 3/8	

**13240**

TEE FEMALE CENTRE LEG



4 - 1/8	10 - 3/8	15 - 1/2
6 - 1/8	10 - 1/2	16 - 1/2
6 - 1/4	12 - 1/4	18 - 1/2
8 - 1/8	12 - 3/8	18 - 3/4
8 - 1/4	12 - 1/2	
10 - 1/4	14 - 1/2	

**13260**

ELBOW CONNECTOR



4	12	18
6	14	22
8	15	
10	16	

**13280**

ELBOW MALE ADAPTOR



4 - 1/8	10 - 3/8	15 - 1/2
6 - 1/8	10 - 1/2	16 - 1/2
6 - 1/4	12 - 1/4	18 - 1/2
8 - 1/8	12 - 3/8	18 - 3/4
8 - 1/4	12 - 1/2	22 - 3/4
8 - 3/8	14 - 3/8	
10 - 1/4	14 - 1/2	

**13290**

ELBOW FEMALE ADAPTOR



4 - 1/8	10 - 1/4	14 - 1/2
6 - 1/8	10 - 3/8	15 - 1/2
6 - 1/4	10 - 1/2	16 - 1/2
8 - 1/8	12 - 1/4	18 - 1/2
8 - 1/4	12 - 3/8	18 - 3/4
8 - 3/8	12 - 1/2	

**13300**

ORIENTING ELBOW MALE ADAPTOR New



4 - 1/8	8 - 3/8	18 - 1/2
4 - 1/4	10 - 1/4	18 - 3/4
6 - 1/8	10 - 3/8	22 - 3/4
6 - 1/4	10 - 1/2	22 - 1"
8 - 1/8	14 - 3/8	
8 - 1/4	14 - 1/2	

**13460**

STRAIGHT CONNECTOR



4	12	18
6	14	22
8	15	
10	16	

**13465**

BULKHEAD CONNECTOR



4	10
6	12
8	14

**13480**

STRAIGHT MALE ADAPTOR (TAPER)



4 - 1/8	10 - 1/4	15 - 1/2
4 - 1/4	10 - 3/8	16 - 1/2
6 - 1/8	10 - 1/2	16 - 3/4
6 - 1/4	12 - 1/4	18 - 1/2
6 - 3/8	12 - 3/8	18 - 3/4
8 - 1/8	12 - 1/2	22 - 1/2
8 - 1/4	14 - 3/8	22 - 3/4
8 - 3/8	14 - 1/2	

**13483**

STRAIGHT MALE ADAPTOR WITH OR (PARALLEL) New



4 - 1/8	10 - 3/8	15 - 1/2
6 - 1/8	12 - 1/4	16 - 3/8
6 - 1/4	12 - 3/8	16 - 1/2
8 - 1/8	12 - 1/2	18 - 1/2
8 - 1/4	14 - 3/8	18 - 3/4
8 - 3/8	14 - 1/2	22 - 3/4
10 - 1/4	15 - 3/8	22 - 1"

**13485**  
STRAIGHT MALE ADAPTOR (PARALLEL)



4 - 1/8	8 - 1/4	14 - 3/8
6 - 1/8	8 - 3/8	14 - 1/2
6 - 1/4	10 - 1/4	22 - 3/4
8 - 1/8	10 - 3/8	22 - 1"

**13500**  
STRAIGHT FEMALE ADAPTOR



4 - 1/8	10 - 1/4	14 - 1/2
4 - 1/4	10 - 3/8	15 - 1/2
6 - 1/8	10 - 1/2	16 - 1/2
6 - 1/4	12 - 1/4	16 - 3/4
8 - 1/8	12 - 3/8	18 - 1/2
8 - 1/4	12 - 1/2	18 - 3/4
8 - 3/8	14 - 3/8	22 - 3/4

**13510**  
EQUAL CROSS



4	10
6	12
8	14

**13530**  
ORIENTING MALE ADAPTOR PARALLEL



6 - 1/8	8 - 1/4	10 - 3/8
6 - 1/4	8 - 3/8	14 - 3/8
8 - 1/8	10 - 1/4	14 - 1/2

**13540**  
SLEEVE HOSE ADAPTER FOR CAOUTCHOUX TUBES



6 - 7 - 9	10 - 7 - 9	12 - 13 - 15.5
8 - 7 - 9	10 - 10 - 12	14 - 13 - 15.5
8 - 10 - 12	12 - 10 - 12	

**13550**  
SINGLE BANJO BODY WITH STEM



4 - 1/8	8 - 1/4	14 - 1/4
6 - 1/8	8 - 3/8	14 - 3/8
6 - 1/4	10 - 1/4	14 - 1/2
8 - 1/8	10 - 3/8	22 - 3/4

**13550BI** New  
SINGLE BANJO BODY WITH STEM AND BIMATERIAL WASHER (1613)



4 - 1/8	10 - 1/4	14 - 1/2
6 - 1/8	10 - 3/8	15 - 3/8
6 - 1/4	12 - 1/4	15 - 1/2
8 - 1/8	12 - 3/8	16 - 1/2
8 - 1/4	14 - 1/4	18 - 1/2
8 - 3/8	14 - 3/8	22 - 3/4

**13570BI** New  
DOUBLE BANJO BODY WITH STEM AND BIMATERIAL WASHER (1619)



4 - 1/8	10 - 1/4	14 - 1/2
6 - 1/8	10 - 3/8	15 - 3/8
6 - 1/4	12 - 1/4	15 - 1/2
8 - 1/8	12 - 3/8	16 - 1/2
8 - 1/4	14 - 1/4	18 - 1/2
8 - 3/8	14 - 3/8	22 - 3/4

**13600**  
REDUCTION



4 - 6	10 - 12
6 - 8	12 - 14
8 - 10	

**13680**  
NUT



4	12	18
6	14	22
8	15	
10	16	

**13740**  
BRASS OLIVE



4	12	18
6	14	22
8	15	
10	16	

**13780**  
PLUG FOR UNIVERSAL FITTINGS



4	12	18
6	14	22
8	15	
10	16	

**10770**  
INTERNAL SUPPORT BUSH



4/2.7 - 2.7	12/10 - 10	18/16 - 16
6/4 - 4	14/12 - 12	22/18 - 18
8/6 - 6	15/12.5 - 12.5	
10/8 - 8	16/13 - 13	
12/9 - 9	18/15 - 15	

**1612**  
STEEL AND NBR BIMATERIAL WASHER



1/8	1/2
1/4	3/4
3/8	1"

**1613**  
STEEL AND NBR CENTERING BIMATERIAL WASHER



1/8	1/2
1/4	3/4
3/8	1"

**HOSE ADAPTER FOR LOCKING HOSE SELF**

**13800**  
FEMALE HOSE ADAPTER FOR LOCKING HOSE SELF



10x1 - 6 - 1/4	20x1.5 - 14 - 1/2
12X1 - 8 - 1/4	24x1.5 - 18 - 1/2
16x1.5 - 10 - 1/4	24x1.5 - 18 - 5/8
16x1.5 - 10 - 3/8	30x1.5 - 22 - 3/4
20x1.5 - 14 - 3/8	

**13810**  
MALE HOSE ADAPTER FOR LOCKING HOSE SELF



G 1/8 - 1/4	G 1/2 - 1/2
G 1/4 - 1/4	G 1/2 - 5/8
G 1/4 - 3/8	G 3/4 - 5/8
G 3/8 - 3/8	G 3/4 - 3/4
G 3/8 - 1/2	

**13820**  
NIPPLE



10x1 - 6 - 1/8	16x1,5 - 10 - 1/2
10x1 - 6 - 1/4	20x1,5 - 14 - 3/8
10x1 - 6 - 3/8	20x1,5 - 14 - 1/2
12x1 - 8 - 1/8	24x1,5 - 18 - 1/2
12x1 - 8 - 1/4	24x1,5 - 18 - 3/4
12x1 - 8 - 3/8	30x1,5 - 22 - 3/4
16x1,5 - 10 - 1/4	30x1,5 - 22 - 1/2
16x1,5 - 10 - 3/8	





AIGNEP SPA  
Via Don G. Bazzoli - 34  
25070 Bione (BS)  
ITALY

T: +39 0365896626  
F: +39 0365896561

[aignep.it@aignep.com](mailto:aignep.it@aignep.com)



AIGNEP IBERICA SA  
Pol. Ind. el Tortuguer "Can Prat"  
Naves 23 y 24 08691  
Monistrol de Montserrat - Barcelona  
SPAIN

T: +34 93 828 47 36  
F: +34 93 828 44 32

[aignep.es@aignep.com](mailto:aignep.es@aignep.com)



AIGNEP DO BRASIL COMERCIO DE  
COMPONENTS PARA AUTOMACAO LTDA  
Rua Campos Mello, 185  
Vila Mathias - 11015-011 - Santos/SP  
BRASIL

T: +55 132138-4049  
F: +55 132138-4052

[aignep.br@aignep.com](mailto:aignep.br@aignep.com)



AIGNEP USA LLC  
7121 Loblolly Pine Blvd  
Fairview, TN 37062  
U.S.A.

T: +1 615-771-6650  
F: +1 615-771-0926

[aignep.usa@aignep.com](mailto:aignep.usa@aignep.com)



AIGNEP AG  
Industriestrasse 22A  
Ch-2545 Selzach  
SWITZERLAND

T: +41 32 342 09 09  
F: +41 32 342 09 11

[aignep.ch@aignep.com](mailto:aignep.ch@aignep.com)



AIGNEP FRANCE SARL  
2, Avenue des Améthystes  
44338 Nantes Cedex 3  
FRANCE

T: +33 0272242650  
F: +33 0272242651

[aignep.fr@aignep.com](mailto:aignep.fr@aignep.com)

[www.aignep.com](http://www.aignep.com)